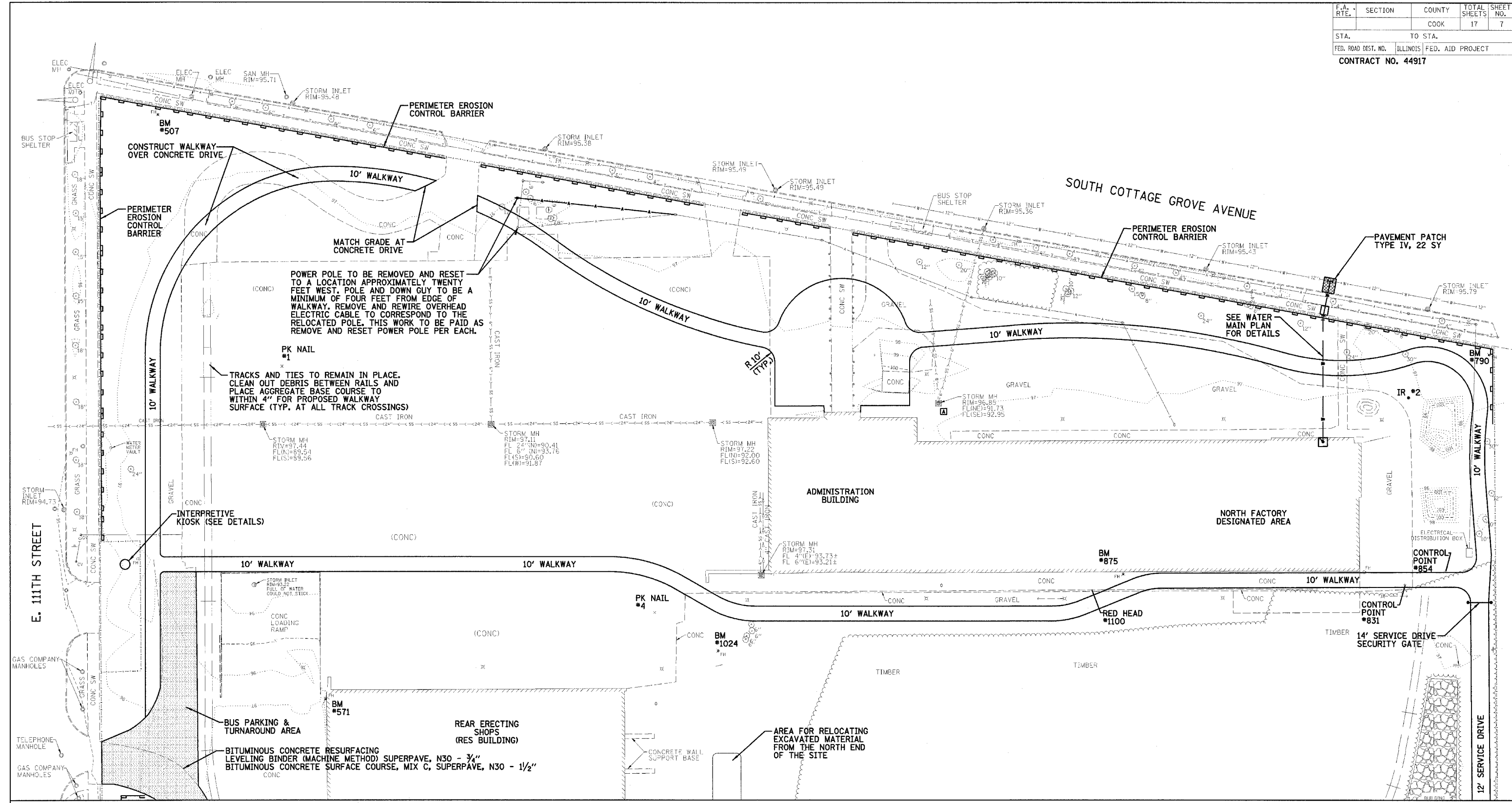
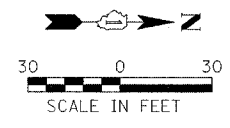


F.A. RTE.	SECTION	COUNTY	TOTAL SHEETS	SHEET NO.
		COOK	17	7
STA.	TO STA.			
FED. ROAD DIST. NO.	ILLINOIS FED. AID PROJECT			
CONTRACT NO. 44917				



MATCH LINE PLAN SHEET 7

NOTE TO THE CONTRACTOR - THE CONTRACTOR IS ADVISED THAT DURING THE SURFACE PREPARATION AND CONSTRUCTION OF PROJECT ROADWAYS AND WALKS, SUSPECTED ASBESTOS CONTAINING MATERIAL (ACM) MAY BE FOUND, UNCOVERED, AND EXPOSED BELOW GRADE. THE CONTRACTOR IS ADVISED TO CONTAIN THE SUSPECTED ACM IN ACCORDANCE WITH ALL APPLICABLE HEALTH AND SAFETY REQUIREMENTS. IF ACM IS UNCOVERED IT SHALL BE DEALT WITH IN ACCORDANCE WITH THE ASBESTOS ABATEMENT GUIDELINES PUBLISHED BY THE STATE OF ILLINOIS. IF THIS WORK BECOMES NECESSARY, IT SHALL BE PAID FOR UNDER ARTICLE 109.04 OF THE STANDARD SPECIFICATIONS FOR ROAD AND BRIDGE CONSTRUCTION.



REVISIONS	
NAME	DATE

ILLINOIS DEPARTMENT OF TRANSPORTATION
PROPOSED PLAN
 IDOT / IHPA
 PULLMAN STATE HISTORIC SITE
 SCALE: VERT. _____
 HORIZ. _____
 DATE: 11/08/05
 DRAWN BY: DJM
 CHECKED BY: PJM