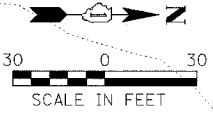
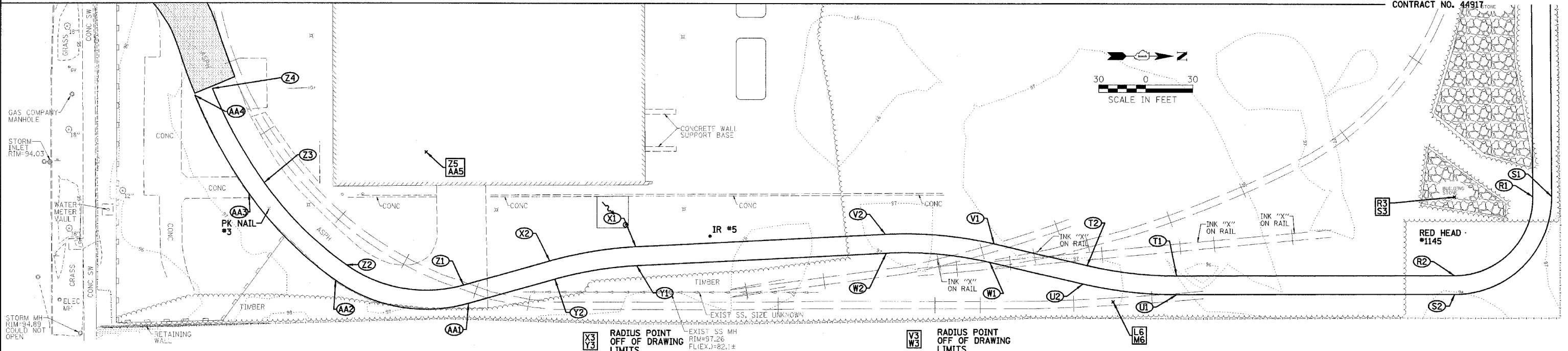


MATCH LINE PLAN SHEET 6



	DESCRIPTION	NORTHING	EASTING	RADIUS
A		9908.755	10234.855	
B		9918.755	10215.153	
C1	RPC	9918.755	10140.15	
C2	RPT	9921.254	10137.65	
C3	RADII POINT	9921.255	10140.15	2.5
D1	RPC	9921.255	10127.65	
D2	RPT	9918.755	10125.15	
D3	RADII POINT	9921.255	10125.15	2.5
E1	RPC	9918.755	10053.329	
E2	RPT	9965.302	9963.474	
E3	RADII POINT	10028.755	10053.329	110
F1	RPC	9908.755	9991.489	
F2	PPCC	10033.2634	9866.49	
F3	RPC	10102.992	9876.126	
E4	RADII POINT	10033.755	9991.489	125
E5	RADII POINT	10034.246	10116.488	250
F1	RPC	9908.755	9991.489	
F2	RPCC	10033.263	9866.49	
F3	RPT	10102.992	9876.126	
F4	RADII POINT	10033.755	9991.489	135
F5	RADII POINT	10034.246	10116.488	260
G1	RPC	10130.234	9896.519	
G2	RPCC	10176.908	9923.491	
G3	RPCC	10321.171	9987.18	
G4	RPT	10318.234	9996.991	
G5	RADII POINT	10034.246	10116.488	240
G6	RADII POINT	10390.901	9633.998	360
G7	RADII POINT	10329.224	9996.991	10
H1	RPT	10130.766	9885.872	
H2	RPCC	10182.852	9915.451	
H3	RPCC	10320.575	9976.86	
H4	RPCC	10331.975	9970.501	
H5	RPCC	10416.521	9970.578	
H6	RPT	10426.698	9977.128	
H7	RADII POINT	10034.246	10116.488	250
H8	RADII POINT	10390.901	9633.998	350
H9	RADII POINT	10322.584	9967.064	10
H10	RADII POINT	10374.234	9985.967	45
H11	RADII POINT	10425.918	9967.159	10
I1		10329.234	10026.234	
I2		10362.055	10026.457	
J1		10419.234	10026.217	
J2		10386.604	10026.354	

	DESCRIPTION	NORTHING	EASTING	RADIUS
K1	RPT	10419.234	9996.991	
K2	RPC	10428.454	9987.021	
K3	RADII POINT	10429.234	9996.991	10
L1	RPT	10489.18	9982.272	
L2	RPCC	10666.105	10000.154	
L3	RPCC	10755.635	9998.039	
L4	RPCC	10795.058	10029.96	
L5	RPT	10794.099	10081.071	
L6	RADII POINT	10528.164	10480.75	500
L7	RADII POINT	10707.488	9855.976	150
L8	RADII POINT	10765.264	10026.451	30
L9	RADII POINT	11053.273	10060.371	260
M1	RPT	10488.401	9972.303	
M2	RPCC	10668.864	9990.542	
M3	RPCC	10752.425	9988.568	
M4	RPCC	10804.989	10031.13	
M5	RPCC	10804.067	10080.275	
M6	RADII POINT	10528.164	10480.75	510
M7	RADII POINT	10707.488	9855.976	140
M8	RADII POINT	10765.264	10026.451	40
M9	RADII POINT	11053.273	10060.371	250
N1	RPC	10797.765	10126.975	
N2	RPT	10787.841	10137.771	
N3	RADII POINT	10787.797	10127.771	10
O		10807.733	10126.179	
P		10805.816	10157.976	
Q1	RPC	10783.77	10147.789	
Q2	RPT	10793.814	10157.713	
Q3	RADII POINT	10783.814	10157.789	
R1	RPC	10795.742	10413.34	
R2	RPT	10745.879	10463.717	
R3	RADII POINT	10745.744	10463.717	
S1	RPC	10807.742	10413.249	
S2	RPT	10745.911	10475.717	
S3	RADII POINT	10745.744	10413.717	62
T1	RPC	10568.718	10464.196	
T2	RPT	10511.61	10457.745	
T3	RADII POINT	10568.042	10214.197	250
U1	RPC	10568.751	10476.196	
U2	RPT	10508.901	10469.435	
U3	RADII POINT	10568.042	10214.197	262

	DESCRIPTION	NORTHING	EASTING	RADIUS
V1	RPC	10452.226	10443.985	
V2	RPT	10382.887	10437.866	
V3	RADII POINT	10395.794	10687.533	250
W1	RPC	10449.517	10455.675	
W2	RPT	10383.507	10449.85	
W3	RADII POINT	10395.794	10687.533	262
X1	RPC	10223.662	10446.098	
X2	RPT	10168.852	10455.11	
X3	RADII POINT	10236.569	10695.764	250
Y1	RPC	10224.281	10458.082	
Y2	RPT	10172.103	10466.662	238
Y3	RADII POINT	10236.569	10695.764	
Z1	RPC	10113.795	10470.603	
Z2	RPCC	10039.16	10457.749	
Z3	RPCC	9986.674	10405.329	
Z4	RPT	9953.53	10345.076	
Z5	RADII POINT	10089.959	10385.892	88
Z6	RADII POINT	10166.157	10278.107	220
Z7	RADII POINT	10233.871	10230.109	303
AA1	RPC	10117.045	10482.154	
AA2	RPCC	10032.233	10467.548	
AA3	RPCC	9976.883	10412.268	
AA4	RPT	9942.427	10349.629	
AA5	RADII POINT	10089.959	10385.892	100
AA6	RADII POINT	10166.157	10278.107	232
AA7	RADII POINT	10233.871	10230.109	315
BB1	RPC	10218.595	10137.65	
BB2	RPT	10263.337	10149.56	
BB3	RADII POINT	10218.595	10227.65	90
CC1	RPC	10218.595	10127.65	
CC2	RPT	10268.308	10140.883	
CC3	RADII POINT	10218.595	10227.65	100
DD1	RPC	10286.43	10162.791	
DD2	RPT	10316.258	10170.731	
DD3	RADII POINT	10316.258	10110.731	60

	DESCRIPTION	NORTHING	EASTING	RADIUS
EE1	RPC	10291.401	10154.114	
EE2	RPT	10316.258	10160.731	
EE3	RADII POINT	10316.258	10110.731	50
FF1	RPC	10513.914	10170.731	
FF2	RPT	10536.646	10166.258	
FF3	RADII POINT	10513.914	10110.731	60
GG1	RPC	10513.914	10160.731	
GG2	RPT	10532.858	10157.003	
GG3	RADII POINT	10513.914	10110.731	50
HH1	RPC	10572.373	10151.631	
HH2	RPT	10587.352	10148.65	
HH3	RADII POINT	10587.528	10188.649	40
II1	RPC	10568.584	10142.377	
II2	RPT	10587.308	10138.65	
II3	RADII POINT	10587.528	10188.649	50

	CONTROL DESCRIPTION	NORTHING	EASTING
1	PK NAIL	10000.020	10000.001
2	IRON ROD	10752.413	10020.798
3	PK NAIL	9989.810	10421.806
4	PK NAIL	10248.978	10165.146
5	IRON ROD	10271.111	10439.198
831	CONTROL POINT	10750.010	10146.345
854	CONTROL POINT	10777.139	10136.977
1100	RED HEAD	10541.146	10149.801
1145	RED HEAD	10752.839	10436.393

REVISIONS		ILLINOIS DEPARTMENT OF TRANSPORTATION PROPOSED STAKING & LAYOUT PLAN IDOT / IHPA PULLMAN STATE HISTORIC SITE
NAME	DATE	
		SCALE: VERT. HORIZ. DATE: 11/08/05

DRAWN BY: DJM  
CHECKED BY: PJM