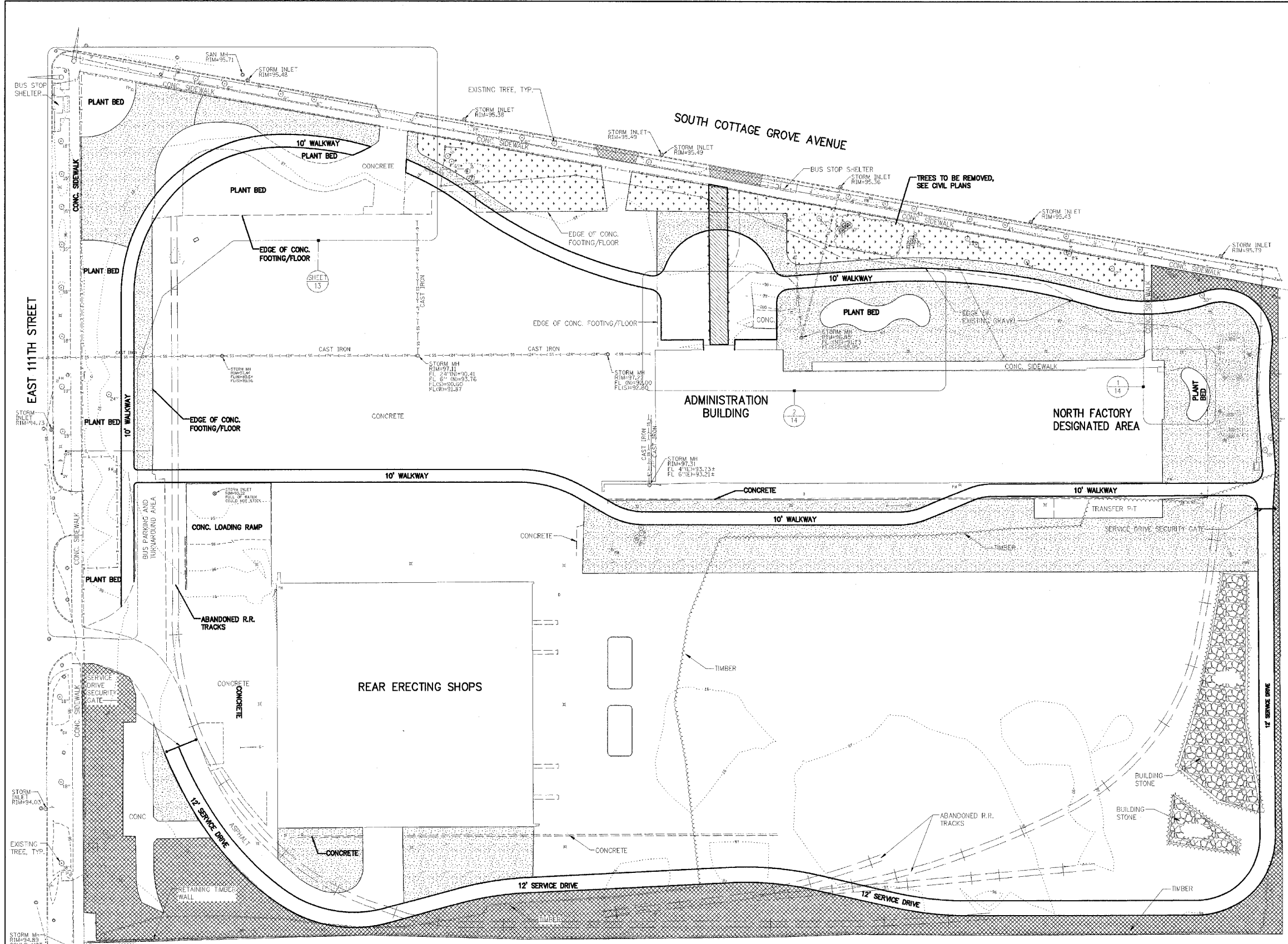


F.A. RTE.	SECTION	COUNTY	TOTAL SHEETS	SHEET NO.
		COOK	17	12
STA.		TO STA.		
FED. ROAD DIST. NO.		ILLINOIS FED. AID PROJECT		
CONTRACT NO. 44917				



- PROPOSED LEGEND**
- GENERAL LOW-MOW GRASS MIX
IDOT CLASS 1-SPECIAL (1.7 AC-72,650)
 - LOW PROFILE GRASS/FORB MIX
IDOT CLASS 5-SPECIAL (0.4 AC)
 - TALL WATERWAY GRASS MIX
IDOT CLASS 4-SPECIAL (0.9 AC)

REVISIONS		ILLINOIS DEPARTMENT OF TRANSPORTATION LAWN PLANTING PLAN IDOT / IHPA PULLMAN STATE HISTORIC SITE
NAME	DATE	
		SCALE: VERT. HORIZ. DATE: 11/08/05
DRAWN BY: DJM CHECKED BY: PJM		

