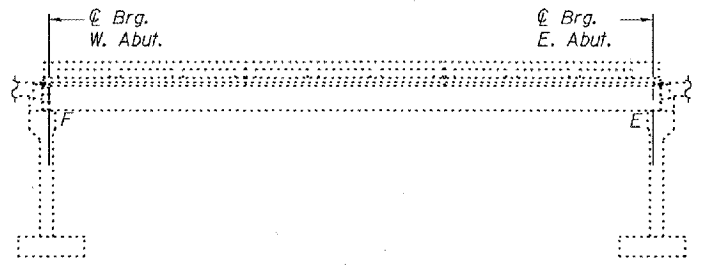


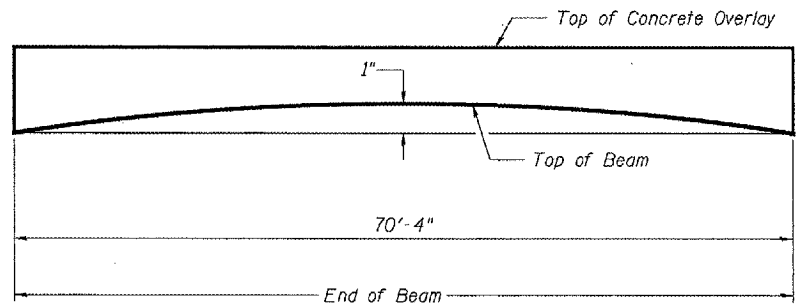
STATE OF ILLINOIS
DEPARTMENT OF TRANSPORTATION

ROUTE NO.	SECTION	COUNTY	SHEET	SHEET NO. 1
		COOK	5	5 SHEETS
FED. ROAD DIST. NO. 7	ALLIANCE	FED. AID PROJECT		

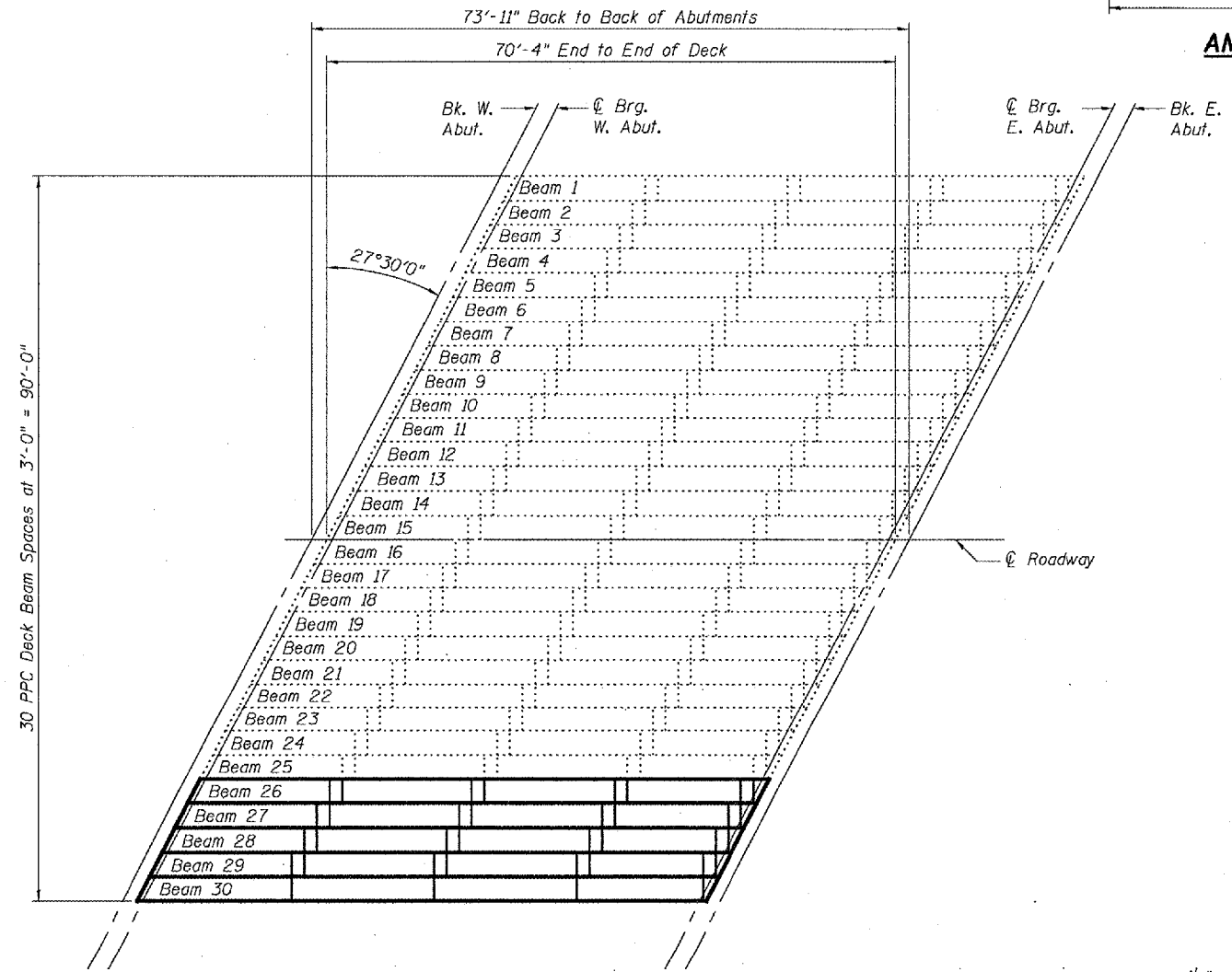
Contract Number: 60B12



ELEVATION



ANTICIPATED INITIAL CAMBER DIAGRAM



PLAN

DESIGN STRESSES
PRESTRESS UNITS

$f'_c = 5000 \text{ psi}$
 $f'_{ci} = 4000 \text{ psi}$
 $f'_s = 270000 \text{ psi}$ ($1/2 \phi$ low lax strands)
 $f'_{si} = 201960 \text{ psi}$ ($1/2 \phi$ low lax strands)

GENERAL NOTES

Plan dimensions and details relative to existing structure have been taken from existing plans and are subject to nominal construction variations. It shall be the Contractor's responsibility to verify such dimensions and details in the field and make necessary approved adjustments prior to construction or ordering of materials. Such variations shall not be cause for additional compensation for a change in the scope of the work, however, the Contractor will be paid for the quantity actually furnished at the unit price bid for the work.

Any damage done to the bridge during beam removal shall be repaired by the Contractor. Cost to be included in the cost of "Removal of Existing P.P.C. Deck Beams".

Temporary concrete barrier shall only be anchored into the overlay and not the PPC Deck Beams.

All structural steel shall be shop painted with the inorganic zinc rich primer per AASHTO M300, Type 1. Cost included with Furnishing and Erecting Structural Steel.

All construction joints shall be banded.

The cut strands at each beam end shall be given two coats of zinc dust spray or paint meeting the requirements of ASTM A780. The zinc dust spray or paint shall be applied before corrosion appears and allowed to dry according to the manufacturer's specifications prior to another coat of zinc. A concrete sealer meeting the requirements of Section 587 of the Standard Specifications shall be applied to the exterior face and 9" in on the underside of the fascia beams. The sealer shall be applied after visible crack growth has subsided. This work shall be performed by the producer and included with the cost of the beam.

Existing reinforcement extending into the removal area shall be cleaned, straightened and incorporated into the new construction. Any reinforcement bars that are damaged during concrete removal shall be replaced with an approved bar splicer or anchorage system. Cost shall be Included with Concrete Removal.

TOTAL BILL OF MATERIAL

ITEM	UNIT	QUANTITY
PPC Deck Beams (33" Depth)	Sq. Ft.	1055
* Removal of Existing PPC Deck Beams	Sq. Ft.	844
Concrete Wearing Surface	Sq. Yd.	108.8
Bicycle Railing	Foot	70
Reinforcement Bars Epoxy Coated	Pound	3600
Asbestos Bearing Pad Removal	Each	8
Concrete Superstructure	Cu. Yd.	10.8
Silicone Joint Sealer $1\frac{3}{4}$ "	Foot	102
Silicone Joint Sealer $2\frac{1}{2}$ "	Foot	102
Concrete Removal	Cu. Yd.	10.6
Mechanical Splicers	Each	71
Furnishing and Erecting Structural Steel	Pound	760

*Existing Beam 30 already removed.

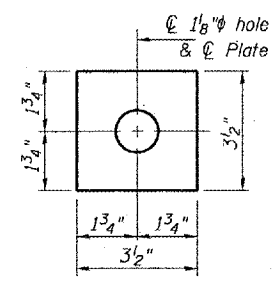
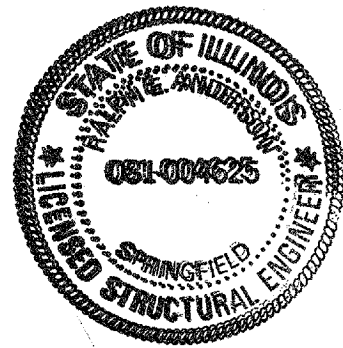
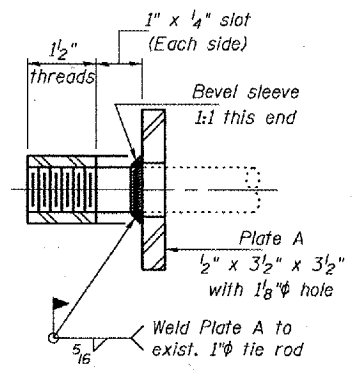
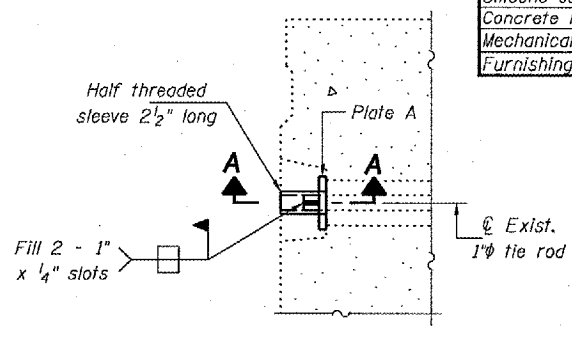


PLATE A
(4 Required)



SECTION A-A
(4 Required)



DETAIL A

DESIGNED Victor H. Veliz April 28, 2006
 CHECKED Adrian T. Holloway
 DRAWN [Signature]
 CHECKED VHV A.T.H.

EXAMINED John A. Morris
 ENGINEER OF STRUCTURAL SERVICES
 PASSED [Signature]
 ENGINEER OF BRIDGES AND STRUCTURES

Expires November 30, 2006

PLAN AND ELEVATION
 F.A.P. RT. 559/339
 COOK COUNTY
 SN 016-0349