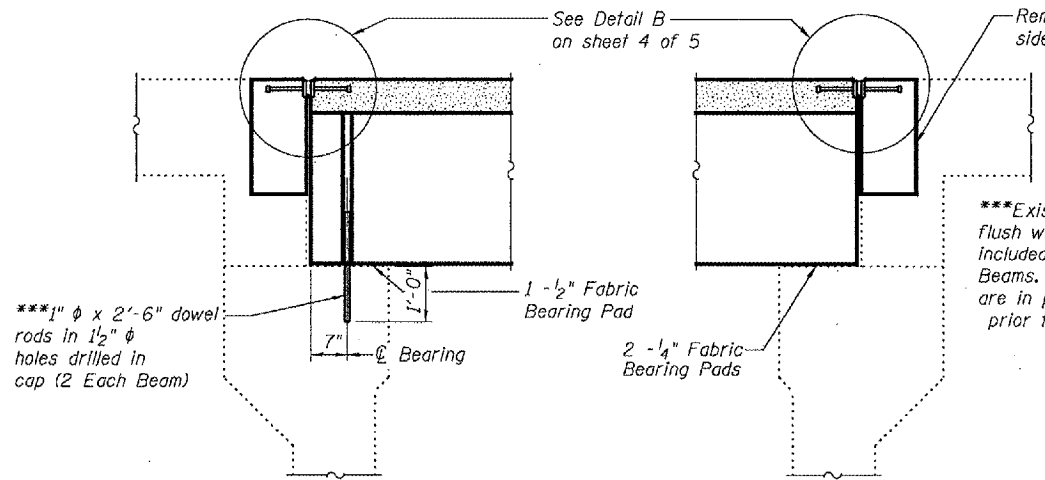


STATE OF ILLINOIS
DEPARTMENT OF TRANSPORTATION

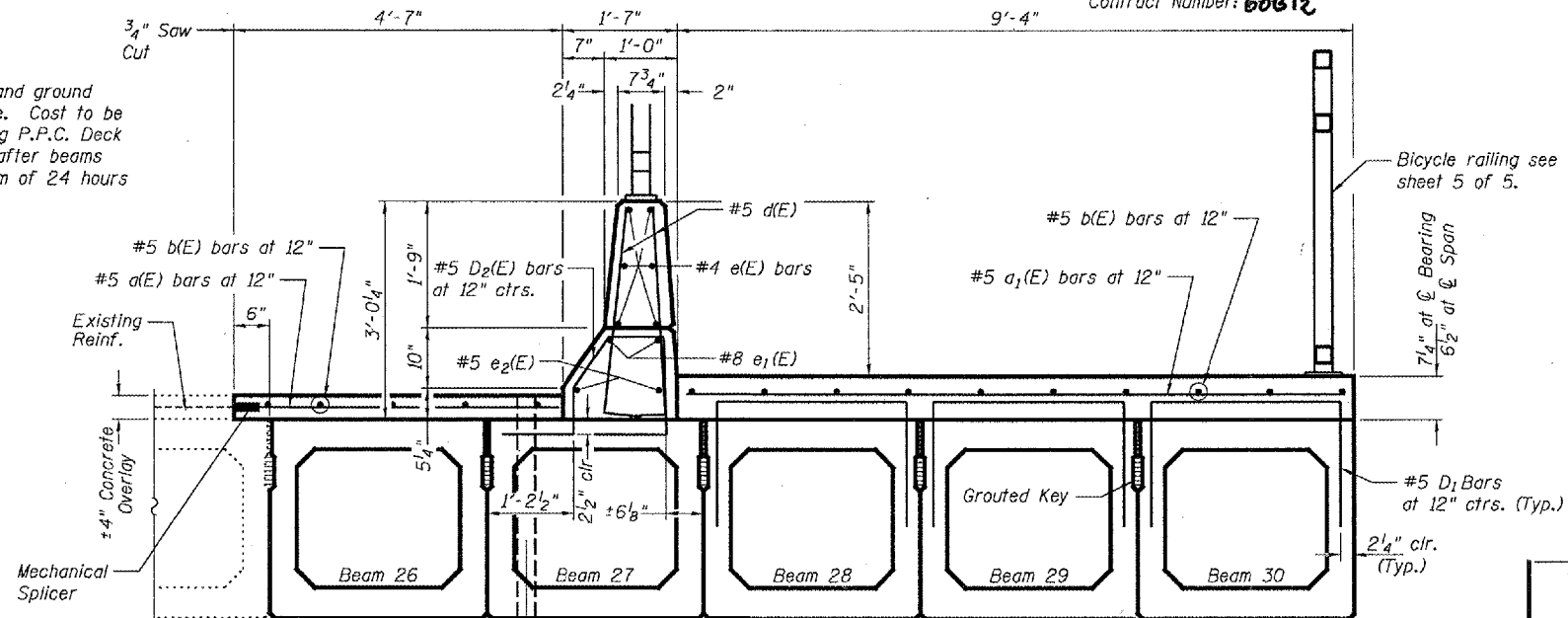
ROUTE NO.	SECTION	COUNTY	SHEET NO.	SHEET NO. 3
		Cook	7	5 SHEETS
FED. ROAD DIST. NO. 7	ILLINOIS	FED. AID PROJECT	Contract Number: 60012	



**SECTION THROUGH SIDEWALK
AT WEST ABUTMENT**
(Dims at Rt L's)

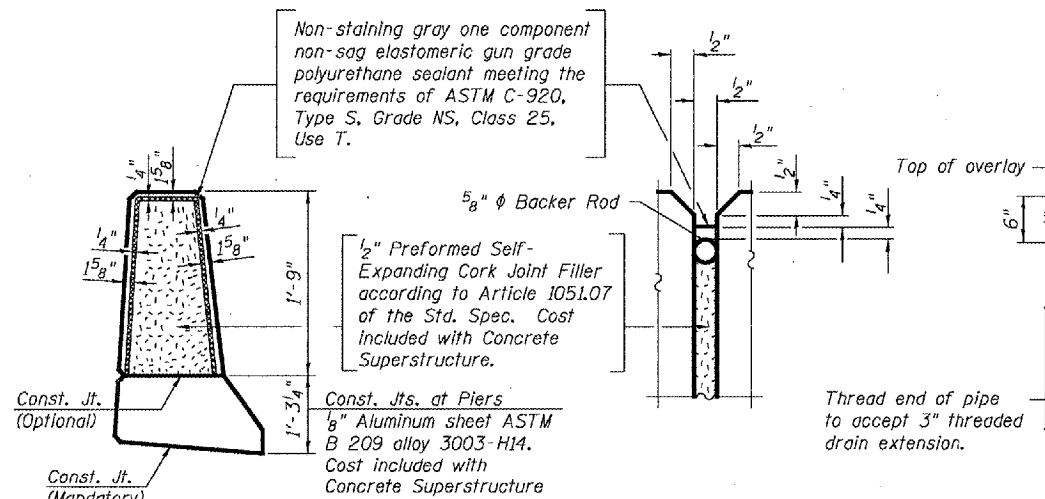
**SECTION THROUGH SIDEWALK
AT EAST ABUTMENT**
(Dims at Rt L's)

***Existing Dowel Rods shall be cut off and ground flush with the top of the existing concrete. Cast to be included in the cost of Removal of Existing P.P.C. Deck Beams. New Dowel Rods shall be grouted after beams are in place and allowed to cure a Minimum of 24 hours prior to grouting shear keys.

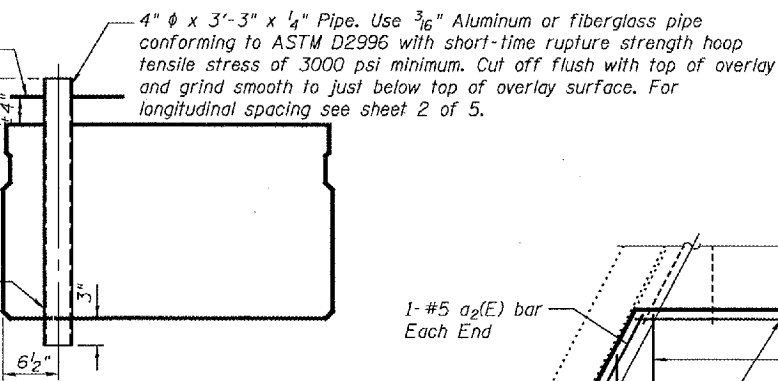


SECTION AT SOUTH SIDE OF STRUCTURE
(Looking East)

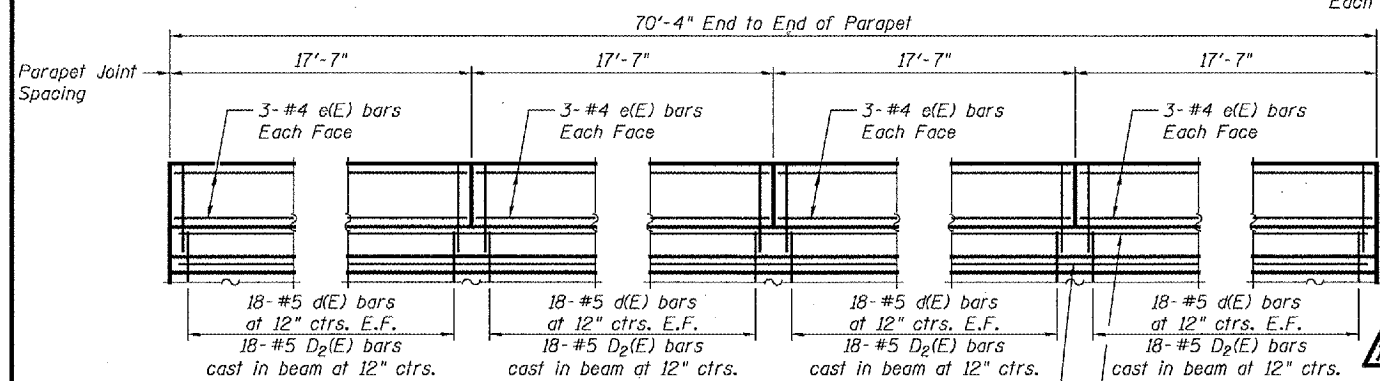
Bituminous and Concrete wearing surface to be removed is included with Removal of Existing PPC Deck Beams. Existing Parapet Removal included with Concrete Removal.



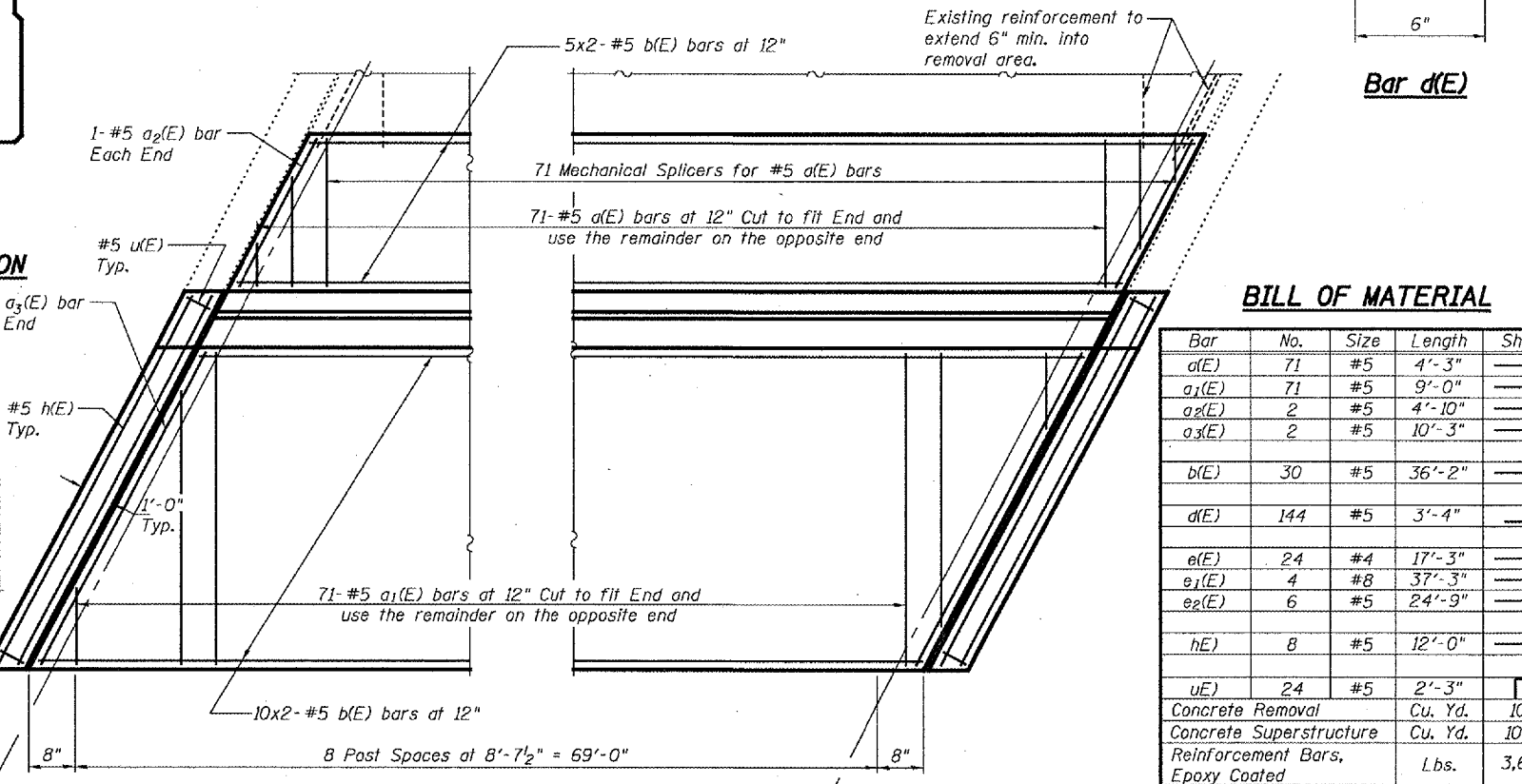
PARAPET JOINT DETAILS



TYPICAL DRAIN SECTION
(Beam 27)



PARAPET INSIDE ELEVATION
(Looking South)



PARTIAL SIDEWALK PLAN

BILL OF MATERIAL

Bar	No.	Size	Length	Shape
a(E)	71	#5	4'-3"	—
a1(E)	71	#5	9'-0"	—
a2(E)	2	#5	4'-10"	—
a3(E)	2	#5	10'-3"	—
b(E)	30	#5	36'-2"	—
d(E)	144	#5	3'-4"	—
e(E)	24	#4	17'-3"	—
e1(E)	4	#8	37'-3"	—
e2(E)	6	#5	24'-9"	—
h(E)	8	#5	12'-0"	—
u(E)	24	#5	2'-3"	—
Concrete Removal			Cu. Yd.	10.6
Concrete Superstructure			Cu. Yd.	10.2
Reinforcement Bars, Epoxy Coated			Lbs.	3,600

BEAM AND DECK DETAILS

F.A.P. RT. 559/339
COOK COUNTY
SN 016-0349

DESIGNED	V.H.V.
CHECKED	A.T.H.
DRAWN	Drew Christopher
CHECKED	V.H.V.

April 24, 2006
EXAMINED *John A. Morris*
ENGINEER OF STRUCTURAL SERVICES
PASSED *Ralph E. Anderson*
ENGINEER OF BRIDGES AND STRUCTURES

MIN. BAR LAP

- #4 = 1'-8"
- #5 = 2'-2"
- #8 = 4'-6"

Reinforcement bars designated (E) shall be epoxy coated.
Bars indicated thus 1 x 2-#5 etc. indicates 1 line of bars with 2 lengths per line.