

F.A.P. RTE.	SECTION	COUNTY	TOTAL SHEETS	SHEET NO.
VAR	120 I	McHENRY	7	1

CONTRACT NO. 60B66

$\frac{7}{1}$
 $= 8$

D-91-391-06

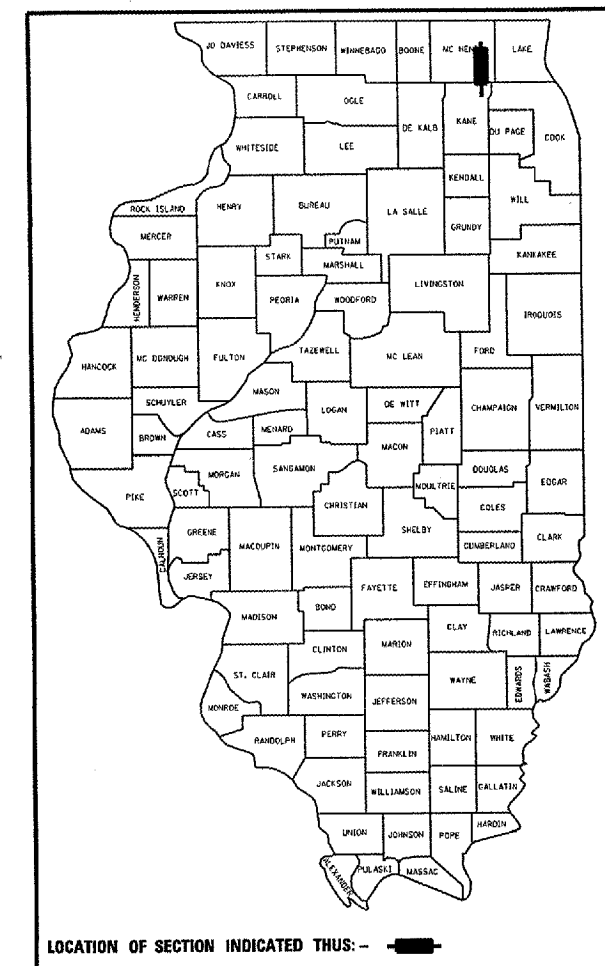
STATE OF ILLINOIS
DEPARTMENT OF TRANSPORTATION
DIVISION OF HIGHWAYS

PROPOSED HIGHWAY PLANS

FOR INDEX OF SHEETS, SEE SHEET NO. 3

IMPROVEMENT LOCATED
IN THE CITY OF CRYSTAL LAKE

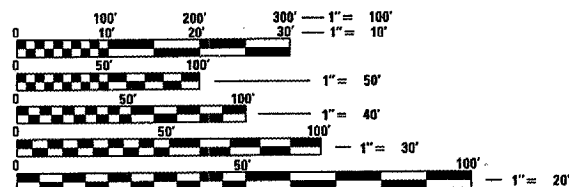
F.A.P. 335 - ILLINOIS ROUTE 176
U.S. ROUTE 14 TO ILL. ROUTE 31
SECTION: 120 I
CRACK AND JOINT SEAL (MULCH)
McHENRY COUNTY
C-91-391-06



TRAFFIC DATA

IL 176 - U.S. 14 TO ILL. 31
2003 ADT = 17,100
SPEED LIMIT = 40 MPH

SEE SHEET NUMBER 2 FOR LOCATION MAP



FULL SIZE PLANS HAVE BEEN PREPARED USING STANDARD ENGINEERING SCALES. REDUCED SIZED PLANS WILL NOT CONFORM TO STANDARD SCALES. IN MAKING MEASUREMENTS ON REDUCED PLANS, THE ABOVE SCALES MAY BE USED.

J.U.L.I.E.
JOINT UTILITY LOCATION INFORMATION FOR EXCAVATION
1-800-892-0123

CONTRACT NO. 60B66

STATE OF ILLINOIS
DEPARTMENT OF TRANSPORTATION
DIVISION OF HIGHWAYS

SUBMITTED May 11 2006
Diane M. O'Keefe/cm
DEPUTY DIRECTOR OF HIGHWAYS, REGION ENGINEER

20
ENGINEER OF DESIGN AND ENVIRONMENT

20
DIRECTOR OF HIGHWAYS, CHIEF ENGINEER

PRINTED BY THE AUTHORITY
OF THE STATE OF ILLINOIS

REGION ONE/BUREAU OF DESIGN
PLAN PREPARATION ENGINEER: K. ENG /R. BORO -- (847) 705-4178

ROUTE	SECTION	COUNTY	TOTAL SHEETS	SHEET NUMBER
VARIOUS	120 I	MCHENRY	7	2

CONTRACT NO. 60B66



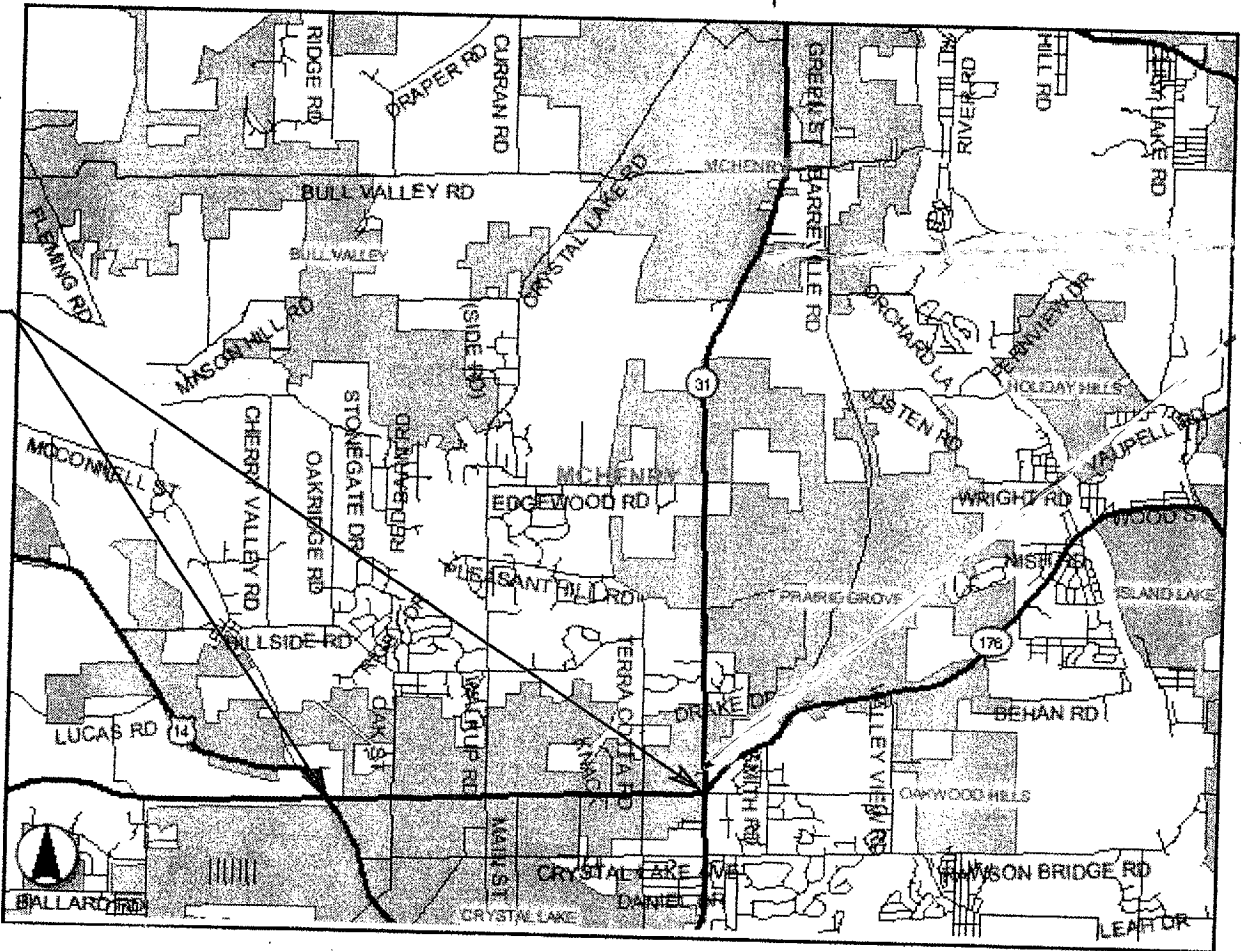
R. 8 E. R. 9 E.

T. 44 N. T. 45 N.

T. 43 N. T. 44 N.

ILL. 176 - U.S. 14
TO ILL. 31

ADT (2003) = 17,100
SPEED LIMIT = 35 MPH



GROSS AND NET LENGTH OF IMPROVEMENT = APPROX. 15,840 L.F. = APPROX. 3.000 MILES

ILLINOIS DEPARTMENT OF TRANSPORTATION
LOCATION MAP

ROUTE	SECTION	COUNTY	TOTAL SHEETS	SHEET NUMBER
VARIOUS	120 I	MCHENRY	7	3

CONTRACT NO. 60B66

INDEX OF SHEETS

SHEET NO.	<u>DESCRIPTION</u>
1	TITLE SHEET
2	LOCATION MAP
3	INDEX OF SHEETS, STATE STANDARDS, AND GENERAL NOTES
4	SUMMARY OF QUANTITIES
5	TYPICAL SECTIONS
6-6A	DETAILS
7	TRAFFIC CONTROL AND PROTECTION FOR SIDE ROADS, INTERSECTIONS AND DRIVEWAYS

GENERAL NOTES

1. BEFORE STARTING ANY EXCAVATION, THE CONTRACTOR SHALL CALL "J.U.L.I.E." AT (800) 892-0123 FOR FIELD LOCATIONS OF BURIED ELECTRIC, TELEPHONE AND GAS UTILITIES. 48 HOUR NOTIFICATION IS REQUIRED.
2. THE CONTRACTOR WILL NOT BE ALLOWED TO SET UP A YARD OR FIELD OFFICE ON STATE (or TOLLWAY) PROPERTY WITHOUT WRITTEN PERMISSION FROM THE DEPARTMENT (or ISTHA).
3. ALL DAMAGE TO EXISTING PAVEMENT MARKINGS OR RAISED REFLECTIVE PAVEMENT MARKERS OUTSIDE THE REMOVAL LINE SHOWN ON THE PLANS SHALL BE REPLACED AT THE CONTRACTOR'S EXPENSE.
4. IT SHALL BE THE CONTRACTOR'S RESPONSIBILITY TO VERIFY ALL DIMENSIONS AND CONDITIONS EXISTING IN THE FIELD PRIOR TO CONSTRUCTION AND ORDERING OF MATERIALS.
5. THE CONTRACTOR SHALL CONTACT THE DISTRICT ONE TRAFFIC CONTROL SUPERVISOR AT (847)705-4470 A MINIMUM OF 72 HOURS IN ADVANCE OF BEGINNING WORK.
6. THESE PLANS HAVE BEEN PREPARED FROM NOTES RECEIVED FROM FIELD MAINTENANCE ENGINEERS.
7. THE CONTRACTOR SHALL BE REQUIRED TO PROVIDE ACCESS TO ABUTTING PROPERTY AT ALL TIMES DURING THE CONSTRUCTION OF THIS PROJECT.
8. DO NOT SCALE PLANS FOR CONSTRUCTION DIMENSIONS.

STATE STANDARDS

STANDARD NO.	<u>DESCRIPTION</u>
701301-02	LANE CLOSURE, 2L 2W, SHORT TIME OPERATIONS
701306-01	URBAN LANE CLOSURE, MULTILANE 2W WITH MOUNTABLE MEDIAN
701311-02	LANE CLOSURE, 2L, 2W, MOVING OPERATIONS-DAY ONLY
702001-06	TRAFFIC CONTROL DEVICES

ILLINOIS DEPARTMENT OF TRANSPORTATION

INDEX OF SHEETS, STATE
STANDARDS AND GENERAL
NOTES

ROUTE	SECTION	COUNTY	TOTAL SHEETS	SHEET NUMBER
VARIOUS	120 I	MCHENRY	7	4

CONTRACT NO. 60B66

SUMMARY OF QUANTITIES

100% STATE
I 000

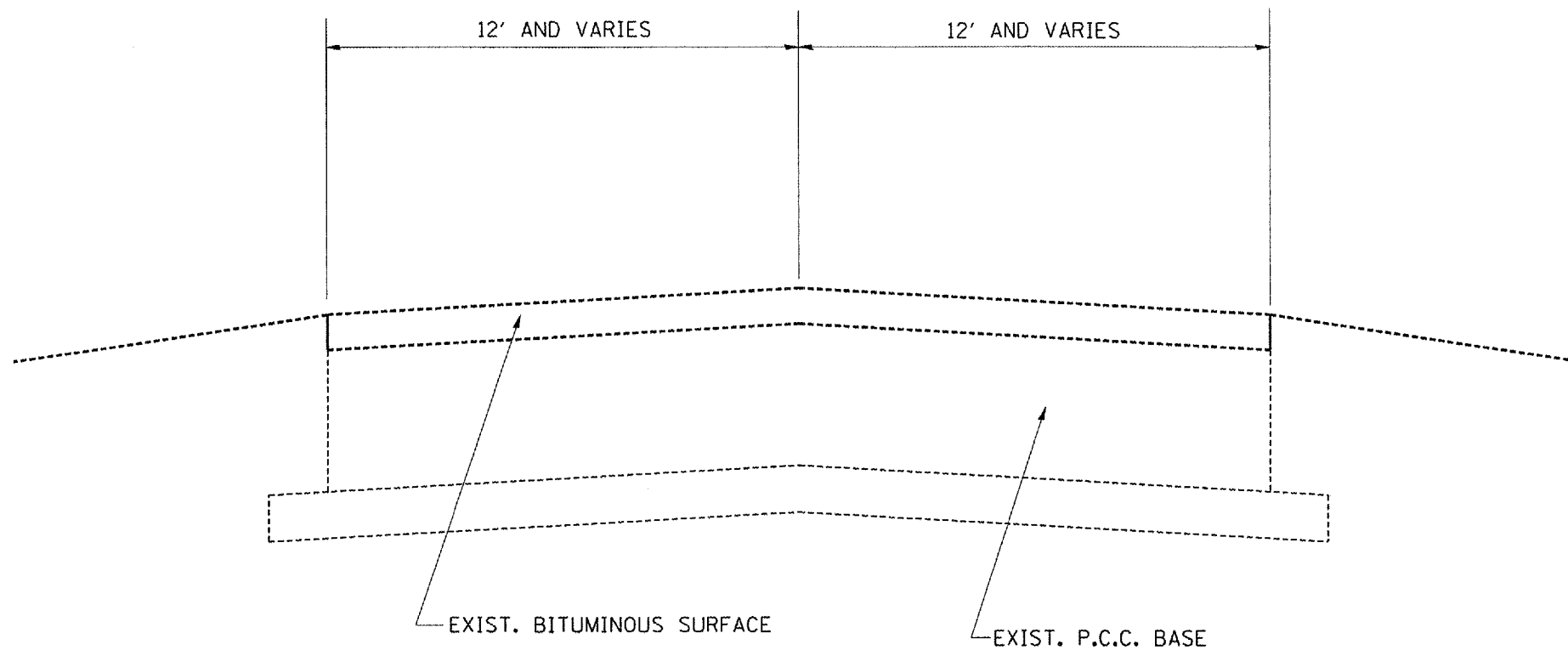
Pay Item	Description	Unit	Total
45100100	CRACK ROUTING (PAVEMENT)	FOOT	1200.00
45100200	CRACK FILLING	POUND	480.00
67100100	MOBILIZATION	L SUM	1.00
70100460	TRAFFIC CONTROL AND PROTECTION, STANDARD 701306	L SUM	1.00
X0322467	TEMPORARY INFORMATION SIGNING FOR LANE CLOSURE	SQ FT	48.00
X0325275	CRACK AND JOINT SEALING (MULCH)	FOOT	120000.00
X0325276	ROADWAY SWEEPING	LANEMI	6.00

ILLINOIS DEPARTMENT OF TRANSPORTATION

SUMMARY OF QUANTITIES

ROUTE	SECTION	COUNTY	TOTAL SHEETS	SHEET NO.
VARIOUS	1201	MCHENRY	7	5

CONTRACT NO. 60B66



TYPICAL SECTION

ILL. ROUTE 176 - U.S. ROUTE 14 TO ILL. ROUTE 31

REVISIONS	
NAME	DATE

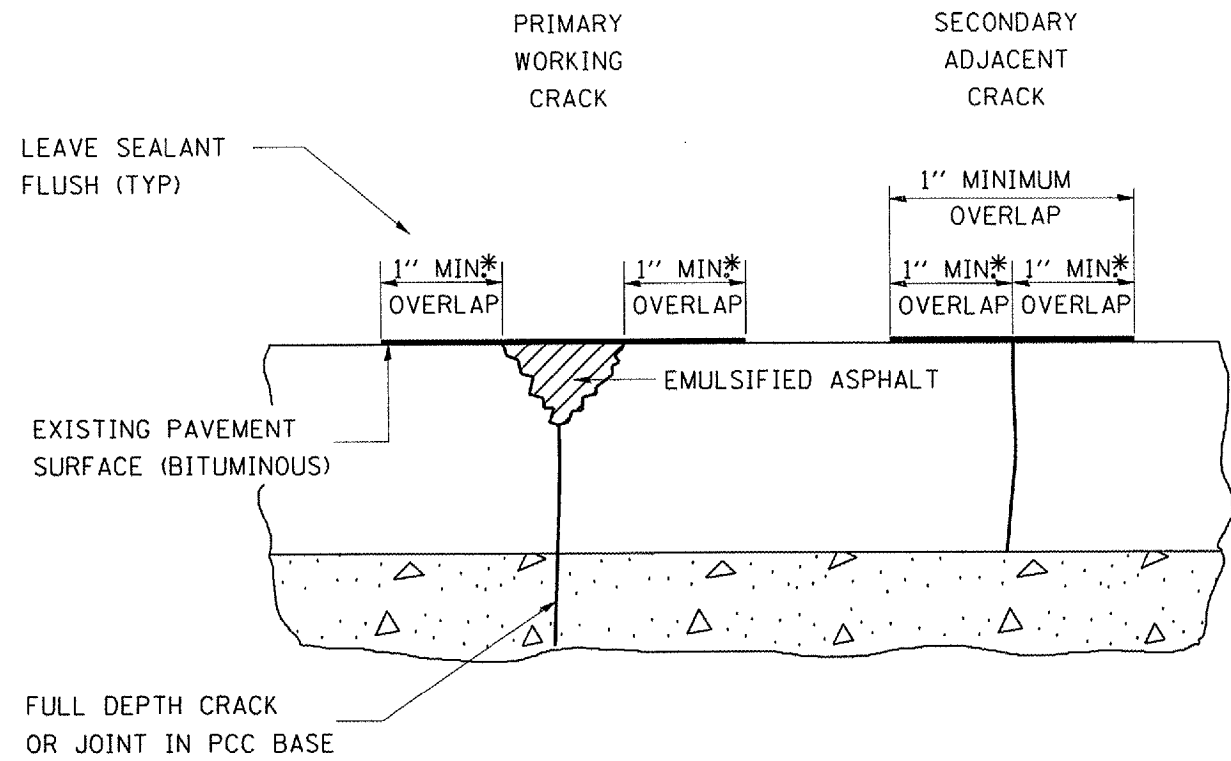
ILLINOIS DEPARTMENT OF TRANSPORTATION
TYPICAL SECTION

SCALE: VERT.
HORIZ.
DATE 3/2/2006

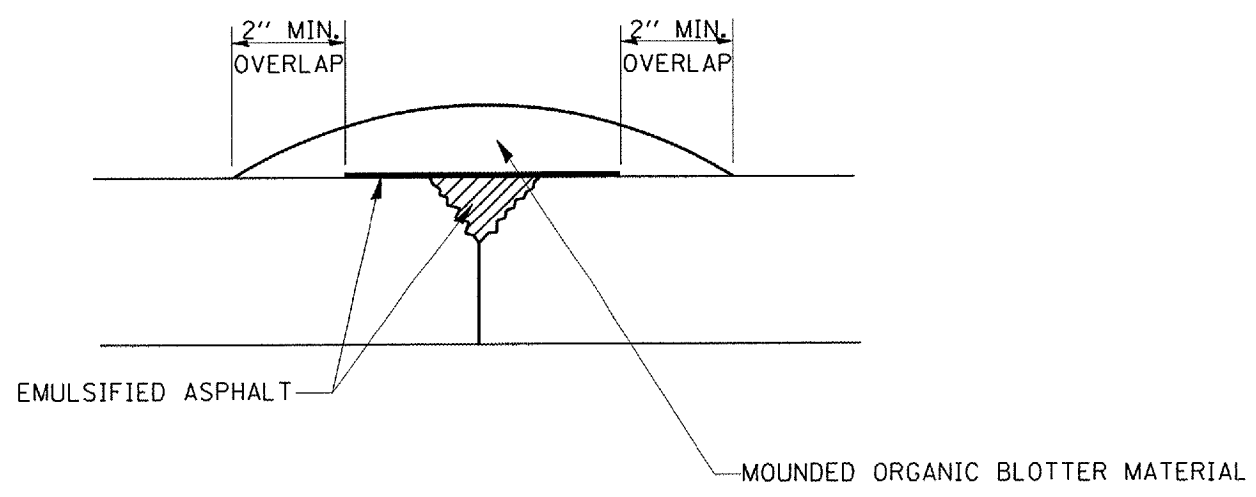
DRAWN BY
CHECKED BY

ROUTE	SECTION	COUNTY	TOTAL SHEETS	SHEET NO.
VARIOUS	1202	MCHENRY	7	6

CONTRACT NO. 60B66



*IN ALL LOCATIONS WHERE THE LONGITUDINAL CRACK CONFLICTS WITH EXISTING PAVEMENT MARKINGS (EITHER EDGE LINE OR LANE LINE) THE CRACK SHALL BE FILLED WITH EMULSIFIED ASPHALT. HOWEVER, THE 2" OVERLAP SHALL BE DELETED TO PREVENT UNNECESSARY DAMAGE TO THE EXISTING PAVEMENT MARKINGS. ALL EXCESSIVE DAMAGES TO EXISTING PAVEMENT MARKINGS & RAISED REFLECTIVE PAVEMENT MARKERS SHALL BE REPLACED AT THE EXPENSE OF THE CONTRACTOR.



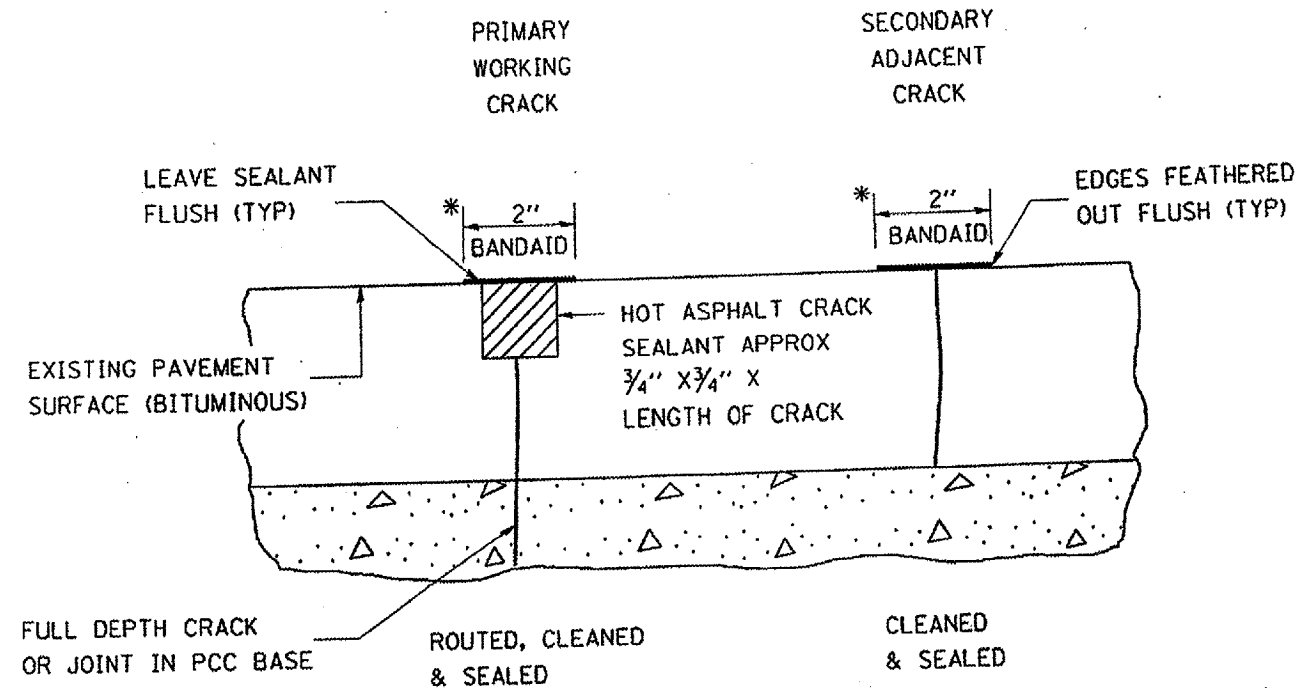
ORGANIC BLOTTER MATERIAL

REVISIONS	
NAME	DATE

ILLINOIS DEPARTMENT OF TRANSPORTATION
CRACK AND JOINT SEALING (MULCH)
 SCALE: VERT. _____
 HORIZ. _____
 DATE 3/2/2006
 DRAWN BY _____
 CHECKED BY _____

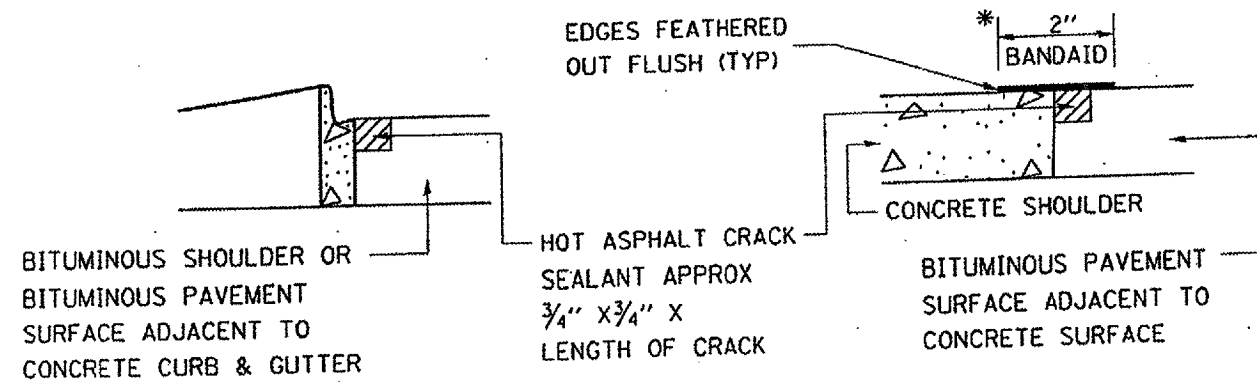
ROUTE	SECTION	COUNTY	TOTAL SHEETS	SHEET NO.
VARIOUS	1201	MCHEERY	7	6A

CONTRACT NO. 60866



* IN ALL LOCATIONS WHERE THE LONGITUDINAL CRACK CONFLICTS WITH EXISTING PAVEMENT MARKINGS (EITHER EDGE LINE OR LANE LINE) THE CRACK SHALL BE ROUTED & THE RESULTING RESERVOIR FILLED WITH SEALANT. HOWEVER, THE 2" BANDAID SEALANT STRIP SHALL BE DELETED TO PREVENT UNNECESSARY DAMAGE TO THE EXISTING PAVEMENT MARKINGS. ALL DAMAGES TO EXISTING PAVEMENT MARKINGS & RAISED REFLECTIVE PAVEMENT MARKERS IN EXCESS OF THAT CAUSED BY THE ROUTING OPERATION SHALL BE REPLACED AT THE EXPENSE OF THE CONTRACTOR.

LONGITUDINAL JOINT

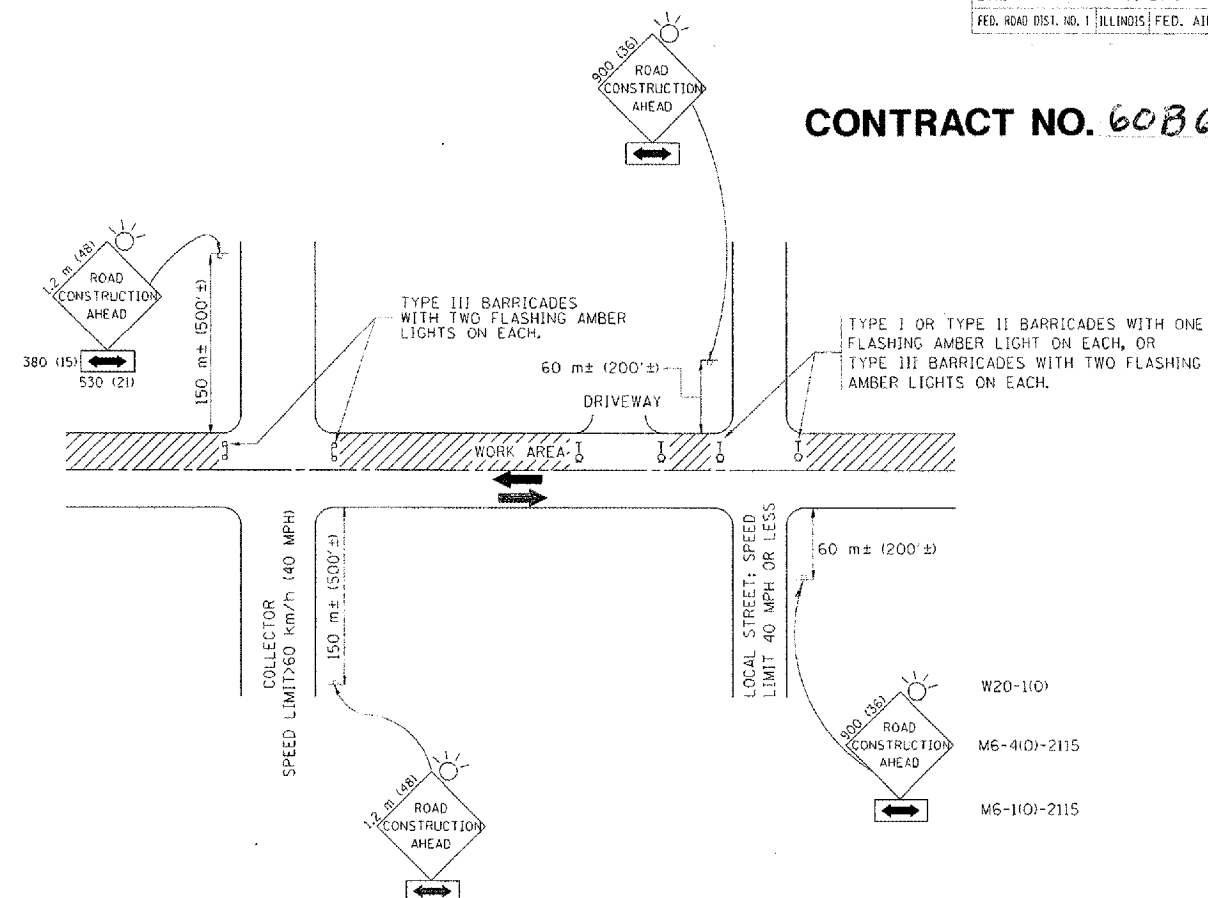


CRACK & JOINT SEALING DETAIL

REVISIONS	
NAME	DATE

ILLINOIS DEPARTMENT OF TRANSPORTATION
CRACK AND JOINT SEAL DETAIL
 SCALE: VERT. _____ HORIZ. _____
 DATE 4/10/2006
 DRAWN BY _____ CHECKED BY _____

CONTRACT NO. 60866



TRAFFIC CONTROL AND PROTECTION FOR SIDE ROADS, INTERSECTIONS, AND DRIVEWAYS

NOTES:

- A. FOR NO LANE RESTRICTION ON THE SIDE ROAD OR DRIVEWAYS
- SIDE ROAD WITH A SPEED LIMIT OF 60 km/h (40 MPH) OR LESS AS SHOWN ON THE DRAWING AND AS DIRECTED BY THE ENGINEER:
 - ONE ROAD CONSTRUCTION AHEAD SIGN 900x900 (36x36) WITH A FLASHER AND FLAG MOUNTED ON IT APPROXIMATELY 60 m (200') IN ADVANCE OF THE MAIN ROUTE.
 - THE CLOSED PORTION OF THE MAIN ROUTE SHALL BE PROTECTED BY BLOCKING WITH TYPE I, TYPE II OR TYPE III BARRICADES, 1/3 OF THE CROSS SECTION OF THE CLOSED PORTION.
 - SIDE ROAD WITH A SPEED LIMIT GREATER THAN 60 km/h (40 MPH) AS SHOWN ON THE DRAWING AND AS DIRECTED BY THE ENGINEER:
 - ONE ROAD CONSTRUCTION AHEAD SIGN 1.2 m x 1.2 m (48x48) WITH A FLASHER MOUNTED ON IT APPROXIMATELY 150 m (500') IN ADVANCE OF THE MAIN ROUTE.
 - THE CLOSED PORTION OF THE MAIN ROUTE SHALL BE PROTECTED BY BLOCKING WITH TYPE III BARRICADES, 1/2 OF THE CROSS SECTION OF THE CLOSED PORTION.
3. WHEN THE SIDE ROAD LIES BETWEEN THE BEGINNING OF THE MAINLINE SIGNING AND THE WORK ZONE, A SINGLE HEADED ARROW (M6-1) SHALL BE USED IN LIEU OF THE DOUBLE HEADED ARROW (M6-4).
- B. FOR A LANE CLOSURE ON A SIDE ROAD OR DRIVEWAY:
- USE APPLICABLE PORTIONS OF THE TYPICAL APPLICATION OF TRAFFIC CONTROL DEVICES (STD. 701501, STD. 701606 OR THE APPROPRIATE STANDARD). THE SPACING OF SIGNS AND BARRICADES SHALL BE ADJUSTED FOR FIELD CONDITIONS AS DIRECTED BY THE ENGINEER. THE DIRECTIONAL ARROW SHALL BE COVERED OR REMOVED WHEN NO LONGER CONSISTENT WITH THE SIDE ROAD LANE CLOSURE.
- C. ADVANCE WARNING SIGNS ARE TO BE OMITTED ON DRIVEWAY UNLESS OTHERWISE NOTED.
- D. THE TRAFFIC CONTROL AND PROTECTION FOR SIDE ROADS, INTERSECTIONS, AND DRIVEWAYS SHALL BE INCIDENTAL TO THE COST OF SPECIFIED TRAFFIC CONTROL STANDARDS OR ITEMS.

REVISIONS	
NAME	DATE
LHA	6/89
T. RAMMACHER	09/08/94
J. OBERLE	10/18/95
A. HOUSEH	03/06/96
A. HOUSEH	10/15/96
T. RAMMACHER	01/06/00

ILLINOIS DEPARTMENT OF TRANSPORTATION
 TRAFFIC CONTROL AND PROTECTION
 FOR
 SIDE ROADS, INTERSECTIONS, AND
 DRIVEWAYS

SCALE: VERT.
 HORIZ.
 DATE 10/18/2002

DRAWN BY
 CHECKED BY
 TC-10