

BENCHMARKS

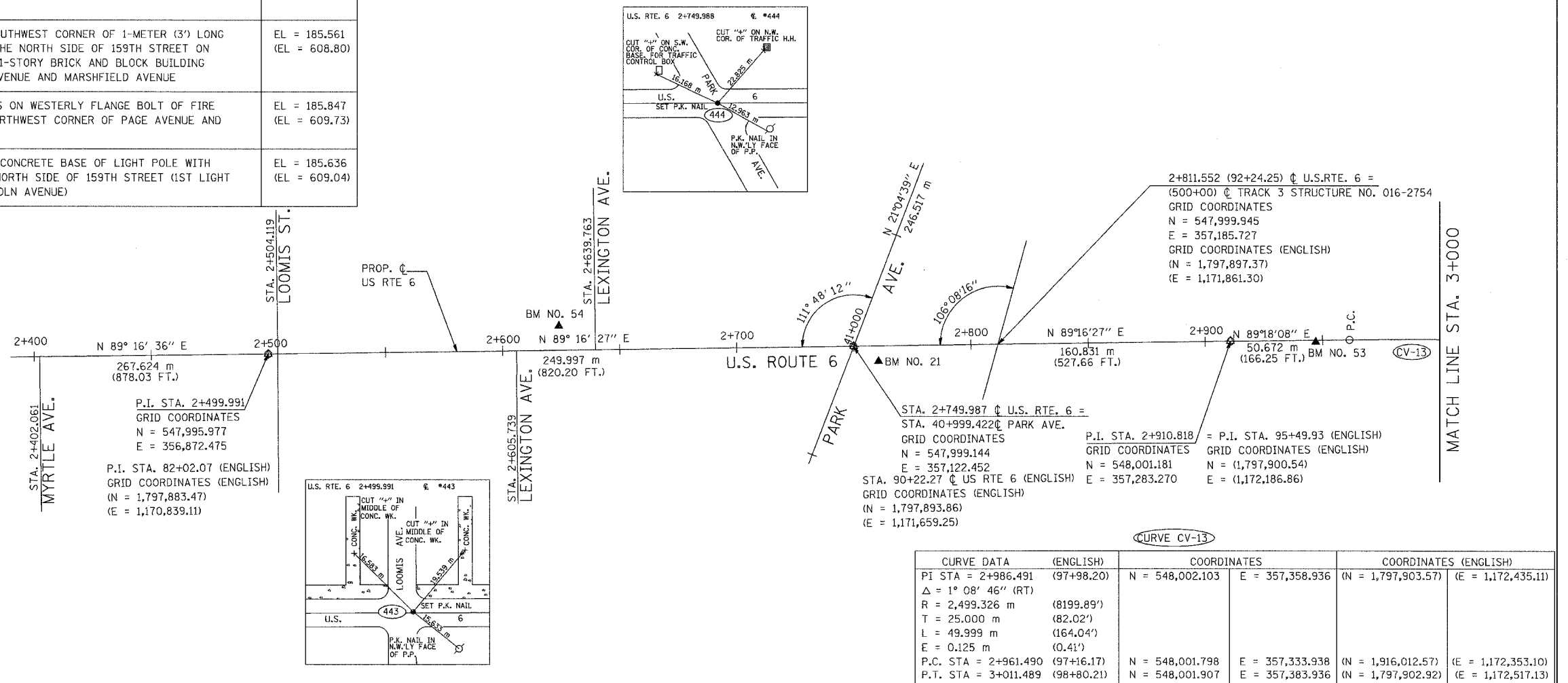
BM NO. 21	SET CROSS CUT ON WALK AT THE SOUTHEAST CORNER OF PARK AVENUE AND 159TH STREET	EL = 183.814 (EL = 603.06)
BM NO. 51	BOX CUT ON THE SOUTHWEST CORNER OF TRAFFIC HANDHOLE AT THE SOUTHEAST CORNER OF CAROL AVENUE AND 159TH STREET	EL = 184.317 (EL = 604.71)
BM NO. 52	CROSS CUT ON WESTERLY FLANGE BOLT ON FIRE HYDRANT AT THE NORTHWEST CORNER OF FINCH AVENUE AND 159TH STREET	EL = 184.897 (EL = 606.62)
BM NO. 53	BOX CUT ON THE SOUTHEASTERLY CORNER OF RAILROAD BRIDGE PIER IN THE C. OF 159TH STREET AT EAST FACE OF BRIDGE APPROX. 30-METERS (100') WEST OF CENTER AVE.	EL = 183.871 (EL = 603.25)
BM NO. 54	CHISELED CROSS ON WESTERLY BOLT OF FIRE HYDRANT AT THE NORTHWEST CORNER OF LEXINGTON AVENUE AND 159TH STREET	EL = 185.274 (EL = 607.85)
BM NO. 55	CHISELED BOX CUT ON SOUTH SIDE OF CONCRETE BASE FOR MAST ARM LIGHT POLE ON THE NORTH SIDE OF 159TH ST. ON EAST BACK OF CURB OF GAUGER AVENUE EXTENDED NORTH	EL = 185.441 (EL = 608.40)
BM NO. 56	CHISELED CROSS ON WESTERLY FLANGE BOLT OF FIRE HYDRANT AT THE NORTHWEST CORNER OF ASHLAND AVENUE AND 159TH STREET	EL = 185.600 (EL = 608.92)
BM NO. 57	SET BOX CUT ON SOUTHWEST CORNER OF 1-METER (3') LONG GARAGE APRON ON THE NORTH SIDE OF 159TH STREET ON THE WEST FACE OF 1-STORY BRICK AND BLOCK BUILDING BETWEEN PAULINA AVENUE AND MARSHFIELD AVENUE	EL = 185.561 (EL = 608.80)
BM NO. 58	SET CHISELED CROSS ON WESTERLY FLANGE BOLT OF FIRE HYDRANT AT THE NORTHWEST CORNER OF PAGE AVENUE AND 159TH STREET	EL = 185.847 (EL = 609.73)
BM NO. 59	SET CUT CROSS ON CONCRETE BASE OF LIGHT POLE WITH MAST ARM ON THE NORTH SIDE OF 159TH STREET (1ST LIGHT POLE WEST OF LINCOLN AVENUE)	EL = 185.636 (EL = 609.04)

BM NO. 60	BOX CUT ON SOUTHWEST CORNER OF CONCRETE BASE OF TRAFFIC SIGNAL LIGHT ON THE NORTHEAST CORNER OF DIXIE HIGHWAY AND 159TH STREET	EL = 185.715 (EL = 609.30)
BM NO. 62	CHISELED CROSS ON THE NORTHERLY BOLT OF FIRE HYDRANT ON THE NORTH SIDE OF 159TH STREET AND +/- CENTER LINE OF CLAREMONT AVENUE EXTENDED	EL = 186.295 (EL = 611.20)
BM NO. 63	CHISELED CROSS ON SOUTHWESTLY BOLT ON FLANGE OF 1ST FIRE HYDRANT NORTH OF 1ST ALLEY SOUTH OF 157TH STREET ON THE EAST SIDE OF WEST AVENUE	EL = 184.791 (EL = 606.27)
BM NO. 65	BOX CUT ON TOP OF 0.45 m (18") RCP FLARED END SECTION ON THE SOUTH SIDE OF ENTRANCE TO (ALIED-TUBE CONDUIT) GATE 2 ON THE EAST SIDE OF CENTER STREET	EL = 184.896 (EL = 606.61)

NOTE: DIMENSIONS AND ELEVATION IN BRACKETS "( )" ARE IN ENGLISH UNITS OF MEASURE.

F.A.P. RTE.	SECTION	COUNTY	TOTAL SHEETS	SHEET NO.
351	3277R	COOK	66	6
STA. 2+390		TO STA. 3+000		
FED. ROAD DIST. NO.		ILLINOIS	FED. AID PROJECT	

CONTRACT NO. 62206



CURVE CV-13

CURVE DATA (ENGLISH)	COORDINATES	COORDINATES (ENGLISH)
PI STA = 2+986.491 (97+98.20)	N = 548,002.103 E = 357,358.936	(N = 1,797,903.57) (E = 1,172,435.11)
Δ = 1° 08' 46" (RT)		
R = 2,499.326 m (8199.89')		
T = 25.000 m (82.02')		
L = 49.999 m (164.04')		
E = 0.125 m (0.41')		
P.C. STA = 2+961.490 (97+16.17)	N = 548,001.798 E = 357,333.938	(N = 1,916,012.57) (E = 1,172,353.10)
P.T. STA = 3+011.489 (98+80.21)	N = 548,001.907 E = 357,383.936	(N = 1,797,902.92) (E = 1,172,517.13)

REVISIONS	
NAME	DATE

ILLINOIS DEPARTMENT OF TRANSPORTATION  
 US RTE 6 FROM I-294 TO IL RTE 1  
 ALIGNMENT, TIES AND  
 BENCHMARKS  
 STA. 2+390 TO STA. 3+000

DRAWN BY VAP  
 CHECKED BY JRP  
 DATE 03/27/06

