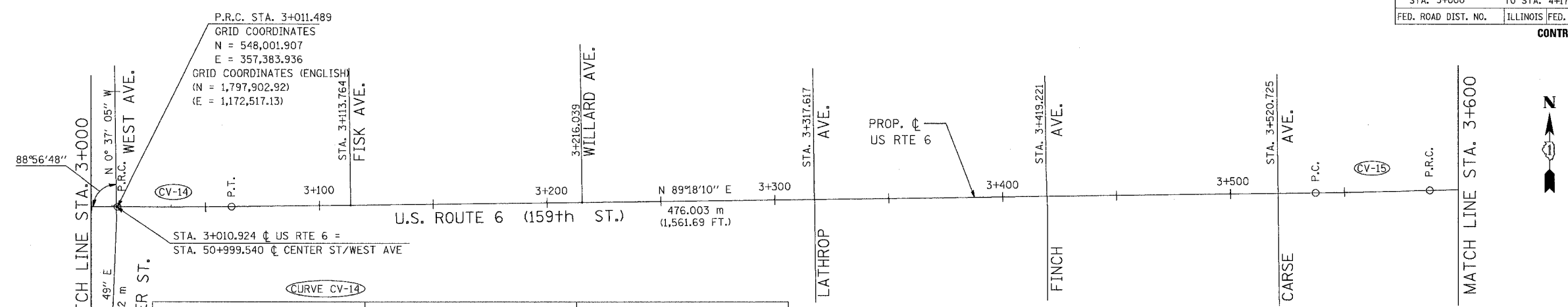


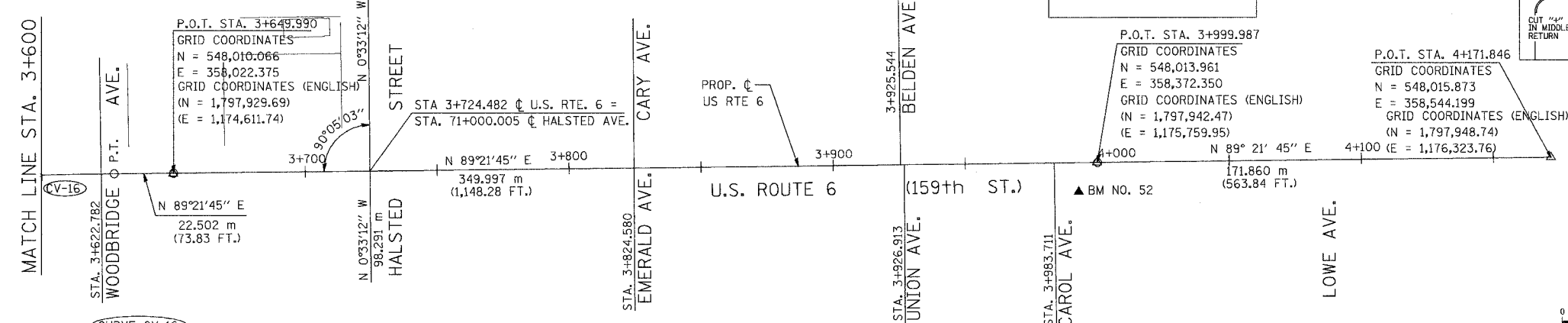
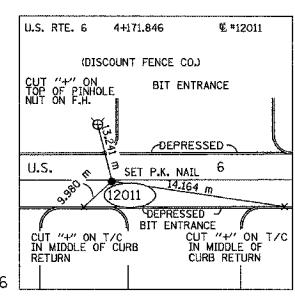
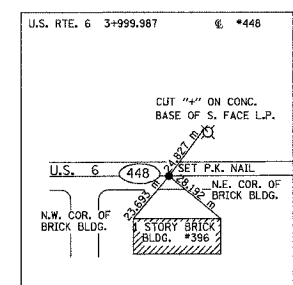
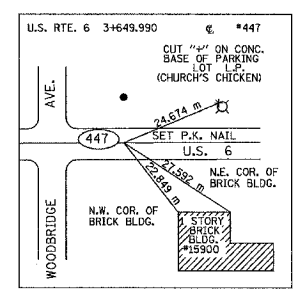
F.A.P. RTE.	SECTION	COUNTY	TOTAL SHEETS	SHEET NO.
351	3277R	COOK	66	7
STA. 3+000		TO STA. 4+171.846		
FED. ROAD DIST. NO.		ILLINOIS FED. AID PROJECT		

CONTRACT NO. 62206



CURVE DATA (ENGLISH)		COORDINATES		COORDINATES (ENGLISH)	
PI STA = 3+036.489	99+62.23)	N = 548,001.712	E = 357,408.935	(N = 1,916,012.28)	(E = 1,172,599.15)
$\Delta = 1^\circ 08' 45''$ (LT)					
R = 2,499.907 m	(8201.79')				
T = 25.000 m	(82.02')				
L = 49.998 m	(164.04')				
E = 0.125 m	(0.41')				
P.C. STA = 3+011.489	(98+80.21)	N = 548,001.907	E = 357,383.936	(N = 1,916,012.92)	(E = 1,172,517.13)
P.T. STA = 3+061.487	(100+44.25)	N = 548,002.016	E = 357,433.933	(N = 1,916,013.28)	(E = 1,172,681.16)

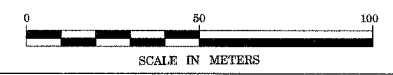
CURVE DATA		COORDINATES		COORDINATES (ENGLISH)	
PI STA = 3+562.491		N = 548,008.113	E = 357,934.899	(N = 1,797,923.28)	(E = 1,174,324.75)
$\Delta = 1^\circ 11' 16''$ (LT)					
R = 2,411.904 m					
T = 25.000 m					
L = 49.999 m					
E = 0.130 m					
P.C. STA = 3+537.490		N = 548,007.809	E = 357,909.901	(N = 1,797,922.29)	(E = 1,174,242.73)
P.T. STA = 3+587.489		N = 548,008.935	E = 357,959.886	(N = 1,797,925.98)	(E = 1,174,406.73)



PROP. CURVE C-1000	COORDINATES		COORDINATES (ENGLISH)	
PI STA = 3+607.489	N = 548,009.593	E = 357,979.875	(N = 1,797,928.14)	(E = 1,174,472.31)
$\Delta = 1^\circ 14' 51''$ (RT)				
R = 1,837.125 m				
T = 20.000 m				
L = 39.998 m				
E = 0.109 m				
P.C. STA = 3+587.489	N = 548,008.935	E = 357,959.886	(N = 1,797,925.98)	(E = 1,174,406.73)
P.T. STA = 3+627.487	N = 548,009.816	E = 357,999.874	(N = 1,797,928.87)	(E = 1,174,537.92)

NOTE: DIMENSIONS AND ELEVATION IN BRACKETS "()" ARE IN ENGLISH UNITS OF MEASURE.

REVISIONS	
NAME	DATE



ILLINOIS DEPARTMENT OF TRANSPORTATION
 US RTE 6 FROM I-294 TO IL RTE 1
 ALIGNMENT, TIES AND
 BENCHMARKS
 STA. 3+000 TO STA. 4+171.846
 DATE 03/27/06
 DRAWN BY VAP
 CHECKED BY JRP