

F.A.P. RTE.	SECTION	COUNTY	TOTAL SHEETS	SHEET NO.
351	3277R	COOK	66	8
STA.		TO STA.		
FED. ROAD DIST. NO.		ILLINOIS FED. AID PROJECT		

CONTRACT NO. 62206

SIGN LEGEND

END DETOUR
 (28) M4-6
 24" x 12"
 (600mm x 300mm)

DETOUR
 (30L) (30R)
 M4-10 L OR M4-10 R
 48" x 18"
 (1200mm x 450mm)

DETOUR AHEAD
 (31)
 W20-2
 48" x 48"
 (1200mm x 1200mm)

DETOUR 500 FT
 (32)
 W20-2
 48" x 48"
 (1200mm x 1200mm)

ROAD CLOSED TO WIDE LOADS 0.5 MILES AHEAD
 (34)
 60" x 30"
 (1500mm x 750mm)

ROAD CLOSED TO WIDE LOADS 1.5 MILES AHEAD
 (35)
 60" x 30"
 (1500mm x 750mm)

ROAD CLOSED TO WIDE LOADS 0.5 MILES AHEAD
 (34C)
 60" x 30"
 (1500mm x 750mm)

ROAD CLOSED TO WIDE LOADS 1.5 MILES AHEAD
 (35C)
 60" x 30"
 (1500mm x 750mm)

WIDE LOAD DETOUR
 (36)
 60" x 12"
 (1500mm x 300mm)

DETOUR
 (36C)
 24" x 12"
 (600mm x 300mm)

WEST
 (37)
 M3-4
 24" x 12"
 (600mm x 300mm)

EAST
 (38)
 M3-2
 24" x 12"
 (600mm x 300mm)

U.S. 6
 (39)
 W17-1100
 30" x 12"
 (750mm x 300mm)

159th ST.
 (40)
 W17-1100
 30" x 12"
 (750mm x 300mm)

159th STREET CLOSED TO WIDE LOADS WEST OF CENTER ST.
 (41L) (41R)
 M5-1L OR M5-1R
 21" x 15"
 (525mm x 375mm)

159th STREET CLOSED TO WIDE LOADS EAST OF PARK AVE.
 (42L) (42R)
 M6-1L OR M6-1R
 21" x 15"
 (525mm x 375mm)

159th STREET CLOSED TO WIDE LOADS WEST OF CENTER ST.
 (43)
 M6-3
 21" x 15"
 (525mm x 375mm)

159th STREET CLOSED TO WIDE LOADS EAST OF PARK AVE.
 (44L) (44R)
 M6-5L OR M6-6R
 21" x 15"
 (525mm x 375mm)

159th STREET CLOSED TO WIDE LOADS EAST OF PARK AVE.
 (45L) (45R)
 M5-2L OR M5-2R
 21" x 15"
 (525mm x 375mm)

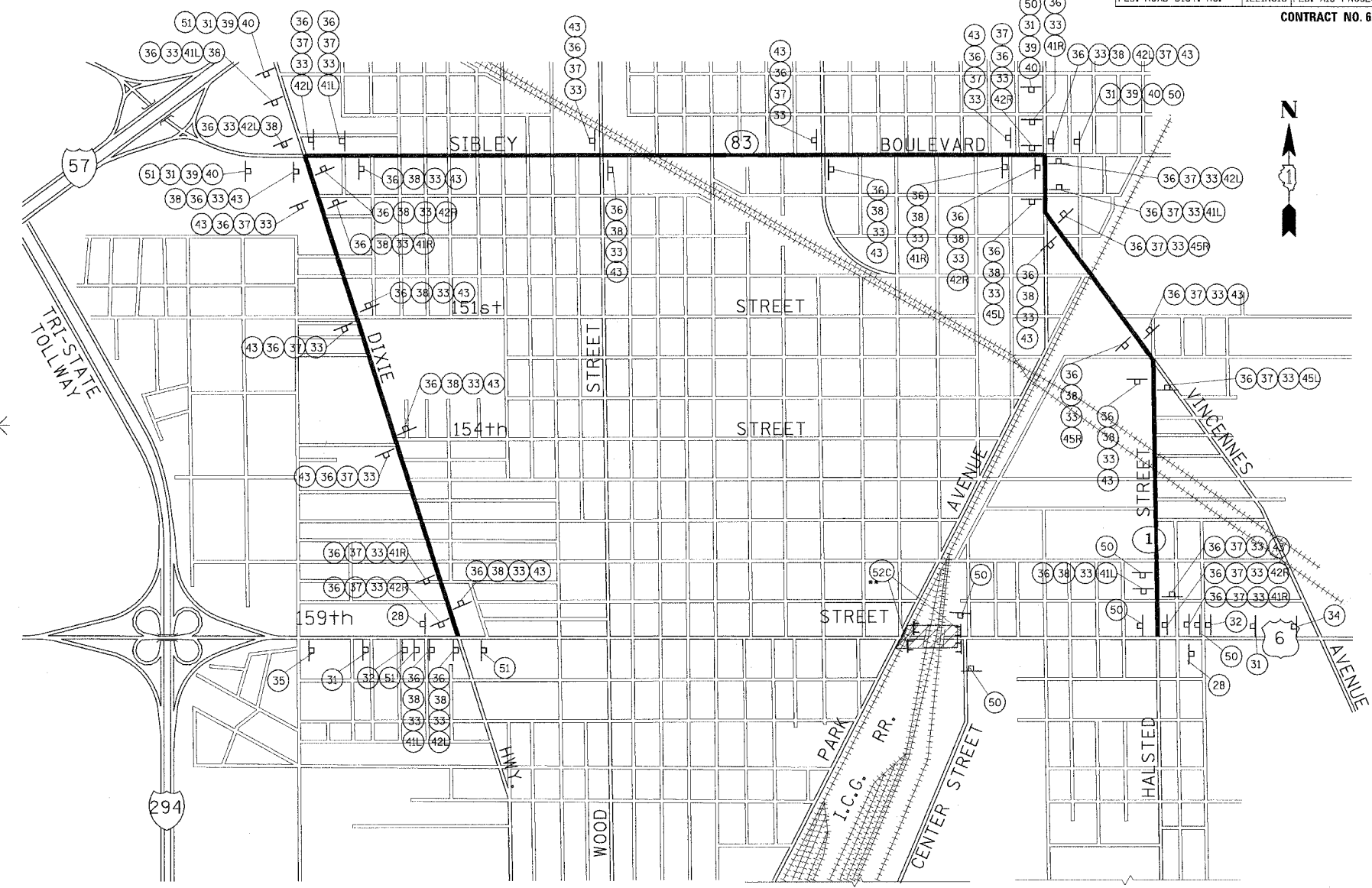
ROAD CLOSED
 (50)
 R11-3a
 60" x 30"
 (1500mm x 750mm)

ROAD CLOSED
 (50C)
 R11-3a
 60" x 30"
 (1500mm x 750mm)

ROAD CLOSED
 (51)
 R11-3a
 60" x 30"
 (1500mm x 750mm)

ROAD CLOSED
 (51C)
 R11-3a
 60" x 30"
 (1500mm x 750mm)

ROAD CLOSED
 (52C)
 R11-2
 48" x 30"
 (1200mm x 750mm)



DETOUR ROUTE, WITH SIGNAGE

LEGEND

- TEMPORARY TRAFFIC ADVISORY SIGN
- SIGN LEGEND NUMBER (SEE SIGN LEGEND FOR SIGNS AND CORRESPONDING NUMBERS)
- CONSTRUCTION WORK ZONE
- APPROVED DETOUR ROUTE

NOTE: ALL DETOUR SIGNS AND BARRICADES SHALL BE INCLUDED IN THE COST OF "TRAFFIC CONTROL AND PROTECTION FOR TEMPORARY DETOUR".

* NOTE: SIGNS 34, 35, 36, 50 AND 51 SHALL BE REPLACED WITH SIGNS 34C, 35C, 36C, 50C AND 51C, RESPECTIVELY, DURING PERIODS OF PERMITTED ROAD CLOSURE OF U.S. ROUTE 6 (159TH STREET).

* NOTE: SIGNS 52C SHALL ONLY BE PLACED ON TYPE III BARRICADES DURING PERIODS OF PERMITTED ROAD CLOSURE OF U.S. ROUTE 6 (159TH STREET).

REVISIONS	
NAME	DATE

ILLINOIS DEPARTMENT OF TRANSPORTATION
 US RTE 6 FROM I-294 TO IL RTE 1
 MAINTENANCE OF TRAFFIC
 DETOUR ROUTING

DATE 03/27/06
 DRAWN BY RTG
 CHECKED BY JRP