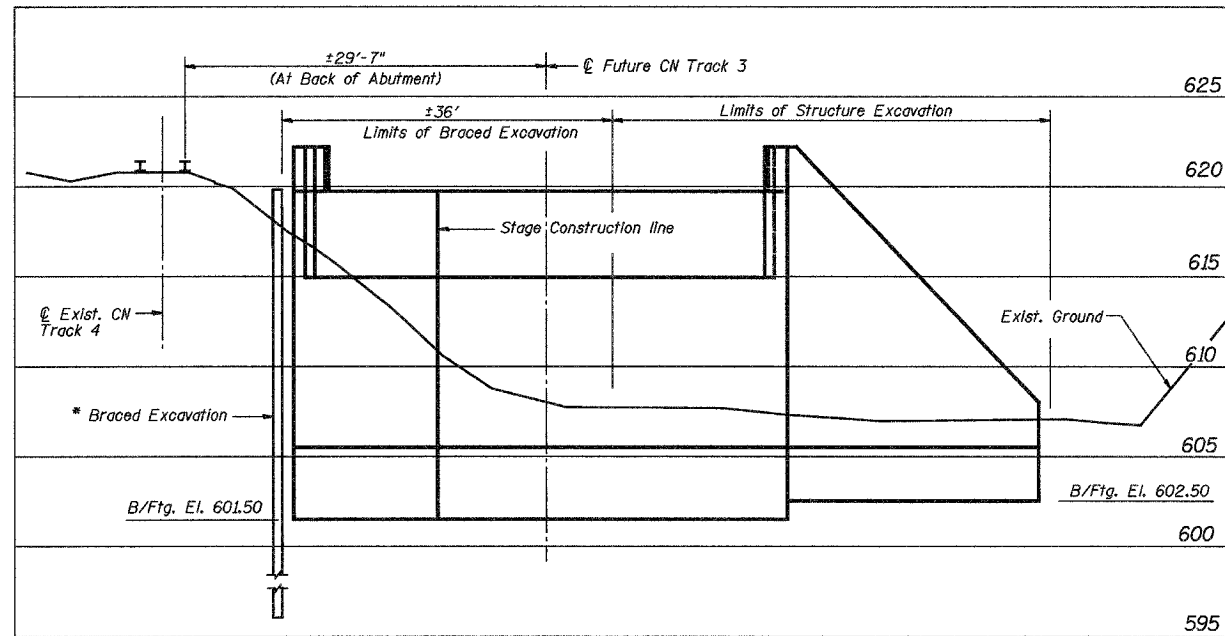
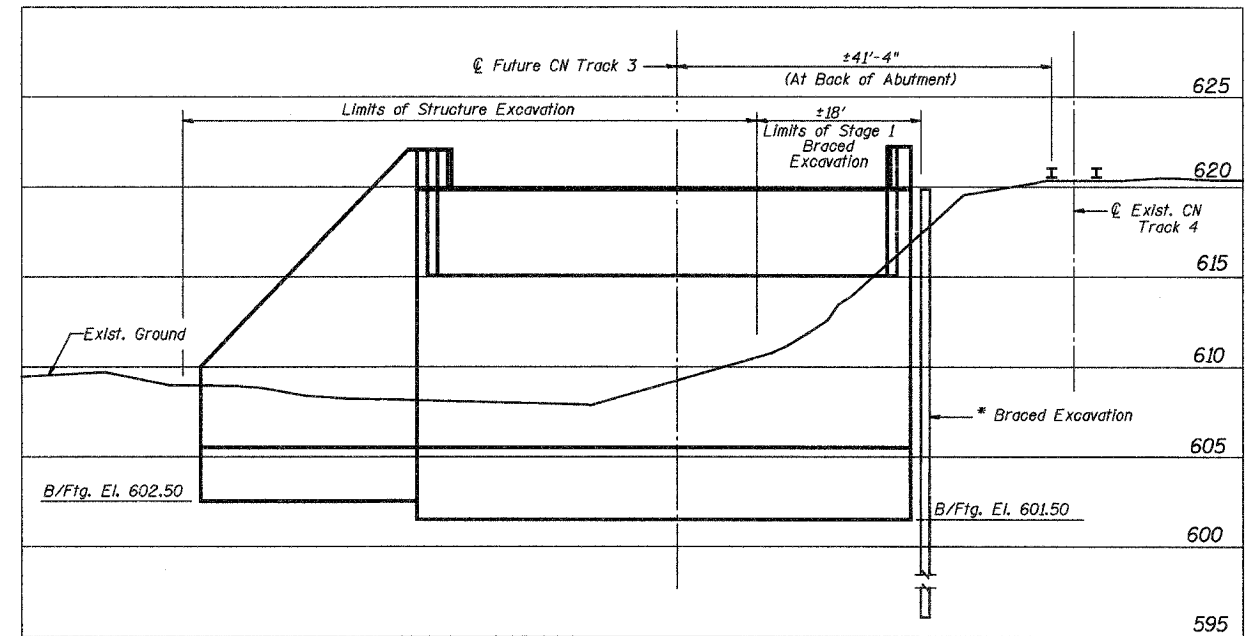


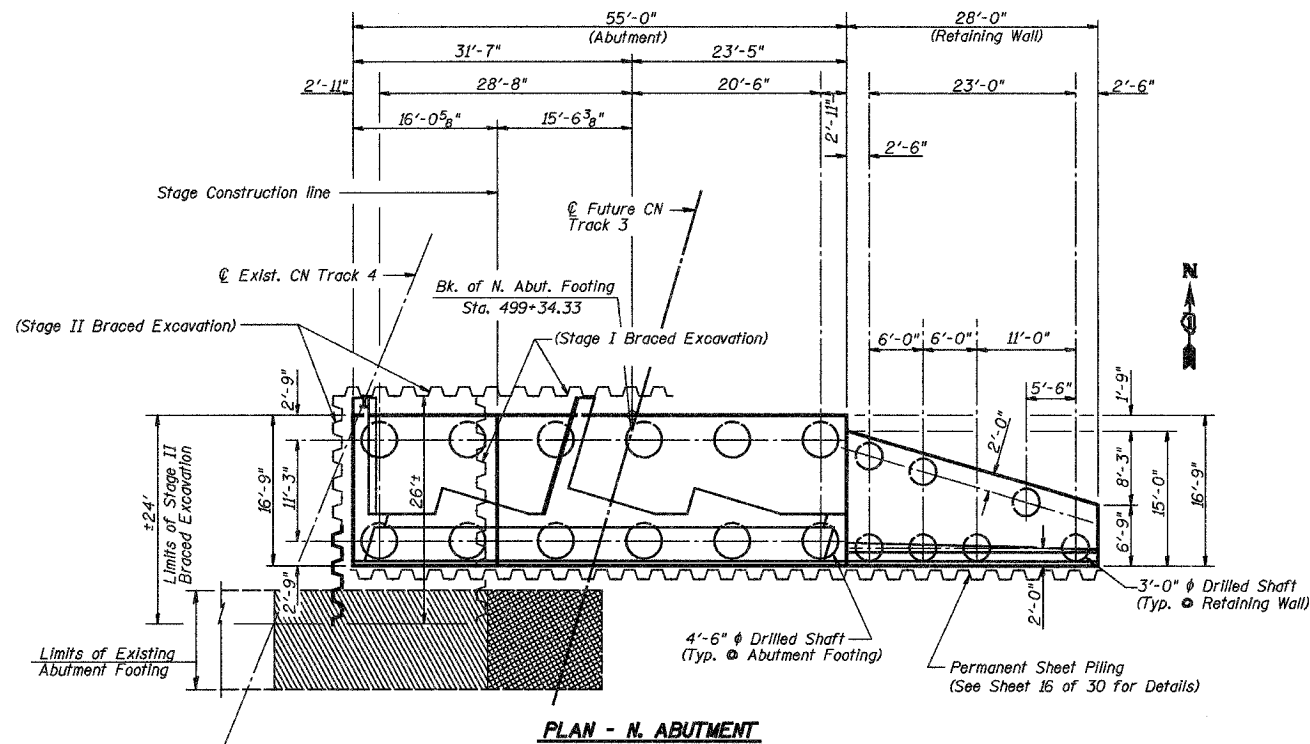
| ROUTE NO. | SECTION | COUNTY | TOTAL SHEETS | SHEET NO. |
|-----------------------|---------|----------|-------------------|-----------|
| F.A.P. 351 | 3277R | COOK | 66 | 22 |
| FED. ROAD DIST. NO. 7 | | ILLINOIS | FED. AID PROJECT- | |
| Contract No. 62206 | | | | |



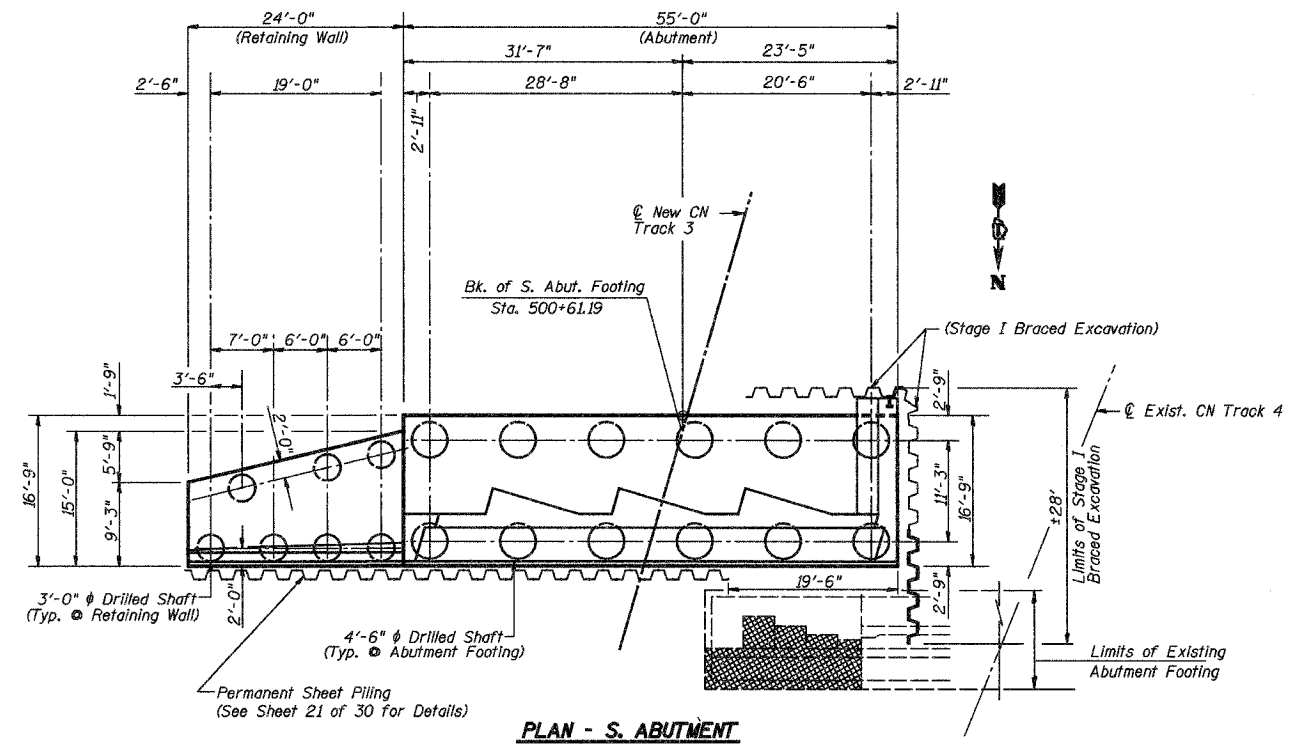
ELEVATION
(Looking North)





ELEVATION
(Looking South)



PLAN - N. ABUTMENT



PLAN - S. ABUTMENT

 Indicates Stage I Removal
 Indicates Stage II Removal

Note:
* Temporary and Permanent Sheet Piling at these locations for Braced Excavation shall be included in the cost of Braced Excavation. See Special Provisions.

| BRACED EXCAVATION DETAILS | | | |
|---------------------------|--|--|-------------|
| Date 3/27/06 | Designed TDN | CN RAILROAD BRIDGE OVER U.S. 6 (159TH STREET) F.A.P. RTE. 351 SECTION 3277R COOK COUNTY STATION 92+24.25 STRUCTURE NO. 016-2754 | Sheet No. |
| Revisions | Drawn BKN | | 4 |
| | Checked DCS | | of 30 |
| | Approved KWB | | URS Job No. |
| Prepared By: | 3040 N. University Ave., Suite 1 Decatur, IL. | | 36430825 |