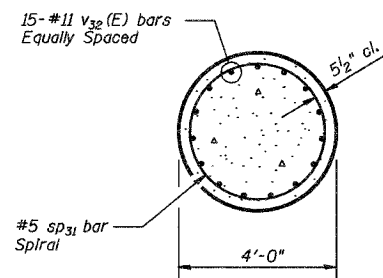
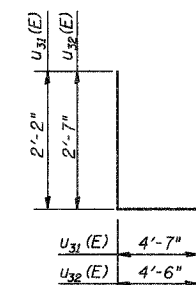
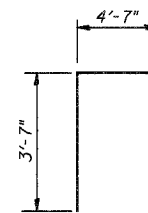
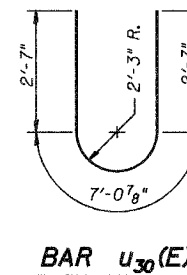
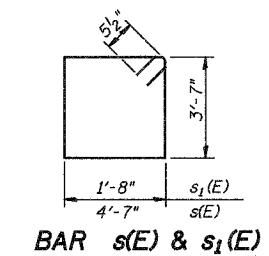


DRILLED SHAFT DETAIL



SECTION A-A



**PIER
BILL OF MATERIAL**

Bar	No.	Size	Length	Shape
h ₃₀ (E)	8	#10	34'-3"	—
h ₃₁ (E)	8	#10	11'-5"	—
h ₃₂ (E)	10	#5	4'-8"	—
h ₃₃ (E)	10	#5	5'-0"	—
h ₃₄ (E)	12	#5	31'-9"	—
h ₃₅ (E)	12	#5	18'-7"	—
h ₃₆ (E)	6	#5	34'-3"	—
h ₃₇ (E)	6	#5	11'-5"	—
D ₃₀ (E)	16	#10	34'-3"	—
D ₃₁ (E)	16	#10	11'-5"	—
s(E)	65	#5	17'-3"	□
s ₁ (E)	60	#5	11'-5"	□
s ₂ (E)	42	#5	11'-9"	□
sp ₃₀ (E)	6	#5	14'-4"	▩
sp ₃₁	6	#5	17'-11"	▩
u ₃₀ (E)	12	#6	12'-3"	U
u ₃₁ (E)	12	#5	8'-11"	U
u ₃₂ (E)	30	#5	9'-8"	U
v ₃₀ (E)	90	#9	12'-10"	—
v ₃₁ (E)	110	#5	4'-10"	—
v ₃₂ (E)	90	#11	29'-4"	—
Bar Splicer	Each		42	
Structure Excavation	Cu. Yd.		63.8	
Concrete Structures	Cu. Yd.		106.4	
Reinforcement Bars	Pound		2,740	
Reinforcement Bars, Epoxy Coated	Pound		30,440	
Bridge Seat Sealer	Sq. Ft.		250	
Drilled Shaft in Soil 48"	Foot		89.5	
Drilled Shaft in Rock 42"	Foot		18.0	

Notes:

Reinforcement Bars designated (E) shall be epoxy coated.
Length of Spiral given is height of Spiral.
Weight includes weight of spacers for Spiral.

Drilled Shafts shall be drilled to Elevation 579.30.
Quantities and Detailing are for the estimated Elevations shown on the Plans.
The actual conditions encountered in each Shaft may differ and the Drilled Shaft and Reinforcement Quantities shall be adjusted accordingly as directed by the Engineer and paid for at the corresponding Unit Bid Price.

PIER			Sheet No.
Date 3/27/06	Designed DCS	CN RAILROAD BRIDGE OVER U.S. 6 (159TH STREET) F.A.P. RTE. 351 SECTION 3277R COOK COUNTY STATION 92+24.25 STRUCTURE NO. 016-2754	26 of 30
Revisions	Drawn BKN		
	Checked TDN		
	Approved KWB		
Prepared By:	3040 N. University Ave., Suite 1 Decatur, IL.		URS Job No. 36430825