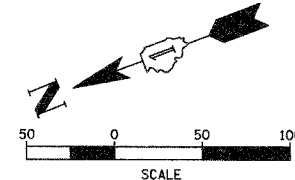


ROUTE NO.	SECTION	COUNTY	TOTAL SHEETS	SHEET NO.
F.A.P. 351	3277R	COOK	66	52
STA. 493+11.33		TO STA. 503+00.00		
FED. ROAD DIST. NO. 7		ILLINOIS		

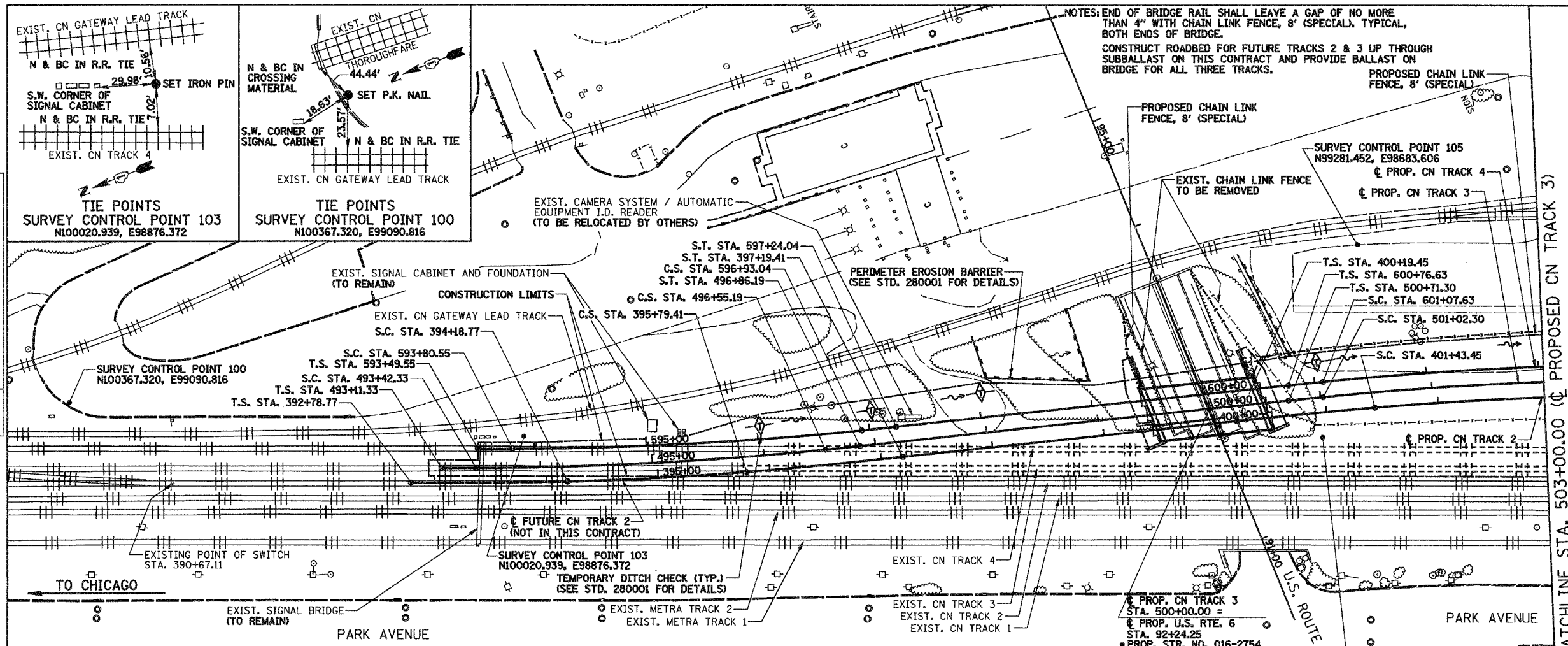
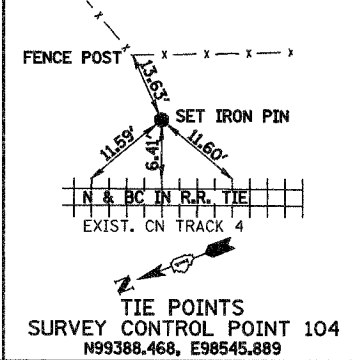
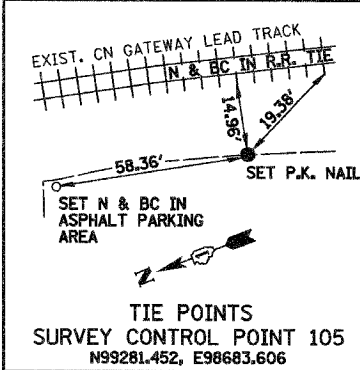
CONTRACT NO. 62206



LEGEND

- PROPOSED TRACK
- FUTURE TRACK BY OTHERS
- +--+ EXISTING TRACK TO BE REMOVED (SEE STAGING PLAN)
- ||| EXISTING TRACK
- +--+ PROPOSED CHAIN LINK FENCE, 8' (SPECIAL)
- +--+ PERIMETER EROSION BARRIER
- ◇ TEMPORARY DITCH CHECK
- DITCH FLOW ARROW

TO CHAMPAIGN →



- SEEDING, CLASS 2A**
(AREA WITHIN TRACK CONSTRUCTION LIMITS EXCLUDING AREA OCCUPIED BY SUBBALLAST)
STA. 493+00 TO STA. 503+00 = 0.3 ACRES
- NITROGEN FERTILIZER NUTRIENT**
STA. 493+00 TO STA. 503+00 = 27 POUNDS
- PHOSPHORUS FERTILIZER NUTRIENT**
STA. 493+00 TO STA. 503+00 = 27 POUNDS
- POTASSIUM FERTILIZER NUTRIENT**
STA. 493+00 TO STA. 503+00 = 27 POUNDS

- EROSION CONTROL BLANKET**
STA. 493+00 TO STA. 503+00 = 4840 SQ YD
(USE ON ALL SEEDED AREAS)
- TEMPORARY EROSION CONTROL SEEDING**
STA. 493+00 TO STA. 503+00 = 30 POUNDS
- EARTH EXCAVATION FOR EROSION CONTROL**
STA. 493+00 TO STA. 503+00 = 38 CU. YDS.
- PERIMETER EROSION BARRIER**
STA. 493+00 TO STA. 503+00 = 200 FOOT
(CONSTRUCT AS SHOWN, LAYOUT MAY VARY AT THE DIRECTION OF THE ENGINEER.)

- TEMPORARY DITCH CHECK**
STA. 496+00, LT. = 1 EACH
STA. 497+00, LT. = 1 EACH
STA. 498+00, LT. = 1 EACH
STA. 501+00, LT. = 1 EACH
STA. 502+00, RT. = 1 EACH
TOTAL = 5 EACH
- CHAIN LINK FENCE, 8' (SPECIAL)**
(SEE GENERAL NOTES, SHT. 1 OF 15)
STA. 499+32, 90' LT. TO STA. 499+40, 25' LT. = 67 FOOT
STA. 499+96, 126' LT. TO STA. 503+00, 45' LT. = 380 FOOT
TOTAL = 447 FOOT

- CHAIN LINK FENCE REMOVAL**
STA. 499+34, 90' LT. TO STA. 499+65, 10' RT. = 105 FOOT
STA. 500+11, 106' LT. TO STA. 503+00, 33' RT. = 358 FOOT
TOTAL = 463 FOOT

CURVE DATA - PROPOSED CN TRACK 2

CURVE 1	CURVE 2
P.I. STA. 394+99.11 N99932.98, E98787.48 Δ = 3° 12' 46" (LT) D = 2° 00' 00" T = 80.34' R = 2,864.93' L = 160.64' E = 1.13' S.E. = 2 1/4" S.L. = 140.00' T.S. STA. 392+78.77 N100129.79, E98886.53 S.C. STA. 394+18.77 N100005.12, E98822.85 C.S. STA. 395+79.41 N99858.97, E98756.20 S.T. STA. 397+19.41 N99729.15, E98703.81	P.I. STA. 404+25.80 N99074.24, E98439.13 Δ = 9° 51' 27" (RT) D = 1° 45' 00" T = 282.35' R = 3,274.17' L = 563.29' E = 12.15' S.E. = 2" S.L. = 124.00' T.S. STA. 400+19.45 N99450.00, E98593.80 S.C. STA. 401+43.45 N99334.93, E98547.61 C.S. STA. 407+06.74 N98835.98, E98287.62 S.T. STA. 408+30.74 N98732.20, E98219.77

CURVE DATA - PROPOSED CN TRACK 3

CURVE 1	CURVE 2
P.I. STA. 494+98.88 N99932.94, E98799.48 Δ = 5° 28' 30" (LT) D = 1° 45' 00" T = 156.56' R = 3,274.17' L = 312.86' E = 3.74' S.E. = 1/2" S.L. = 31.00' T.S. STA. 493+11.33 N100099.63, E98885.46 S.C. STA. 493+42.33 N100072.11, E98871.18 C.S. STA. 496+55.19 N99787.56, E98741.39 S.T. STA. 496+86.19 N99758.74, E98729.98	P.I. STA. 504+31.56 N99065.87, E98455.20 Δ = 11° 29' 06" (RT) D = 1° 45' 00" T = 329.26' R = 3,274.17' L = 656.28' E = 16.51' S.E. = 1/2" S.L. = 31.00' T.S. STA. 500+71.30 N99400.45, E98588.78 S.C. STA. 501+02.30 N99371.62, E98577.37 C.S. STA. 507+58.58 N98790.57, E98274.59 S.T. STA. 507+89.58 N98764.70, E98257.51

CURVE DATA - PROPOSED CN TRACK 4

CURVE 1	CURVE 2
P.I. STA. 595+36.92 N99896.24, E98799.53 Δ = 5° 28' 07" (LT) D = 1° 45' 00" T = 156.37' R = 3,274.17' L = 312.49' E = 3.73' S.E. = 1/2" S.L. = 31.00' T.S. STA. 593+49.55 N100062.77, E98885.40 S.C. STA. 593+80.55 N100035.25, E98871.12 C.S. STA. 596+93.04 N99751.03, E98741.51 S.T. STA. 597+24.04 N99722.21, E98730.10	P.I. STA. 604+36.89 N99059.60, E98467.24 Δ = 11° 29' 06" (RT) D = 1° 45' 00" T = 329.26' R = 3,274.17' L = 656.29' E = 16.51' S.E. = 1/2" S.L. = 31.00' T.S. STA. 600+76.63 N99394.18, E98600.82 S.C. STA. 601+07.63 N99365.35, E98589.41 C.S. STA. 607+63.91 N98784.29, E98286.63 S.T. STA. 607+94.91 N98758.42, E98269.55

BENCHMARK:
SET "X" CUT ON WALK AT THE SOUTHEASTERLY CORNER OF THE R.R. BRIDGE PIER IN THE CENTERLINE OF 159TH STREET AT THE EAST FACE OF THE BRIDGE, APPROXIMATELY 98 FEET WEST OF CENTER AVE. ELEV. 603.25

REVISIONS	
NAME	DATE

ILLINOIS DEPARTMENT OF TRANSPORTATION
CN RAILROAD OVER
U.S. 6 (159TH STREET)
F.A.P. RTE. 351 SECTION 3277R
**TRACK CONSTRUCTION
GENERAL PLAN**
SHT. 2 OF 15
DATE 3/27/06
DRAWN BY REZ
CHECKED BY RMS

DATE: _____
BY: _____
CHECKED: _____
DATE: _____
BY: _____
DATE: _____
BY: _____