

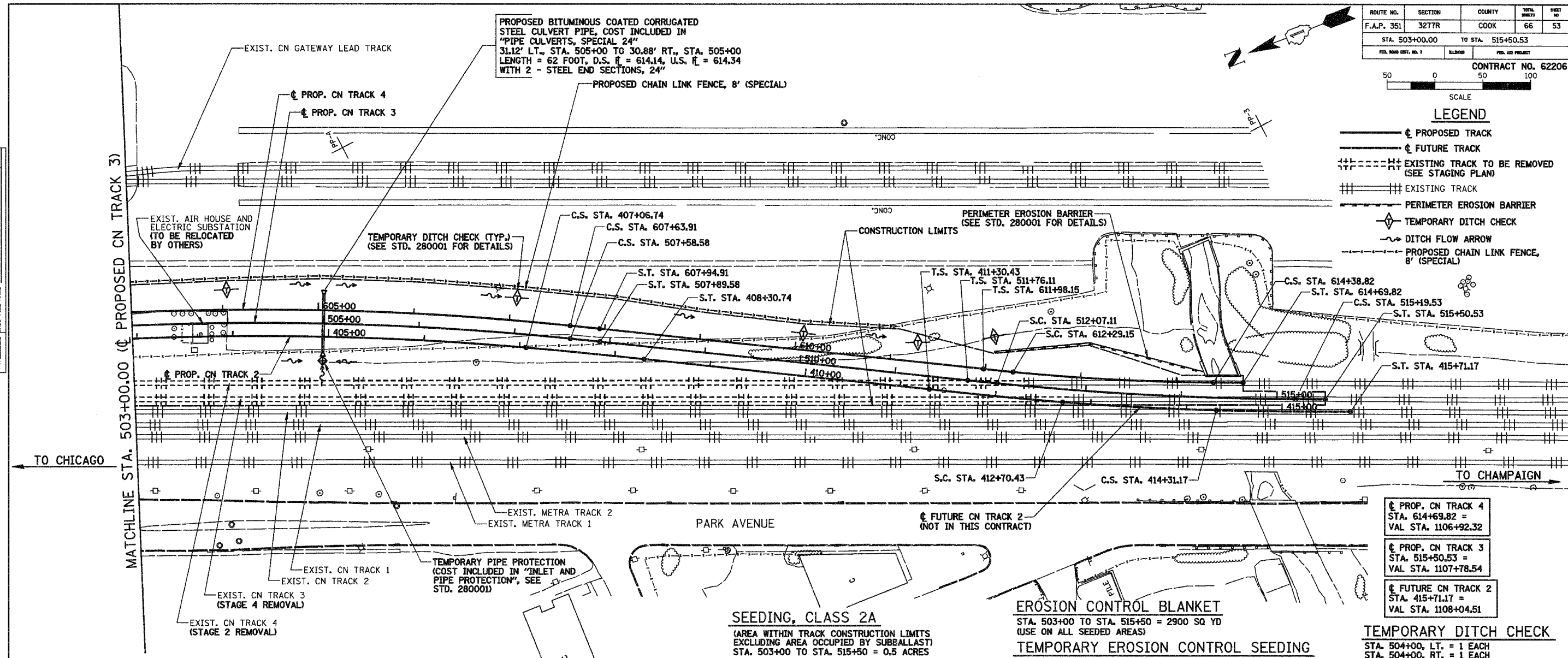
| ROUTE NO.                        | SECTION | COUNTY | TOTAL SHEETS            | SHEET NO. |
|----------------------------------|---------|--------|-------------------------|-----------|
| F.A.P. 351                       | 3277R   | COOK   | 66                      | 53        |
| STA. 503+00.00 TO STA. 515+50.53 |         |        |                         |           |
| F.I.L. 3000 (REV. 11-7)          |         | BLANK  | F.I.L. 3000 (REV. 11-7) |           |

CONTRACT NO. 62206  
 SCALE  
 0 50 100

**LEGEND**

- PROPOSED TRACK
- FUTURE TRACK
- EXISTING TRACK TO BE REMOVED (SEE STAGING PLAN)
- EXISTING TRACK
- - - PERIMETER EROSION BARRIER
- ◇ TEMPORARY DITCH CHECK
- DITCH FLOW ARROW
- - - PROPOSED CHAIN LINK FENCE, 8' (SPECIAL)

|           |  |
|-----------|--|
| DATE      |  |
| BY        |  |
| REVISIONS |  |
| PLANNED   |  |
| NOTED     |  |
| CHECKED   |  |
| DATE      |  |
| FILE NAME |  |



**BENCHMARK:**  
 SET "X" CUT ON WALK AT THE SOUTHEASTERLY CORNER OF THE R.R. BRIDGE PIER IN THE CENTERLINE OF 159TH STREET AT THE EAST FACE OF THE BRIDGE, APPROXIMATELY 98 FEET WEST OF CENTER AVE.  
 ELEV. 603.25

**CHAIN LINK FENCE, 8' (SPECIAL)**  
 (SEE GENERAL NOTES, SHT. 1 OF 15)  
 STA. 503+00, 45' LT. TO STA. 510+99, 49' LT. = 801 FOOT

**CHAIN LINK FENCE REMOVAL**  
 STA. 503+00, 33' RT. TO STA. 510+99, 49' LT. = 799 FOOT

**SEEDING, CLASS 2A**  
 (AREA WITHIN TRACK CONSTRUCTION LIMITS EXCLUDING AREA OCCUPIED BY SUBBALLAST)  
 STA. 503+00 TO STA. 515+50 = 0.5 ACRES

**NITROGEN FERTILIZER NUTRIENT**  
 STA. 503+00 TO STA. 515+50 = 45 POUNDS

**PHOSPHORUS FERTILIZER NUTRIENT**  
 STA. 503+00 TO STA. 515+50 = 45 POUNDS

**POTASSIUM FERTILIZER NUTRIENT**  
 STA. 503+00 TO STA. 515+50 = 45 POUNDS

**EROSION CONTROL BLANKET**  
 STA. 503+00 TO STA. 515+50 = 2900 SQ YD  
 (USE ON ALL SEEDED AREAS)

**TEMPORARY EROSION CONTROL SEEDING**  
 STA. 503+00 TO STA. 515+50 = 50 POUNDS

**EARTH EXCAVATION FOR EROSION CONTROL**  
 STA. 503+00 TO STA. 515+50 = 62 CU. YDS.

**PERIMETER EROSION BARRIER**  
 STA. 503+00 TO STA. 515+50 = 222 FOOT  
 (CONSTRUCT AS SHOWN, LAYOUT MAY VARY AT THE DIRECTION OF THE ENGINEER.)

**INLET AND PIPE PROTECTION**  
 STA. 505+00, 33' RT. = 1 EACH

**TEMPORARY DITCH CHECK**  
 STA. 504+00, LT. = 1 EACH  
 STA. 504+00, RT. = 1 EACH  
 STA. 506+00, RT. = 1 EACH  
 STA. 507+00, LT. = 1 EACH  
 STA. 507+50, RT. = 1 EACH  
 STA. 510+00, LT. = 1 EACH  
 STA. 511+20, LT. = 1 EACH  
 STA. 512+00, LT. = 1 EACH  
 TOTAL = 8 EACH

**CURVE DATA - PROPOSED CN TRACK 2**

| CURVE 2                          | CURVE 3                          |
|----------------------------------|----------------------------------|
| P.I. STA. 404+25.80              | P.I. STA. 413+50.82              |
| N99074.24, E98439.13             | N98297.00, E97935.04             |
| $\Delta = 9^\circ 51' 27''$ (RT) | $\Delta = 3^\circ 12' 53''$ (LT) |
| D = 1° 45' 00"                   | D = 2° 00' 00"                   |
| T = 282.35'                      | T = 80.40'                       |
| R = 3,274.17'                    | R = 2,864.93'                    |
| L = 563.29'                      | L = 160.74'                      |
| E = 12.15'                       | E = 1.13'                        |
| S.E. = 2"                        | S.E. = 2 1/4"                    |
| S.L. = 124.00'                   | S.L. = 140.00'                   |
| T.S. STA. 400+19.45              | T.S. STA. 411+30.43              |
| N99450.00, E98593.80             | N98482.40, E98054.20             |
| S.C. STA. 401+43.45              | S.C. STA. 412+70.43              |
| N99334.93, E98547.61             | N98365.08, E97977.81             |
| C.S. STA. 407+06.74              | C.S. STA. 414+31.17              |
| N98835.98, E98287.62             | N98226.64, E97896.16             |
| S.T. STA. 408+30.74              | S.T. STA. 415+71.17              |
| N98732.20, E98219.77             | N98103.01, E97830.46             |

**CURVE DATA - PROPOSED CN TRACK 3**

| CURVE 2                           | CURVE 3                          |
|-----------------------------------|----------------------------------|
| P.I. STA. 504+31.56               | P.I. STA. 513+63.44              |
| N99065.87, E98455.20              | N98285.93, E97941.12             |
| $\Delta = 11^\circ 29' 06''$ (RT) | $\Delta = 5^\circ 28' 02''$ (LT) |
| D = 1° 45' 00"                    | D = 1° 45' 00"                   |
| T = 329.26'                       | T = 156.33'                      |
| R = 3,274.17'                     | R = 3,274.17'                    |
| L = 656.28'                       | L = 312.42'                      |
| E = 16.51'                        | E = 3.73'                        |
| S.E. = 1/2"                       | S.E. = 1/2"                      |
| S.L. = 31.00'                     | S.L. = 31.00'                    |
| T.S. STA. 500+71.30               | T.S. STA. 511+76.11              |
| N99400.45, E98588.78              | N98442.52, E98043.96             |
| S.C. STA. 501+02.30               | S.C. STA. 512+07.11              |
| N99371.62, E98577.37              | N98416.65, 98026.88              |
| C.S. STA. 507+58.58               | C.S. STA. 515+19.53              |
| N98790.57, E98274.59              | N98147.64, E97868.22             |
| S.T. STA. 507+89.58               | S.T. STA. 515+50.53              |
| N98764.70, E98257.51              | N98120.17, E97853.85             |

**CURVE DATA - PROPOSED CN TRACK 4**

| CURVE 2                           | CURVE 3                          |
|-----------------------------------|----------------------------------|
| P.I. STA. 604+36.89               | P.I. STA. 613+34.06              |
| N99059.60, E98467.24              | N98308.60, E97972.33             |
| $\Delta = 11^\circ 29' 06''$ (RT) | $\Delta = 5^\circ 14' 30''$ (LT) |
| D = 1° 45' 00"                    | D = 2° 30' 00"                   |
| T = 329.26'                       | T = 104.91'                      |
| R = 3,274.17'                     | R = 2,292.01'                    |
| L = 656.29'                       | L = 209.66'                      |
| E = 16.51'                        | E = 2.40'                        |
| S.E. = 1/2"                       | S.E. = 1/2"                      |
| S.L. = 31.00'                     | S.L. = 31.00'                    |
| T.S. STA. 600+76.63               | T.S. STA. 611+98.15              |
| N99394.18, E98600.82              | N98422.31, E98046.77             |
| S.C. STA. 601+07.63               | S.C. STA. 612+29.15              |
| N99365.35, E98589.41              | N98396.44, E98029.70             |
| C.S. STA. 607+63.91               | C.S. STA. 614+38.82              |
| N98784.29, E98286.63              | N98215.88, E97923.23             |
| S.T. STA. 607+94.91               | S.T. STA. 614+69.82              |
| N98758.42, E98269.55              | N98188.42, E97908.84             |

| REVISIONS |      |
|-----------|------|
| NAME      | DATE |
|           |      |
|           |      |
|           |      |
|           |      |
|           |      |

ILLINOIS DEPARTMENT OF TRANSPORTATION  
 CN RAILROAD OVER  
 U.S. 6 (159TH STREET)  
 F.A.P. RTE. 351 SECTION 3277R

**TRACK CONSTRUCTION GENERAL PLAN**

SHT. 3 OF 15  
 DATE 3/27/06

DRAWN BY REZ  
 CHECKED BY RMS