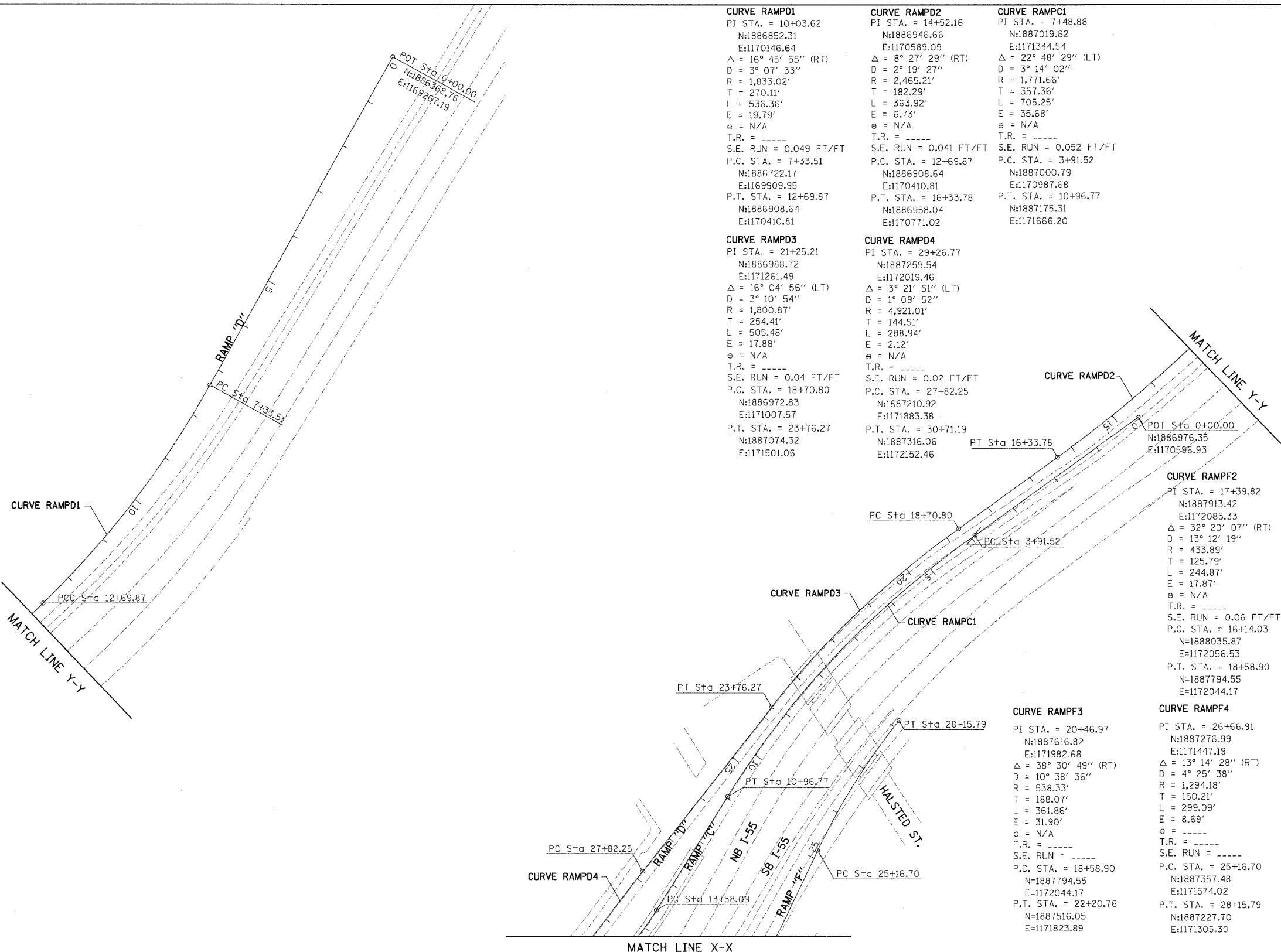


F.A.I.	SECTION	COUNTY	TOTAL SHEETS	SHEET NO.
94/90	2003-0298	COOK	344	17
STA.		TO STA.		
FED. ROAD DIST. NO.		ILLINOIS FED. AID PROJECT		

62581



CURVE RAMPD1
 PI STA. = 10+03.62
 N:1886852.31
 E:1170146.64
 $\Delta = 16^\circ 45' 55''$ (RT)
 D = 3° 07' 33"
 R = 1,833.02'
 T = 270.11'
 L = 536.36'
 E = 19.79'
 e = N/A
 T.R. = ----
 S.E. RUN = 0.049 FT/FT
 P.C. STA. = 7+33.51
 N:1886722.17
 E:1169909.95
 P.T. STA. = 12+69.87
 N:1886908.64
 E:1170410.81

CURVE RAMPD2
 PI STA. = 14+52.16
 N:1886946.66
 E:1170589.09
 $\Delta = 8^\circ 27' 29''$ (RT)
 D = 2° 19' 27"
 R = 2,465.21'
 T = 182.29'
 L = 363.92'
 E = 6.73'
 e = N/A
 T.R. = ----
 S.E. RUN = 0.041 FT/FT
 P.C. STA. = 12+69.87
 N:1886908.64
 E:1170410.81
 P.T. STA. = 16+33.78
 N:1886958.04
 E:1170771.02

CURVE RAMPD3
 PI STA. = 21+25.21
 N:1886988.72
 E:1171261.49
 $\Delta = 16^\circ 04' 56''$ (LT)
 D = 3° 10' 54"
 R = 1,800.87'
 T = 254.41'
 L = 505.48'
 E = 17.88'
 e = N/A
 T.R. = ----
 S.E. RUN = 0.04 FT/FT
 P.C. STA. = 18+70.80
 N:1886972.83
 E:1171007.57
 P.T. STA. = 23+76.27
 N:1887074.32
 E:1171501.06

CURVE RAMPD4
 PI STA. = 29+26.77
 N:1887259.54
 E:1172019.46
 $\Delta = 3^\circ 21' 51''$ (LT)
 D = 1° 09' 52"
 R = 4,921.01'
 T = 144.51'
 L = 288.94'
 E = 2.12'
 e = N/A
 T.R. = ----
 S.E. RUN = 0.02 FT/FT
 P.C. STA. = 27+82.25
 N:1887210.92
 E:1171883.38
 P.T. STA. = 30+71.19
 N:1887316.06
 E:1172152.46

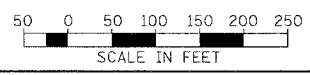
CURVE RAMPF1
 PI STA. = 7+48.88
 N:1887019.62
 E:1171344.54
 $\Delta = 22^\circ 48' 29''$ (LT)
 D = 3° 14' 02"
 R = 1,771.66'
 T = 357.36'
 L = 705.25'
 E = 35.68'
 e = N/A
 T.R. = ----
 S.E. RUN = 0.052 FT/FT
 P.C. STA. = 3+91.52
 N:1887000.79
 E:1170987.68
 P.T. STA. = 10+96.77
 N:1887175.31
 E:1171666.20

CURVE RAMPF2
 PI STA. = 17+39.82
 N:1887913.42
 E:1172085.33
 $\Delta = 32^\circ 20' 07''$ (RT)
 D = 13° 12' 19"
 R = 433.89'
 T = 125.79'
 L = 244.87'
 E = 17.87'
 e = N/A
 T.R. = ----
 S.E. RUN = 0.06 FT/FT
 P.C. STA. = 16+14.03
 N:1888035.87
 E:1172056.53
 P.T. STA. = 18+58.90
 N:1887794.55
 E:1172044.17

CURVE RAMPF3
 PI STA. = 20+46.97
 N:1887616.82
 E:1171982.68
 $\Delta = 38^\circ 30' 49''$ (RT)
 D = 10° 38' 36"
 R = 538.33'
 T = 188.07'
 L = 361.86'
 E = 31.90'
 e = N/A
 T.R. = ----
 S.E. RUN = ----
 P.C. STA. = 18+58.90
 N:1887794.55
 E:1172044.17
 P.T. STA. = 22+20.76
 N:1887516.05
 E:1171823.89

CURVE RAMPF4
 PI STA. = 26+66.91
 N:1887276.99
 E:1171447.19
 $\Delta = 13^\circ 14' 28''$ (RT)
 D = 4° 25' 38"
 R = 1,294.18'
 T = 150.21'
 L = 299.09'
 E = 8.69'
 e = ----
 T.R. = ----
 S.E. RUN = ----
 P.C. STA. = 25+16.70
 N:1887357.48
 E:1171574.02
 P.T. STA. = 28+15.79
 N:1887227.70
 E:1171305.30

BOWMAN, BARRETT & ASSOCIATES INC.
 CONSULTING ENGINEERS
 Chicago, Illinois
 312.228.0100
 www.bbainc.com



REVISIONS	
NAME	DATE

ILLINOIS DEPARTMENT OF TRANSPORTATION
 F.A.I. 94/90 (DAN RYAN EXPRESSWAY)
 SB DAN RYAN ELEVATED BRIDGE
 REPAIR FROM 15TH TO 28TH STREETS
 ALIGNMENT PLAN
 STA. 99+94 TO STA. 125+39

SCALE: 1"=100'
 DATE: 4/14/2006

DRAWN BY: RA
 CHECKED BY: RS

CAL04
 9:50:56 AM
 4/14/2006