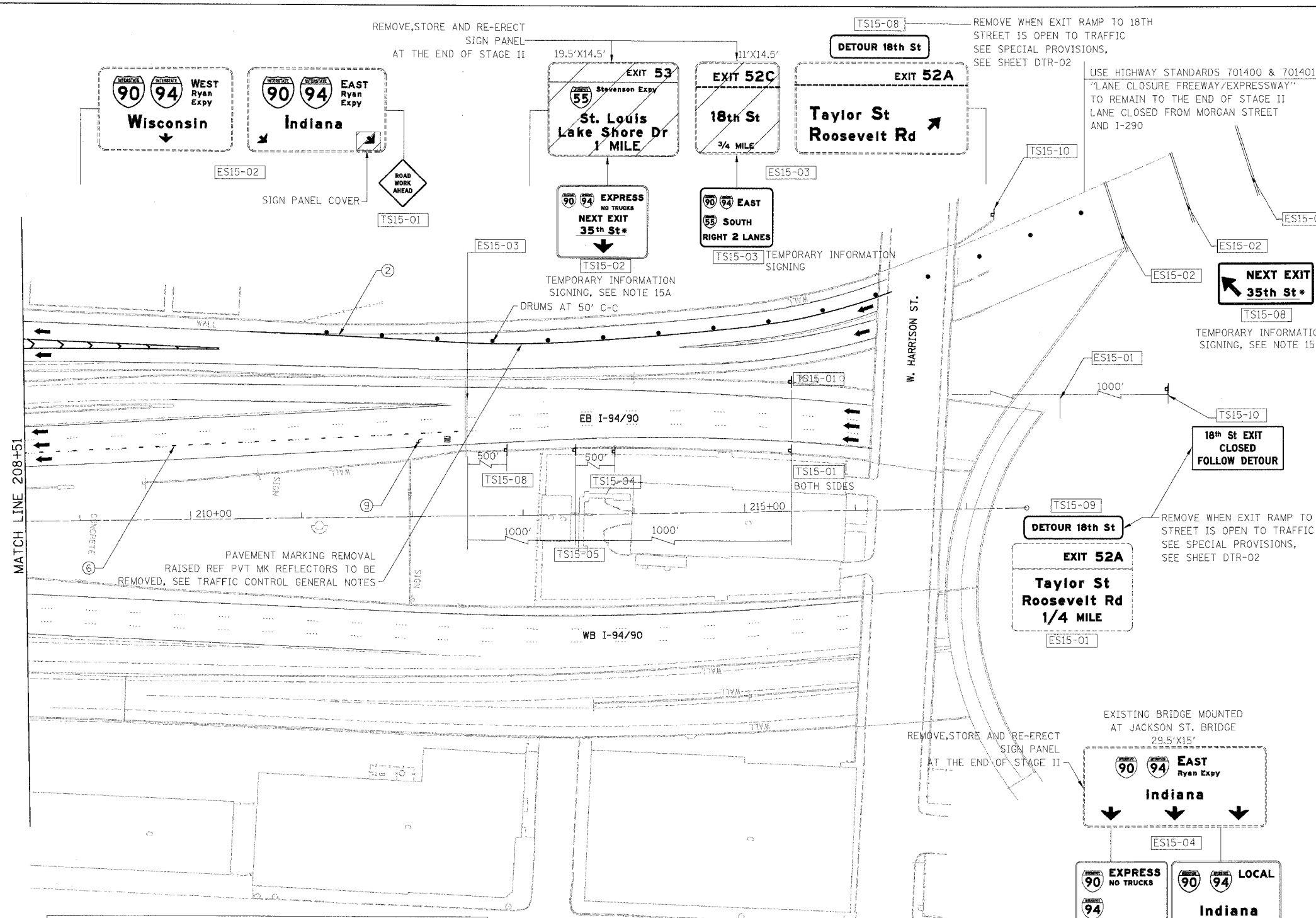


F.A.I.	SECTION	COUNTY	TOTAL SHEETS	SHEET NO.
94/90	2003-0291	COOK	344	45
STA. 208+51		TO STA. 208+51		
FED. ROAD DIST. NO.		ILLINOIS FED. AID PROJECT		
62581				



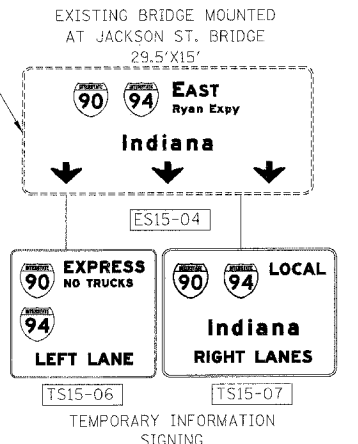
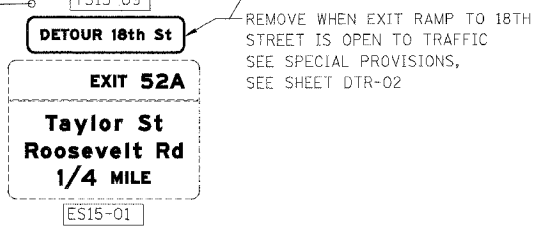
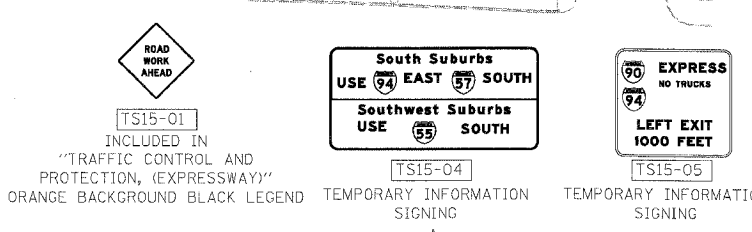
- LEGEND**
- WORK ZONE
 - DIRECTION OF TRAFFIC
 - DRUM OR BARRICADE TYPE II WITH STEADY BURN LIGHT
 - IMPACT ATTENUATORS, TEMPORARY (NON-REDIRECTIVE), TEST LEVEL 3
 - BARRICADE TYPE III
 - TEMPORARY CONCRETE BARRIER
 - LINE 4" (YELLOW EDGE LINE)
 - LINE 4" (WHITE EDGE LINE)
 - LINE 4" (SKIP DASH, 6' SKIP - 2' DASH, WHITE)
 - LINE 5" (SKIP DASH, 30' SKIP - 10' DASH, WHITE)
 - LINE 8" (WHITE LINE)
 - LINE 8" (SKIP DASH, 12' SKIP - 3' DASH, WHITE)
 - LINE 12" (DIAGONAL, 30' C-C)
 - LINE 12" (DIAGONAL, 500' C-C)
 - LETTERS AND SYMBOLS
 - EXISTING OVERHEAD OR CANTILEVER SIGNS
 - EXISTING POST MOUNTED SIGNS
 - TEMPORARY SIGNS

NOTE:

EB I-94/90 TEMPORARY INFORMATION SIGNING, PANEL COVERING AND PANEL REPLACING TO BE REMOVED AT END OF STAGE II, UNLESS OTHERWISE SPECIFIED

EB I-94/90 TEMPORARY PAVEMENT MARKINGS INSTALLED IN SUBSTAGE IA TO REMAIN TO THE END OF SUBSTAGE IC, UNLESS OTHERWISE SPECIFIED

15A. IMPORTANT TO COORDINATE NEXT EXIT STREET NAME WITH CONTRACT 62303 THIS CONTRACT 62581 IS RESPONSIBLE FOR THE TEMPORARY SIGNING

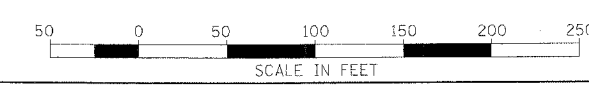


NOTE:

ALL PAVEMENT MARKINGS ON THIS SHEET WILL BE EPOXY PAVEMENT MARKING, UNLESS OTHERWISE NOTED.

MOT-15

REVISIONS		ILLINOIS DEPARTMENT OF TRANSPORTATION F.A.I. 94/90 (DAN RYAN EXPRESSWAY) SB DAN RYAN ELEVATED BRIDGE REPAIR FROM 15TH TO 28TH STREETS MAINTENANCE OF TRAFFIC PLAN - SUBSTAGE IA STA. 208+51 TO STA.
NAME	DATE	
		SCALE: 1"=50' DATE: 5/12/2006 DRAWN BY: RA CHECKED BY: RS



BOWMAN, BARRETT & ASSOCIATES INC.
CONSULTING ENGINEERS
Chicago, Illinois
312.228.0100
www.bbainc.com

5/12/2006 9:46:25 AM