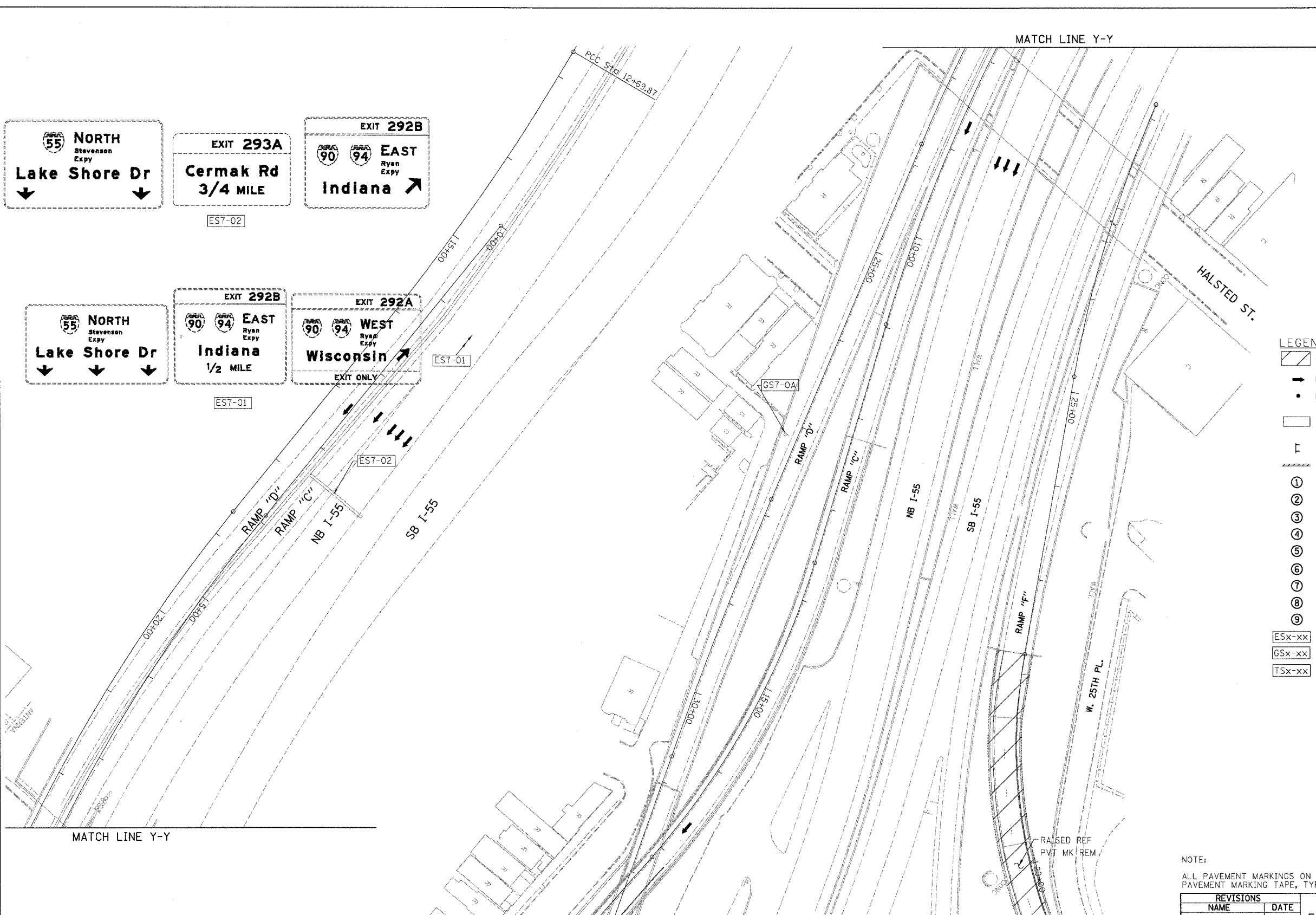
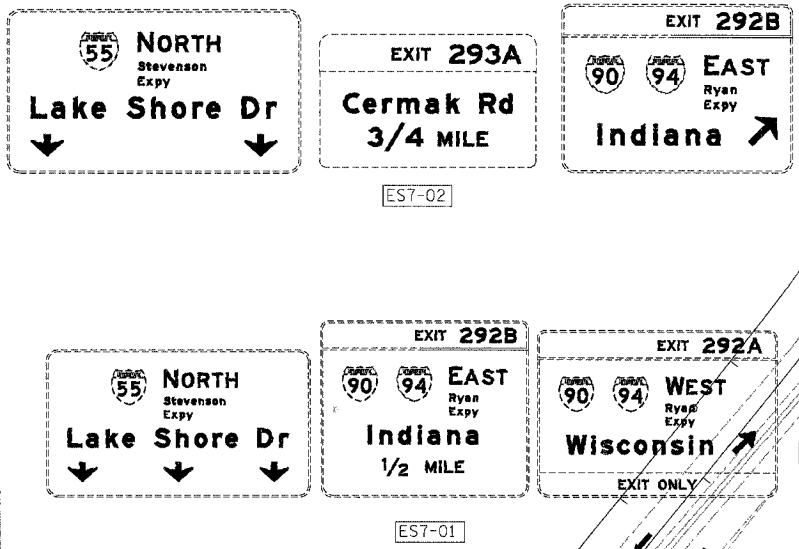


F.A.I.	SECTION	COUNTY	TOTAL SHEETS	SHEET NO.
94/90	2003-0295	COOK	344	52
STA. 62581		TO STA.		
FED. ROAD DIST. NO.		ILLINOIS	FED. AID PROJECT	



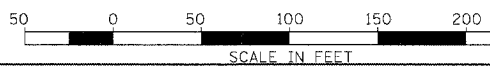
- LEGEND**
- WORK ZONE
 - DIRECTION OF TRAFFIC
 - DRUM OR BARRICADE TYPE II WITH STEADY BURN LIGHT
 - IMPACT ATTENUATORS, TEMPORARY (NON-REDIRECTIVE), TEST LEVEL 3
 - BARRICADE TYPE III
 - TEMPORARY CONCRETE BARRIER
 - ① LINE 4" (YELLOW EDGE LINE)
 - ② LINE 4" (WHITE EDGE LINE)
 - ③ LINE 4" (SKIP DASH, 6' SKIP - 2' DASH, WHITE)
 - ④ LINE 5" (SKIP DASH, 30' SKIP - 10' DASH, WHITE)
 - ⑤ LINE 8" (WHITE LINE)
 - ⑥ LINE 8" (SKIP DASH, 12' SKIP - 3' DASH, WHITE)
 - ⑦ LINE 12" (DIAGONAL, 30' C-C)
 - ⑧ LINE 12" (DIAGONAL, 500' C-C)
 - ⑨ LETTERS AND SYMBOLS
 - ESx-xx EXISTING OVERHEAD OR CANTILEVER SIGNS
 - GSx-xx EXISTING POST MOUNTED SIGNS
 - TSx-xx TEMPORARY SIGNS

NOTE:
ALL PAVEMENT MARKINGS ON THIS SHEET WILL BE PAVEMENT MARKING TAPE, TYPE III, UNLESS OTHERWISE NOTED. MOT-22

REVISIONS	
NAME	DATE

ILLINOIS DEPARTMENT OF TRANSPORTATION
 F.A.I. 94/90 (DAN RYAN EXPRESSWAY)
 SB DAN RYAN ELEVATED BRIDGE
 REPAIR FROM 15TH TO 28TH STREETS
 MAINTENANCE OF TRAFFIC PLAN - SUBSTAGE IB
 STA. 62581 TO STA. 62581

SCALE: 1"= 50'
 DATE: 4/14/2006
 DRAWN BY: RA
 CHECKED BY: RS



BOWMAN, BARRETT & ASSOCIATES INC.
 CONSULTING ENGINEERS
 Chicago, Illinois
 312.228.0100
 www.bbainc.com

4/14/2006 10:02:24 AM