

F.A.I.	SECTION	COUNTY	TOTAL SHEETS	SHEET NO.
94/90	2003-0290	COOK	344	73
STA.	TO STA.			
FED. ROAD DIST. NO.	ILLINOIS FED. AID PROJECT			
62581				

U.s. Cellular Field  
TOURIST INFO  
Turn Radio To  
1620 AM

GS13-0A

EXIT 53  
Stevenson Expy  
St. Louis  
Lake Shore Dr  
1/2 MILE

EXIT 52C  
18th St  
1/4 MILE

ES13-03  
BRIDGE MOUNTED

W4-2

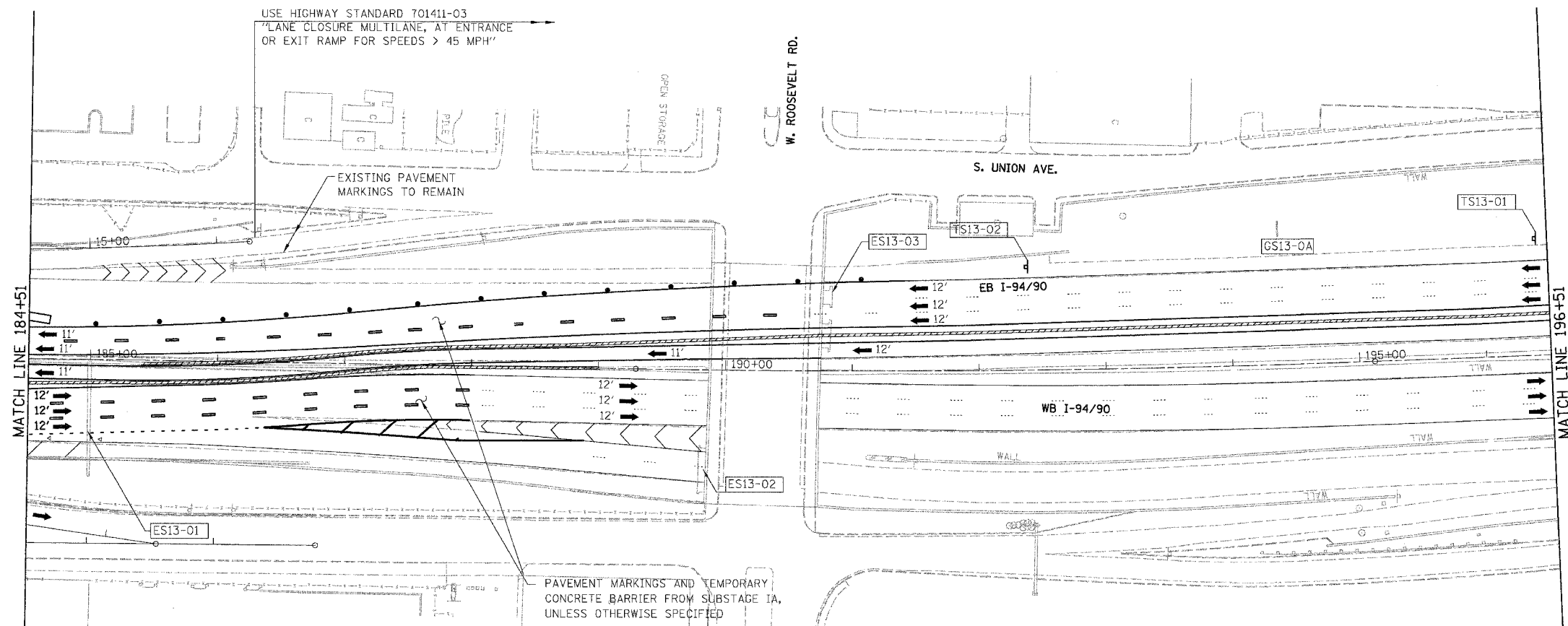
LANE END MERGE LEFT

W9-2

TS13-01

TS13-02

INCLUDED IN "TRAFFIC CONTROL AND PROTECTION "EXPRESSWAYS" FROM SUBSTAGE 1A



- LEGEND**
- WORK ZONE
  - DIRECTION OF TRAFFIC
  - DRUM OR BARRICADE TYPE II WITH STEADY BURN LIGHT
  - IMPACT ATTENUATORS, TEMPORARY (NON-REDIRECTIVE), TEST LEVEL 3
  - BARRICADE TYPE III
  - TEMPORARY CONCRETE BARRIER
  - ① LINE 4" (YELLOW EDGE LINE)
  - ② LINE 4" (WHITE EDGE LINE)
  - ③ LINE 4" (SKIP DASH, 6' SKIP - 2' DASH, WHITE)
  - ④ LINE 5" (SKIP DASH, 30' SKIP - 10' DASH, WHITE)
  - ⑤ LINE 8" (WHITE LINE)
  - ⑥ LINE 8" (SKIP DASH, 12' SKIP - 3' DASH, WHITE)
  - ⑦ LINE 12" (DIAGONAL, 30' C-C)
  - ⑧ LINE 12" (DIAGONAL, 500' C-C)
  - ⑨ LETTERS AND SYMBOLS
  - ESx-xx EXISTING OVERHEAD OR CANTILEVER SIGNS
  - GSx-xx EXISTING POST MOUNTED SIGNS
  - TSx-xx TEMPORARY SIGNS

WEST  
Kennedy Expy  
Wisconsin

SPEED LIMIT  
45

LEFT 2 LANES

TS13-04  
TEMPORARY INFORMATION SIGNING FROM SUBSTAGE 1A

EXIT 51H  
Eisenhower Expy  
West Suburbs  
Chicago Loop

ES13-01

SIGN PANEL COVER FROM SUBSTAGE 1A

SPEED LIMIT  
45

TS13-05  
TEMPORARY INFORMATION SIGNING FROM SUBSTAGE 1A

WEST  
Eisenhower Expy  
West Suburbs  
LEFT LANE

Congress Pkwy  
Chicago Loop  
RIGHT LANE

ES13-02  
BRIDGE MOUNTED

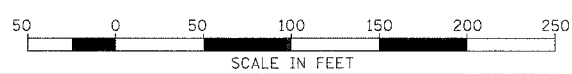
BOWMAN, BARRETT & ASSOCIATES INC  
CONSULTING ENGINEERS  
Chicago, Illinois  
312.228.0100  
www.bbainc.com

NOTE:  
ALL PAVEMENT MARKINGS ON THIS SHEET WILL BE PAVEMENT MARKING TAPE, TYPE III, UNLESS OTHERWISE NOTED.

REVISIONS	
NAME	DATE

ILLINOIS DEPARTMENT OF TRANSPORTATION  
F.A.I. 94/90 (DAN RYAN EXPRESSWAY)  
SB DAN RYAN ELEVATED BRIDGE  
REPAIR FROM 15TH TO 28TH STREETS  
MAINTENANCE OF TRAFFIC PLAN - SUBSTAGE 1C  
STA. 184+51 TO STA. 196+51

SCALE: 1"=50'  
DATE: 4/14/2006  
DRAWN BY: RA  
CHECKED BY: RS



4/14/2006 10:05:03 AM