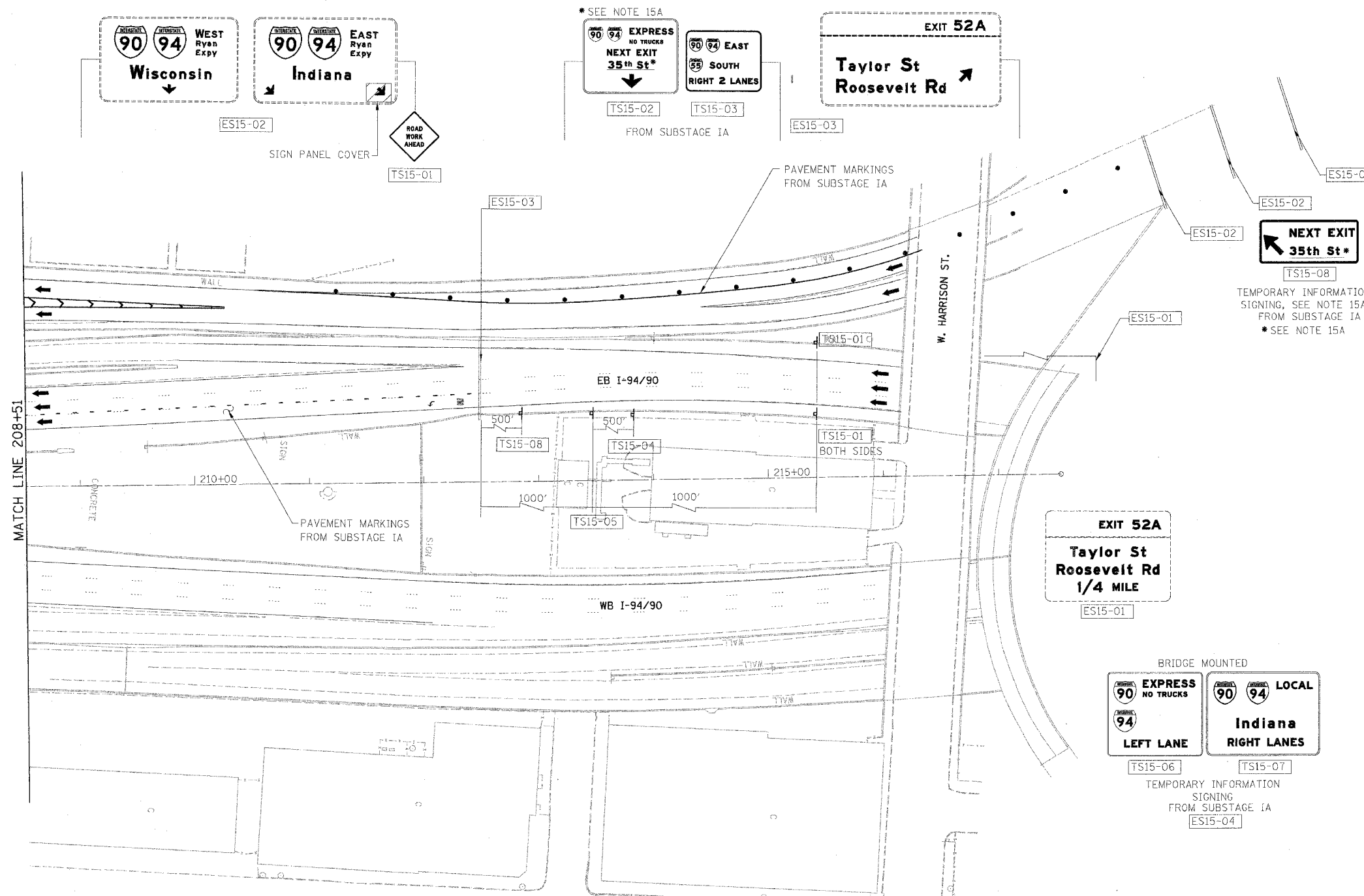


F.A.I.	SECTION	COUNTY	TOTAL SHEETS	SHEET NO.
94/90	2003-0291	COOK	344	75
STA.	TO STA.			
FED. ROAD DIST. NO.	ILLINOIS	FED. AID PROJECT		

62581



- LEGEND**
- WORK ZONE
 - DIRECTION OF TRAFFIC
 - DRUM OR BARRICADE TYPE II WITH STEADY BURN LIGHT
 - IMPACT ATTENUATORS, TEMPORARY (NON-REDIRECTIVE), TEST LEVEL 3
 - BARRICADE TYPE III
 - TEMPORARY CONCRETE BARRIER
 - ① LINE 4" (YELLOW EDGE LINE)
 - ② LINE 4" (WHITE EDGE LINE)
 - ③ LINE 4" (SKIP DASH, 6' SKIP - 2' DASH, WHITE)
 - ④ LINE 5" (SKIP DASH, 30' SKIP - 10' DASH, WHITE)
 - ⑤ LINE 8" (WHITE LINE)
 - ⑥ LINE 8" (SKIP DASH, 12' SKIP - 3' DASH, WHITE)
 - ⑦ LINE 12" (DIAGONAL, 30' C-C)
 - ⑧ LINE 12" (DIAGONAL, 500' C-C)
 - ⑨ LETTERS AND SYMBOLS
 - ESx-xx EXISTING OVERHEAD OR CANTILEVER SIGNS
 - GSx-xx EXISTING POST MOUNTED SIGNS
 - TSx-xx TEMPORARY SIGNS

MATCH LINE 208+51

15A. IMPORTANT TO COORDINATE NEXT EXIT STREET NAME WITH CONTRACT 62303 THIS CONTRACT 62581 IS RESPONSIBLE FOR THE TEMPORARY SIGNING

INCLUDED IN "TRAFFIC CONTROL AND PROTECTION, (EXPRESSWAY)" ORANGE BACKGROUND BLACK LEGEND FROM SUBSTAGE IA
 TS15-01
 TEMPORARY INFORMATION SIGNING FROM SUBSTAGE IA

SOUTH SUBURBS USE 94 EAST 57 SOUTH
 TS15-04
 TEMPORARY INFORMATION SIGNING FROM SUBSTAGE IA

EXPRESS NO TRUCKS
 TS15-05
 TEMPORARY INFORMATION SIGNING FROM SUBSTAGE IA

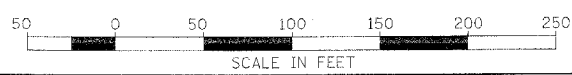
NOTE: ALL PAVEMENT MARKINGS ON THIS SHEET WILL BE PAVEMENT MARKING TAPE, TYPE III, UNLESS OTHERWISE NOTED. MOT-45

REVISIONS	
NAME	DATE

ILLINOIS DEPARTMENT OF TRANSPORTATION
 F.A.I. 94/90 (DAN RYAN EXPRESSWAY)
 SB DAN RYAN ELEVATED BRIDGE
 REPAIR FROM 15TH TO 28TH STREETS
 MAINTENANCE OF TRAFFIC PLAN - SUBSTAGE IC
 STA. 208+51 TO STA.

SCALE: 1"=50'
 DATE: 5/12/2006
 DRAWN BY: RA
 CHECKED BY: RS

BOWMAN, BARRETT & ASSOCIATES INC.
 CONSULTING ENGINEERS
 Chicago, Illinois
 312.228.0100
 www.boandainc.com



IN 660 CADD/CAD/PLT SHEETS 660_21MOT01C.dwg 10/25/06 5/12/2006