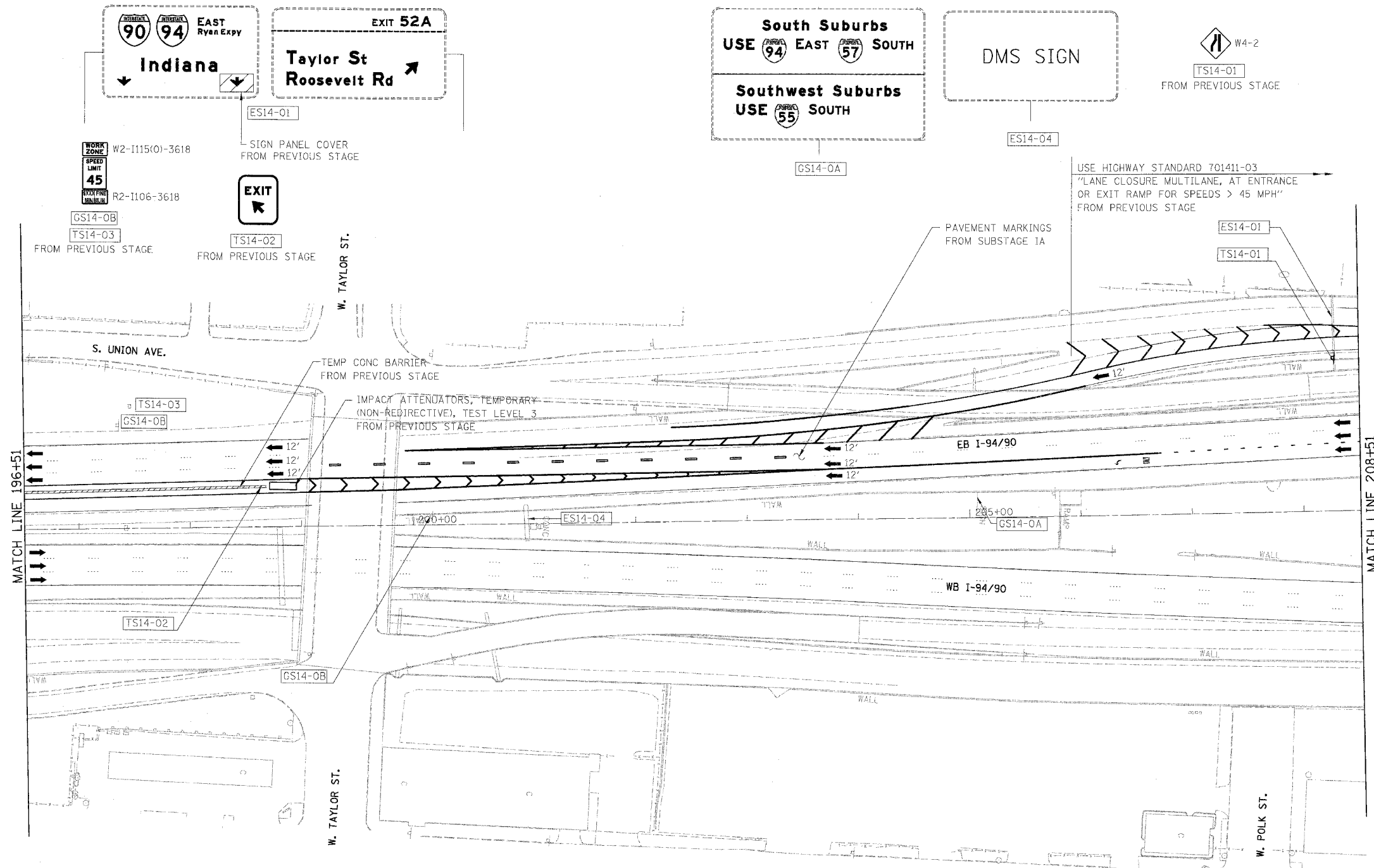


| | | | | |
|---------------------|-----------|----------------|------------------|-----------|
| F.A.I. | SECTION | COUNTY | TOTAL SHEETS | SHEET NO. |
| 94/90 | 2003-0291 | COOK | 344 | 89 |
| STA. 196+51 | | TO STA. 208+51 | | |
| FED. ROAD DIST. NO. | | ILLINOIS | FED. AID PROJECT | |
| 62581 | | | | |



LEGEND

- WORK ZONE
- DIRECTION OF TRAFFIC
- DRUM OR BARRICADE TYPE II WITH STEADY BURN LIGHT
- IMPACT ATTENUATORS, TEMPORARY (NON-REDIRECTIVE), TEST LEVEL 3
- BARRICADE TYPE III
- TEMPORARY CONCRETE BARRIER
- LINE 4" (YELLOW EDGE LINE)
- LINE 4" (WHITE EDGE LINE)
- LINE 4" (SKIP DASH, 6' SKIP - 2' DASH, WHITE)
- LINE 5" (SKIP DASH, 30' SKIP - 10' DASH, WHITE)
- LINE 8" (WHITE LINE)
- LINE 8" (SKIP DASH, 12' SKIP - 3' DASH, WHITE)
- LINE 12" (DIAGONAL, 30' C-C)
- LINE 12" (DIAGONAL, 500' C-C)
- LETTERS AND SYMBOLS
- EXISTING OVERHEAD OR CANTILEVER SIGNS
- EXISTING POST MOUNTED SIGNS
- TEMPORARY SIGNS

NOTE:
 EB I-94/90 TEMPORARY INFORMATION SIGNING, PANEL COVERING AND PANEL REPLACING, TEMPORARY CONCRETE BARRIER, TEMPORARY PAVEMENT MARKINGS WERE INSTALLED IN SUBSTAGE IA, UNLESS OTHERWISE SPECIFIED, TO BE REMOVED AT END OF THIS STAGE

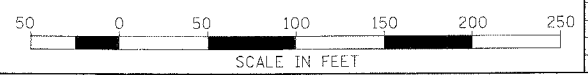
NOTE:
 ALL PAVEMENT MARKINGS ON THIS SHEET WILL BE PAVEMENT MARKING TAPE, TYPE III, UNLESS OTHERWISE NOTED. MOT-59

| REVISIONS | |
|-----------|------|
| NAME | DATE |
| | |
| | |
| | |
| | |
| | |
| | |
| | |
| | |
| | |
| | |

ILLINOIS DEPARTMENT OF TRANSPORTATION
 F.A.I. 94/90 (DAN RYAN EXPRESSWAY)
 SB DAN RYAN ELEVATED BRIDGE
 REPAIR FROM 15TH TO 28TH STREETS
 MAINTENANCE OF TRAFFIC PLAN - STAGE II
 STA. 196+51 TO STA. 208+51

SCALE: 1"=50'
 DATE: 5/12/2006

DRAWN BY: RA
 CHECKED BY: RS



BOWMAN, BARRETT & ASSOCIATES INC
 CONSULTING ENGINEERS
 Chicago, Illinois
 312.228.0100
 www.bbainc.com