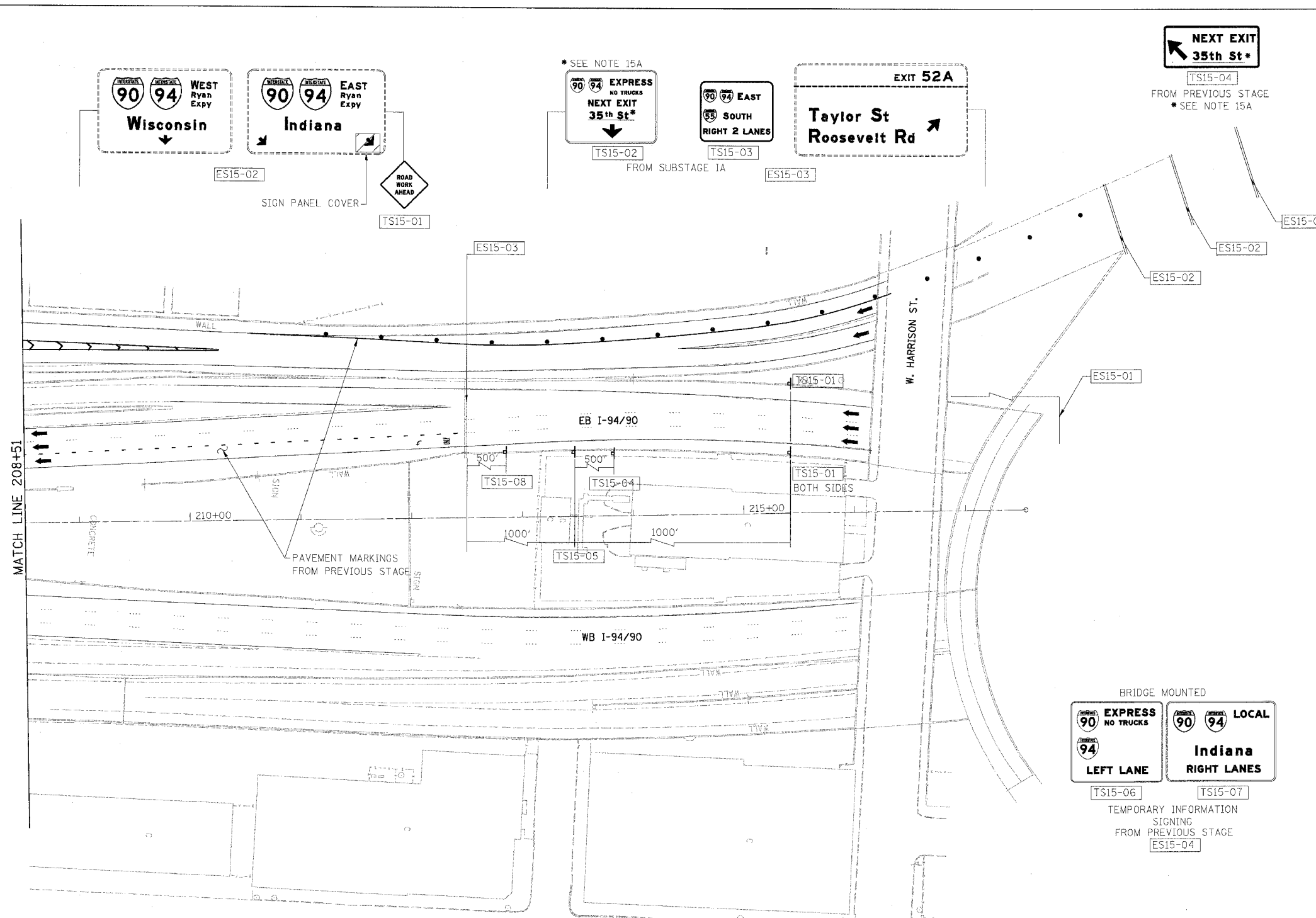


F.A.I.	SECTION	COUNTY	TOTAL SHEETS	SHEET NO.
94/90	2003-0291	COOK	344	90
STA.	TO STA.			
FED. ROAD DIST. NO.	ILLINOIS	FED. AID PROJECT		
62581				



**EXIT 35th St**  
 ←  
 FROM PREVIOUS STAGE  
 \* SEE NOTE 15A

**EXIT 52A**  
**Taylor St  
 Roosevelt Rd**  
 ↑

**LEGEND**

- [Hatched Box] WORK ZONE
- [Arrow] DIRECTION OF TRAFFIC
- [Circle with Burn Light] DRUM OR BARRICADE TYPE II WITH STEADY BURN LIGHT
- [Rectangular Box] IMPACT ATTENUATORS, TEMPORARY (NON-REDIRECTIVE), TEST LEVEL 3
- [T-shape] BARRICADE TYPE III
- [Dashed Line] TEMPORARY CONCRETE BARRIER
- [Circle with Line] LINE 4" (YELLOW EDGE LINE)
- [Circle with Line] LINE 4" (WHITE EDGE LINE)
- [Circle with Line] LINE 4" (SKIP DASH, 6' SKIP - 2' DASH, WHITE)
- [Circle with Line] LINE 5" (SKIP DASH, 30' SKIP - 10' DASH, WHITE)
- [Circle with Line] LINE 8" (WHITE LINE)
- [Circle with Line] LINE 8" (SKIP DASH, 12' SKIP - 3' DASH, WHITE)
- [Circle with Line] LINE 12" (DIAGONAL, 30' C-C)
- [Circle with Line] LINE 12" (DIAGONAL, 500' C-C)
- [Circle with Symbol] LETTERS AND SYMBOLS
- [ESx-xx Box] EXISTING OVERHEAD OR CANTILEVER SIGNS
- [GSx-xx Box] EXISTING POST MOUNTED SIGNS
- [TSx-xx Box] TEMPORARY SIGNS

MATCH LINE 208+51

**NOTE:**  
 EB 1-94/90 TEMPORARY INFORMATION SIGNING, PANEL COVERING AND PANEL REPLACING, TEMPORARY CONCRETE BARRIER, TEMPORARY PAVEMENT MARKINGS WERE INSTALLED IN SUBSTAGE IA, UNLESS OTHERWISE SPECIFIED, TO BE REMOVED AT END OF THIS STAGE  
 15A. IMPORTANT TO COORDINATE NEXT EXIT STREET NAME WITH CONTRACT 62303 THIS CONTRACT 62581 IS RESPONSIBLE FOR THE TEMPORARY SIGNING

**ROAD WORK AHEAD** (diamond sign) [TS15-01] INCLUDED IN "TRAFFIC CONTROL AND PROTECTION, (EXPRESSWAY)" ORANGE BACKGROUND BLACK LEGEND FROM PREVIOUS STAGE

**South Suburbs USE 94 EAST 57 SOUTH** [TS15-04] TEMPORARY INFORMATION SIGNING FROM PREVIOUS STAGE

**Southwest Suburbs USE 55 SOUTH** [TS15-04] TEMPORARY INFORMATION SIGNING FROM PREVIOUS STAGE

**EXPRESS NO TRUCKS** [TS15-05] **LEFT EXIT 1000 FEET** [TS15-05] TEMPORARY INFORMATION SIGNING FROM PREVIOUS STAGE

BRIDGE MOUNTED

**EXPRESS NO TRUCKS** [TS15-06] **94 LOCAL** [TS15-07] **Indiana** [TS15-07] **RIGHT LANES**

**94 LEFT LANE** [TS15-06] **Indiana** [TS15-07] **RIGHT LANES**

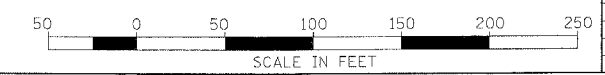
TEMPORARY INFORMATION SIGNING FROM PREVIOUS STAGE [ES15-04]

**NOTE:**  
 ALL PAVEMENT MARKINGS ON THIS SHEET WILL BE PAVEMENT MARKING TAPE, TYPE III, UNLESS OTHERWISE NOTED. MOT-60

REVISIONS	
NAME	DATE

ILLINOIS DEPARTMENT OF TRANSPORTATION  
**F.A.I. 94/90 (DAN RYAN EXPRESSWAY)  
 SB DAN RYAN ELEVATED BRIDGE  
 REPAIR FROM 15TH TO 28TH STREETS  
 MAINTENANCE OF TRAFFIC PLAN - STAGE II  
 STA. 208+51 TO STA.**

SCALE: 1"=50'      DRAWN BY: RA  
 DATE: 5/12/2006      CHECKED BY: RS



BOWMAN, BARRETT & ASSOCIATES INC.  
 CONSULTING ENGINEERS  
 Chicago, Illinois  
 312.228.0100  
 www.bbainc.com

I:\660\CAUTION\7\94\90\STA. 208+51\94-90-208+51-090.DWG