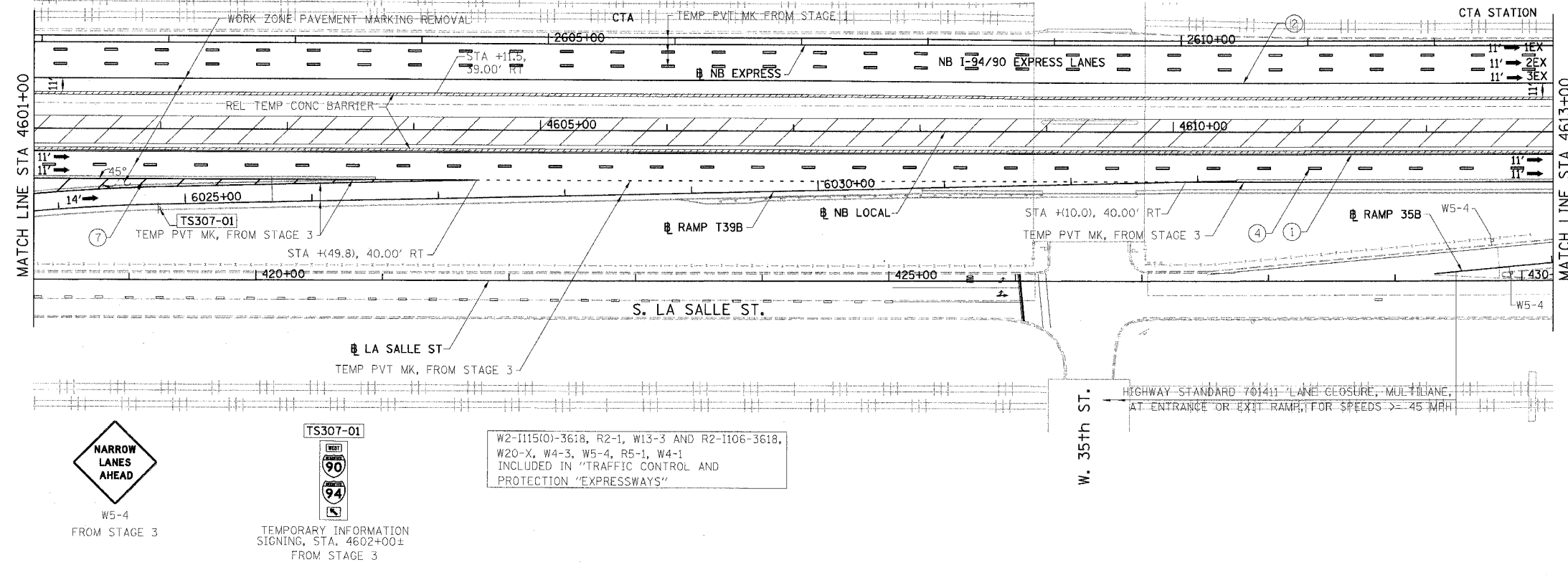
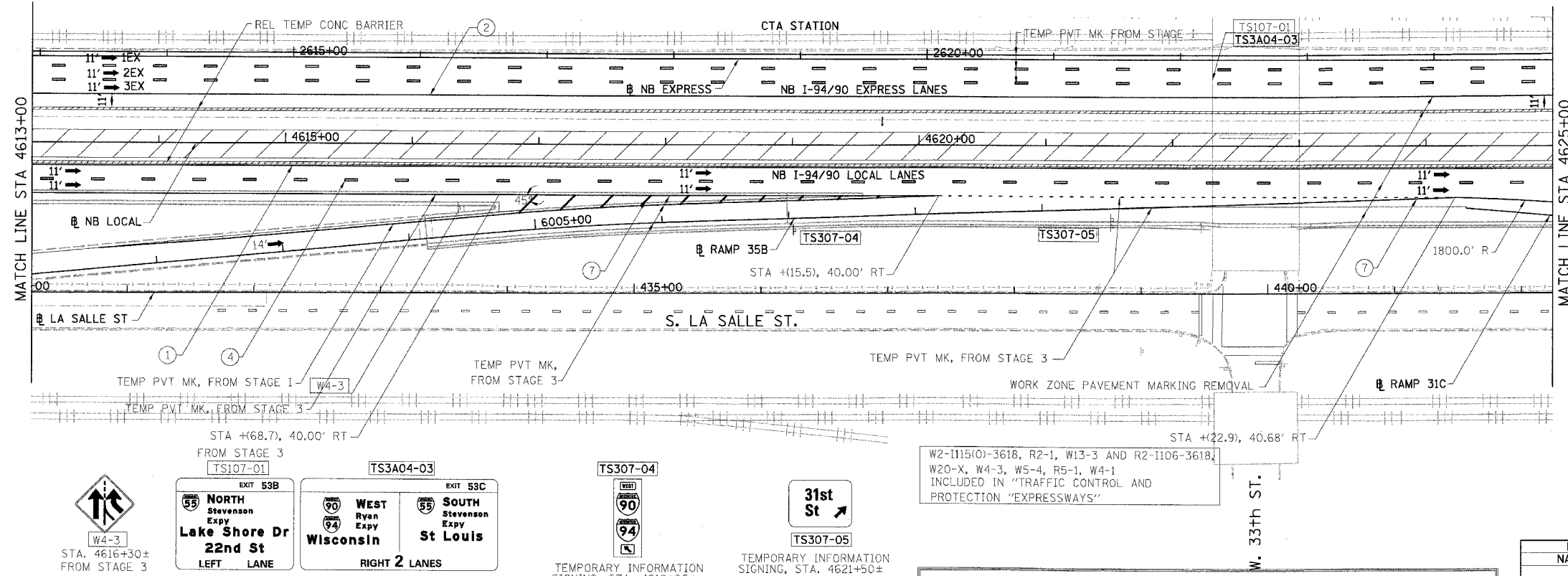


F.A.I.	SECTION	COUNTY	TOTAL SHEETS	SHEET NO.
94/90		COOK	344	100
STA.	TO STA.			
FED. ROAD DIST. NO.	ILLINOIS	FED. AID PROJECT		
62301	*(2021-922 PT2 ETC 2324.6-1P) R-10			



- LEGEND:**
- 1 → LANE NUMBER AND DIRECTION OF TRAFFIC
 - ▨ WORK AREA
 - ▨ TEMPORARY PAVEMENT
 - ∞-∞ IMPACT ATTENUATORS, TEMPORARY (NON-REDIRECTIVE), TEST LEVEL 3
 - DRUM OR BARRICADE TYPE II WITH STEADY BURNING LIGHT
 - ⊥ BARRICADE TYPE III
 - ▨ TEMPORARY CONCRETE BARRIER
 - ① LINE 4" (YELLOW EDGE)
 - ② LINE 4" (WHITE EDGE)
 - ③ LINE 4" (SKIP DASH, 6' SKIP - 2' DASH, WHITE)
 - ④ LINE 5" (SKIP DASH, 30' SKIP - 10' DASH, WHITE)
 - ⑤ LINE 8" (WHITE GORE LINE)
 - ⑥ LINE 8" (SKIP DASH, 12' SKIP - 3' DASH, WHITE)
 - ⑦ LINE 12" (DIAGONAL, 30' C-C, WHITE)
 - ⑧ LETTERS AND SYMBOLS
 - ES-XXX-XX EXISTING OVERHEAD OR CANTILEVER SIGNS
 - CS-XXX-XX EXISTING POST MOUNTED SIGNS
 - TS-XXX-XX TEMPORARY SIGNS
- +XX.XX STATION PROVIDED FROM THE ± SB I-90/94 EXPRESS LANES
 (+XX.XX) STATION PROVIDED FROM THE ± SB I-90/94 LOCAL LANES



- NOTES:**
- SEE SHEET MOTTS-01 FOR TYPICAL SECTIONS.
 - SEE TEMPORARY SIGN PANEL SHEETS FOR DETAILS.

BOWMAN, BARRETT & ASSOCIATES INC
 CONSULTING ENGINEERS
 Chicago, Illinois
 312.228.0100
 www.bbainc.com

NB I-94/90 EXPRESS LANES TEMPORARY PAVEMENT MARKINGS WERE INSTALLED IN STAGES I, 2, 3 AND SUBSTAGE IA, UNLESS OTHERWISE SPECIFIED IN SUBSTAGE 3A.

MAINTENANCE OF TRAFFIC FOR CONTRACT 62301
 IN PROGRESS. SHEET FOR REFERENCE ONLY.
 SEE FINAL CONTRACT 62301 FOR FINAL INFORMATION.

REVISIONS	
NAME	DATE

MOT-3A04
 ILLINOIS DEPARTMENT OF TRANSPORTATION
 F.A.I. 94/90 (DAN RYAN EXPRESSWAY)
 GARFIELD BLVD TO 31ST STREET (NB LOCAL LANES)
 SUGGESTED STAGES OF CONSTRUCTION
 AND TRAFFIC CONTROL
 SUBSTAGE 3A
 SCALE: 1"=50'
 DATE: 5/12/2006
 DRAWN BY: RA
 CHECKED BY: RS