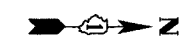
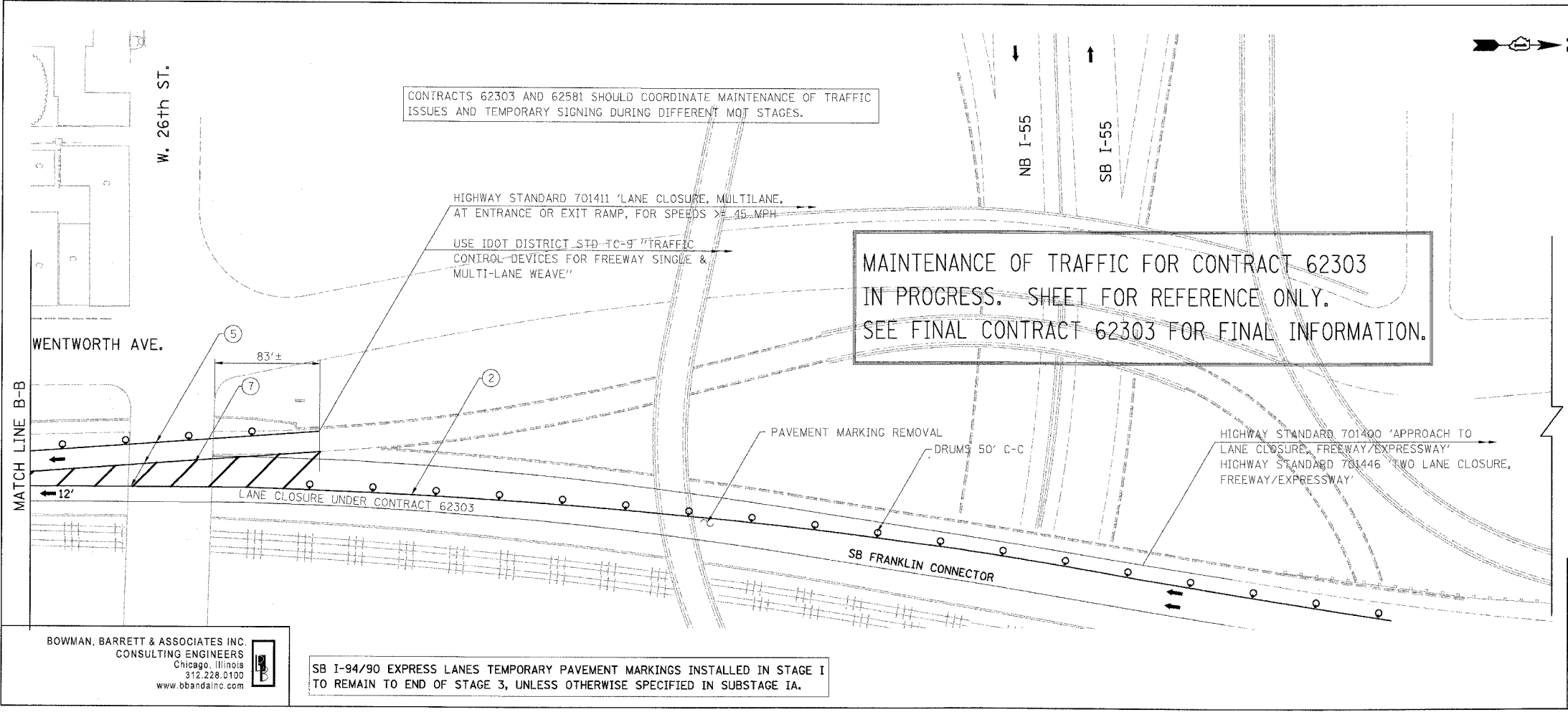
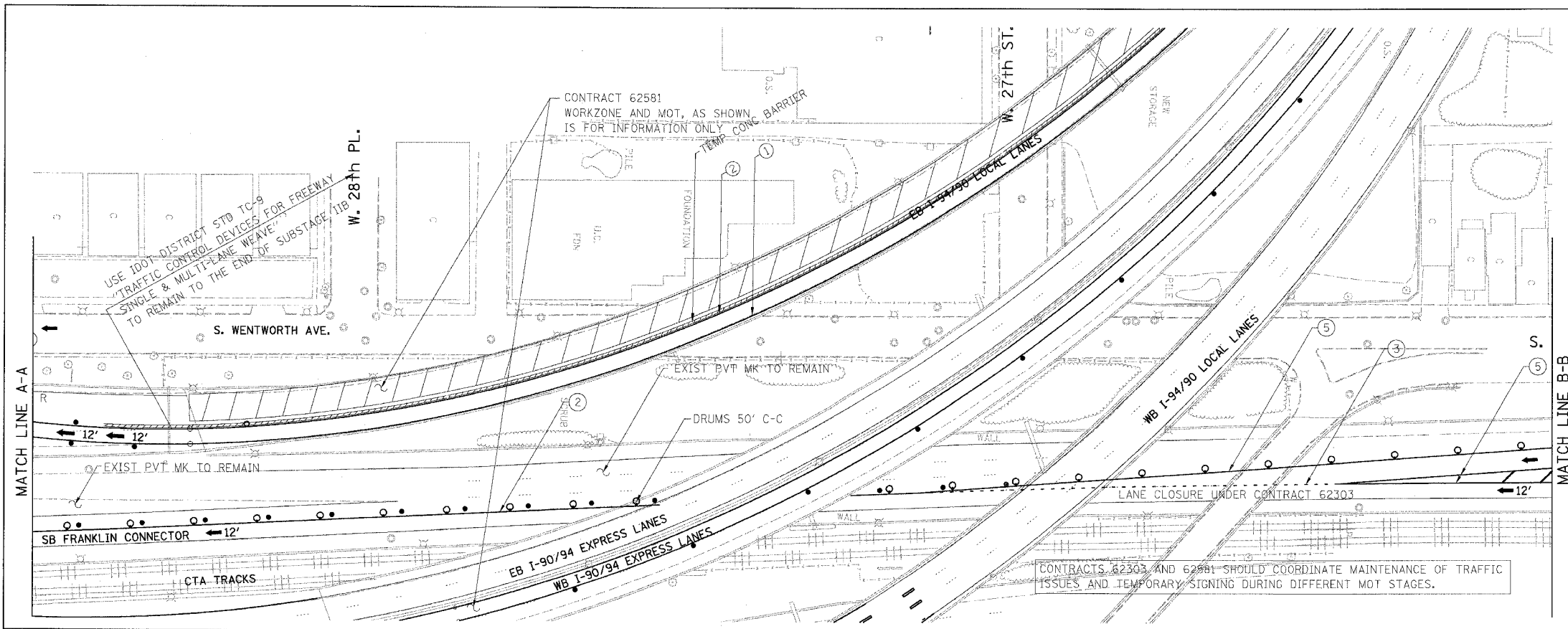


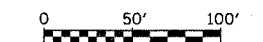
F.A.I.	SECTION	COUNTY	TOTAL SHEETS	SHEET NO.
94/90	*	COOK	344	101
STA.		TO STA.		
FED. ROAD DIST. NO.	ILLINOIS	FED. AID PROJECT		
62303		*I2021-922 P12 ETC 2324.6-1P1 R-11		



LEGEND:

- 1 → LANE NUMBER AND DIRECTION OF TRAFFIC
- [Hatched Box] WORK AREA
- [Dashed Box] TEMPORARY PAVEMENT
- [Wavy Line] IMPACT ATTENUATORS, TEMPORARY (NON-REDIRECTIVE), TEST LEVEL 3
- [Circle with X] DRUM OR BARRICADE TYPE II WITH STEADY BURNING LIGHT
- [T-shaped Symbol] BARRICADE TYPE III
- [Hatched Line] TEMPORARY CONCRETE BARRIER
- ① LINE 4" (YELLOW EDGE)
- ② LINE 4" (WHITE EDGE)
- ③ LINE 4" (SKIP DASH, 6' SKIP - 2' DASH, WHITE)
- ④ LINE 5" (SKIP DASH, 30' SKIP - 10' DASH, WHITE)
- ⑤ LINE 8" (WHITE GORE LINE)
- ⑥ LINE 8" (SKIP DASH, 12' SKIP - 3' DASH, WHITE)
- ⑦ LINE 12" (DIAGONAL, 30' C-C, WHITE)
- ⑧ LETTERS AND SYMBOLS
- [ES-XXX-XX] EXISTING OVERHEAD OR CANTILEVER SIGNS
- [GS-XXX-XX] EXISTING POST MOUNTED SIGNS
- [TS-XXX-XX] TEMPORARY SIGNS

+XX.XX STATION PROVIDED FROM THE ± SB I-90/94 EXPRESS LANES  
 (+XX.XX) STATION PROVIDED FROM THE ± SB I-90/94 LOCAL LANES



MOT-109

REVISIONS	NAME	DATE

ILLINOIS DEPARTMENT OF TRANSPORTATION  
 F.A.I. 94/90 (DAN RYAN EXPRESSWAY)  
 GARFIELD BLVD TO 31ST STREET (SB LOCAL LANES)  
 SUGGESTED STAGES OF CONSTRUCTION  
 AND TRAFFIC CONTROL  
 STAGE I

SCALE: 1"=50'  
 DATE: 5/12/2006

DRAWN BY: RA  
 CHECKED BY: RS

BOWMAN, BARRETT & ASSOCIATES INC.  
 CONSULTING ENGINEERS  
 Chicago, Illinois  
 312.228.0190  
 www.bbainc.com

SB I-94/90 EXPRESS LANES TEMPORARY PAVEMENT MARKINGS INSTALLED IN STAGE I TO REMAIN TO END OF STAGE 3, UNLESS OTHERWISE SPECIFIED IN SUBSTAGE IA.

I-94/90 CONTRACT 62303 SHEET 101 OF 344  
 DATE: 5/12/2006