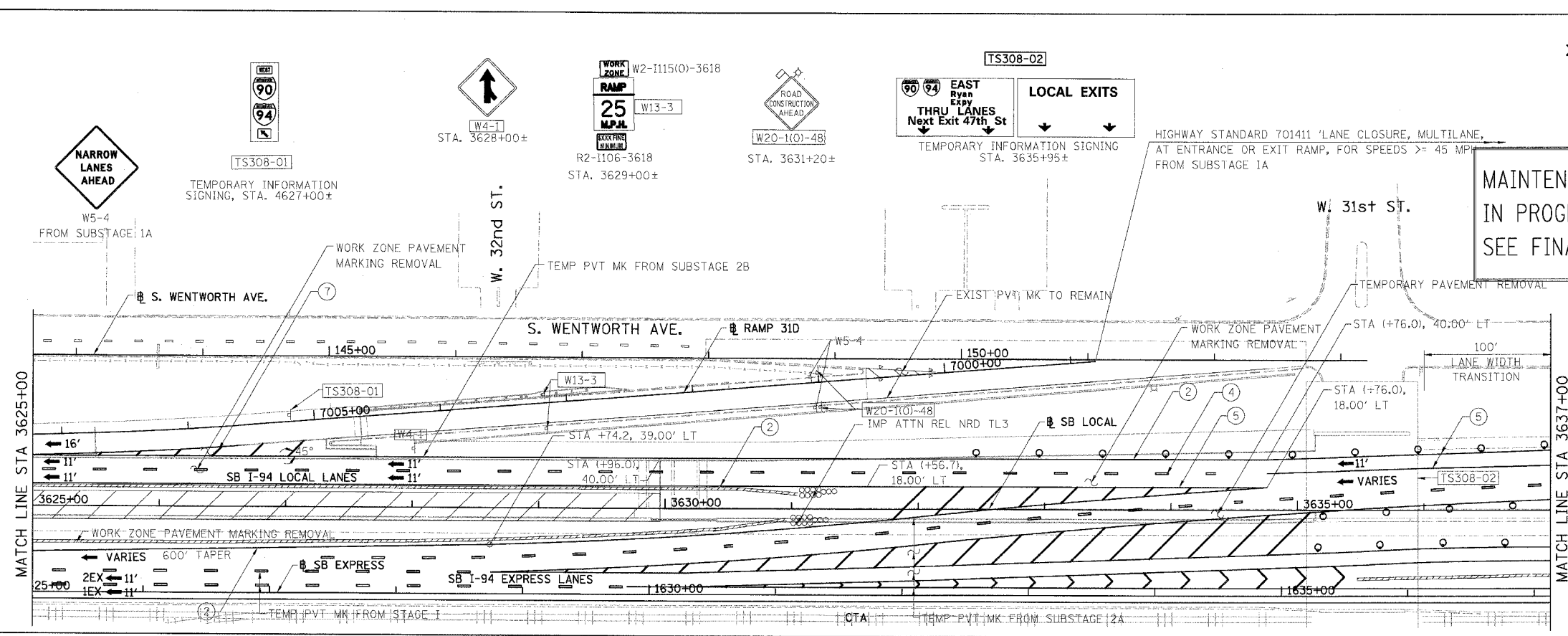
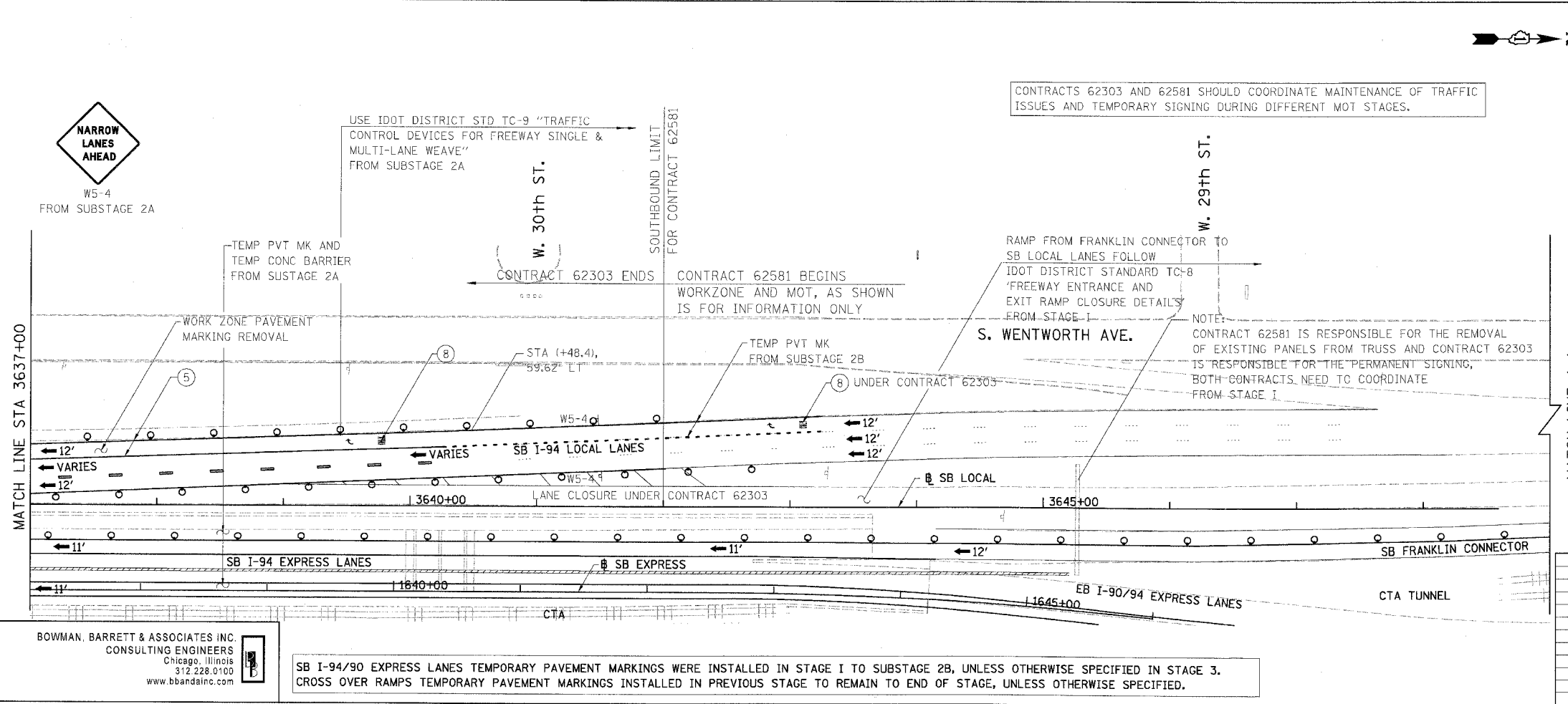


F.A.I.	SECTION	COUNTY	TOTAL SHEETS	SHEET NO.
94/90	*	COOK	344	114
STA.		TO STA.		
62303		* (2021-922 PT2 ETC 2324.6-1P) R-11		

**MAINTENANCE OF TRAFFIC FOR CONTRACT 62303 IN PROGRESS. SHEET FOR REFERENCE ONLY. SEE FINAL CONTRACT 62303 FOR FINAL INFORMATION.**



- LEGEND:**
- 1 → LANE NUMBER AND DIRECTION OF TRAFFIC
  - ▨ WORK AREA
  - ▨ TEMPORARY PAVEMENT
  - ∞ IMPACT ATTENUATORS, TEMPORARY (NON-REDIRECTIVE), TEST LEVEL 3
  - DRUM OR BARRICADE TYPE II WITH STEADY BURNING LIGHT
  - ⊥ BARRICADE TYPE III
  - ▨ TEMPORARY CONCRETE BARRIER
  - ① LINE 4" (YELLOW EDGE)
  - ② LINE 4" (WHITE EDGE)
  - ③ LINE 4" (SKIP DASH, 6' SKIP - 2' DASH, WHITE)
  - ④ LINE 5" (SKIP DASH, 30' SKIP - 10' DASH, WHITE)
  - ⑤ LINE 8" (WHITE GORE LINE)
  - ⑥ LINE 8" (SKIP DASH, 12' SKIP - 3' DASH, WHITE)
  - ⑦ LINE 12" (DIAGONAL, 30' C-C, WHITE)
  - ⑧ LETTERS AND SYMBOLS
  - ES-XXX-XX EXISTING OVERHEAD OR CANTILEVER SIGNS
  - GS-XXX-XX EXISTING POST MOUNTED SIGNS
  - TS-XXX-XX TEMPORARY SIGNS



CONTRACTS 62303 AND 62581 SHOULD COORDINATE MAINTENANCE OF TRAFFIC ISSUES AND TEMPORARY SIGNING DURING DIFFERENT MOT STAGES.

NOTE: CONTRACT 62581 IS RESPONSIBLE FOR THE REMOVAL OF EXISTING PANELS FROM TRUSS AND CONTRACT 62303 IS RESPONSIBLE FOR THE PERMANENT SIGNING. BOTH CONTRACTS NEED TO COORDINATE FROM STAGE I

SB I-94/90 EXPRESS LANES TEMPORARY PAVEMENT MARKINGS WERE INSTALLED IN STAGE I TO SUBSTAGE 2B, UNLESS OTHERWISE SPECIFIED IN STAGE 3. CROSS OVER RAMPS TEMPORARY PAVEMENT MARKINGS INSTALLED IN PREVIOUS STAGE TO REMAIN TO END OF STAGE, UNLESS OTHERWISE SPECIFIED.

BOWMAN, BARRETT & ASSOCIATES INC.  
CONSULTING ENGINEERS  
Chicago, Illinois  
312.228.0100  
www.bbainc.com

REVISIONS	
NAME	DATE

0 50' 100' MOT-308

ILLINOIS DEPARTMENT OF TRANSPORTATION  
F.A.I. 94/90 (DAN RYAN EXPRESSWAY)  
GARFIELD BLVD TO 31ST STREET (SB LOCAL LANES)  
SUGGESTED STAGES OF CONSTRUCTION AND TRAFFIC CONTROL  
STAGE 3

SCALE: 1"=50'  
DATE: 5/12/2006  
DRAWN BY: RA  
CHECKED BY: RS