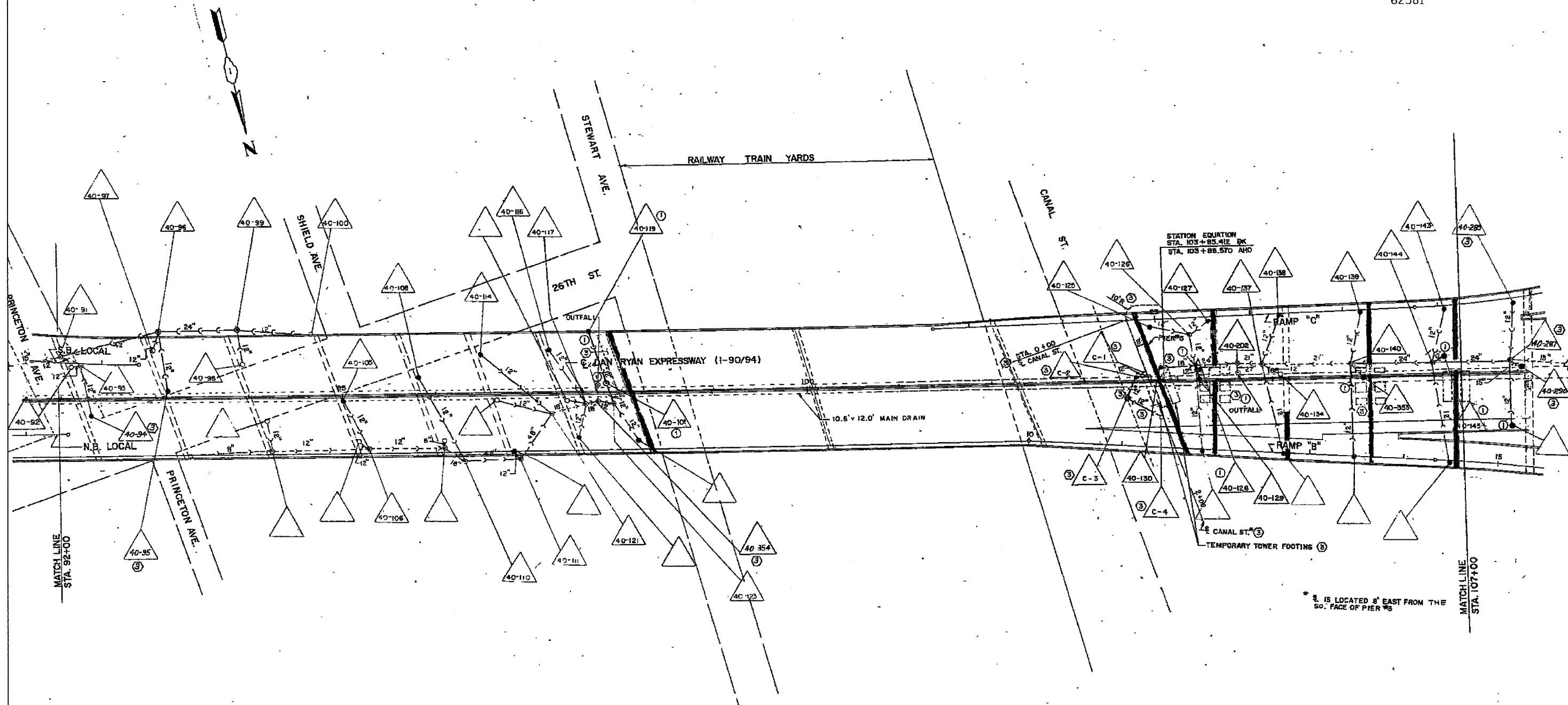


F.A.I.	SECTION	COUNTY	TOTAL SHEETS	SHEET NO.
94/90	2003-0295	COOK	344	152
STA.	TO STA.			
FED. ROAD DIST. NO.	ILLINOIS	FED. AID PROJECT		

62581



* 3 IS LOCATED 8' EAST FROM THE SO. FACE OF PIER #3

BOWMAN, BARRETT & ASSOCIATES INC.
CONSULTING ENGINEERS
Chicago, Illinois
312.228.0100
www.bbandsinc.com

FOR INFORMATION ONLY

NOTE:
Information from 1988-89 As-Builts to show probable location of existing catch basins collecting bridge drainage. Field verify location with Engineer. Clean all catch basins receiving drainage from SB viaduct.

REVISIONS		ILLINOIS DEPARTMENT OF TRANSPORTATION F.A.I. 94/90 (DAN RYAN EXPRESSWAY) SB DAN RYAN ELEVATED BRIDGE REPAIR FROM 15TH TO 28TH STREETS EXISTING DRAINAGE SYSTEM DETAILS
NAME	DATE	

SCALE: NTS
DATE: 4/14/2006
DRAWN BY: BDC
CHECKED BY: BLU

10/25/90 AM 4/14/2006