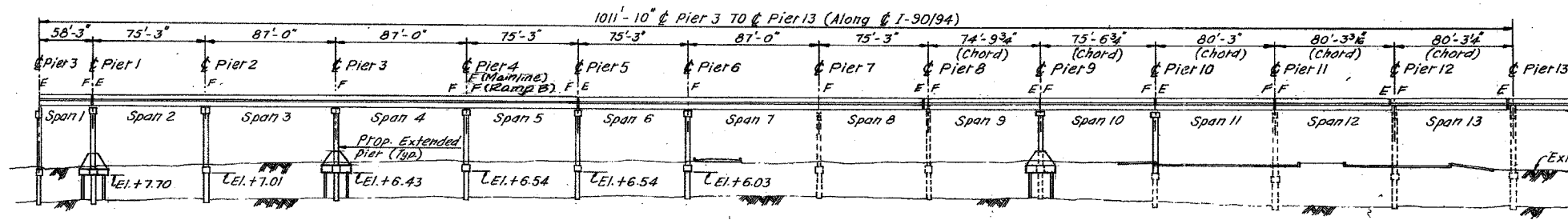
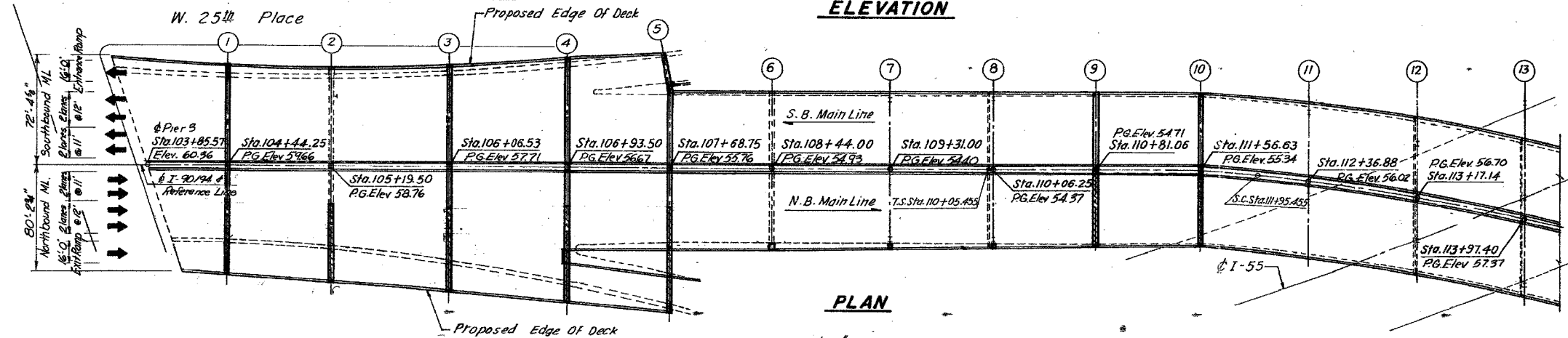


|                     |           |                  |              |           |
|---------------------|-----------|------------------|--------------|-----------|
| F.A.I.              | SECTION   | COUNTY           | TOTAL SHEETS | SHEET NO. |
| 94/90               | 2003-0298 | COOK             | 344          | 164       |
| STA.                | TO STA.   |                  |              |           |
| FED. ROAD DIST. NO. | ILLINOIS  | FED. AID PROJECT |              |           |

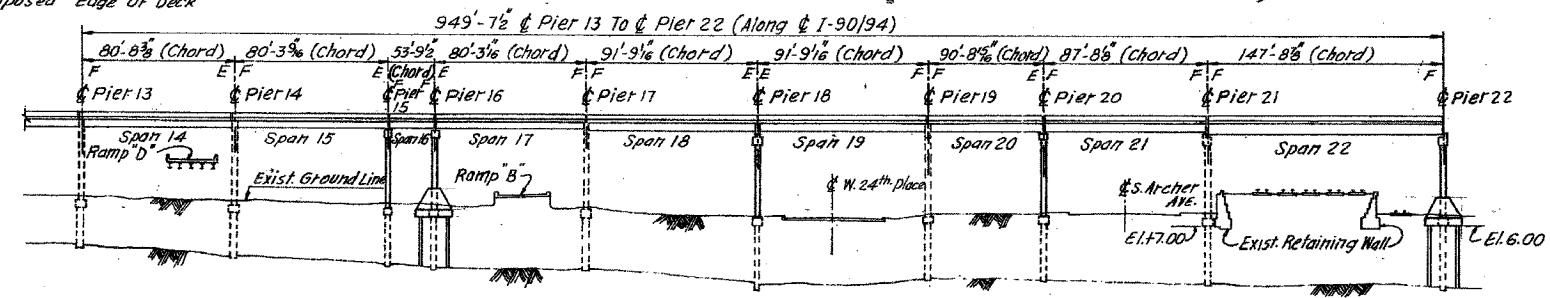
62581



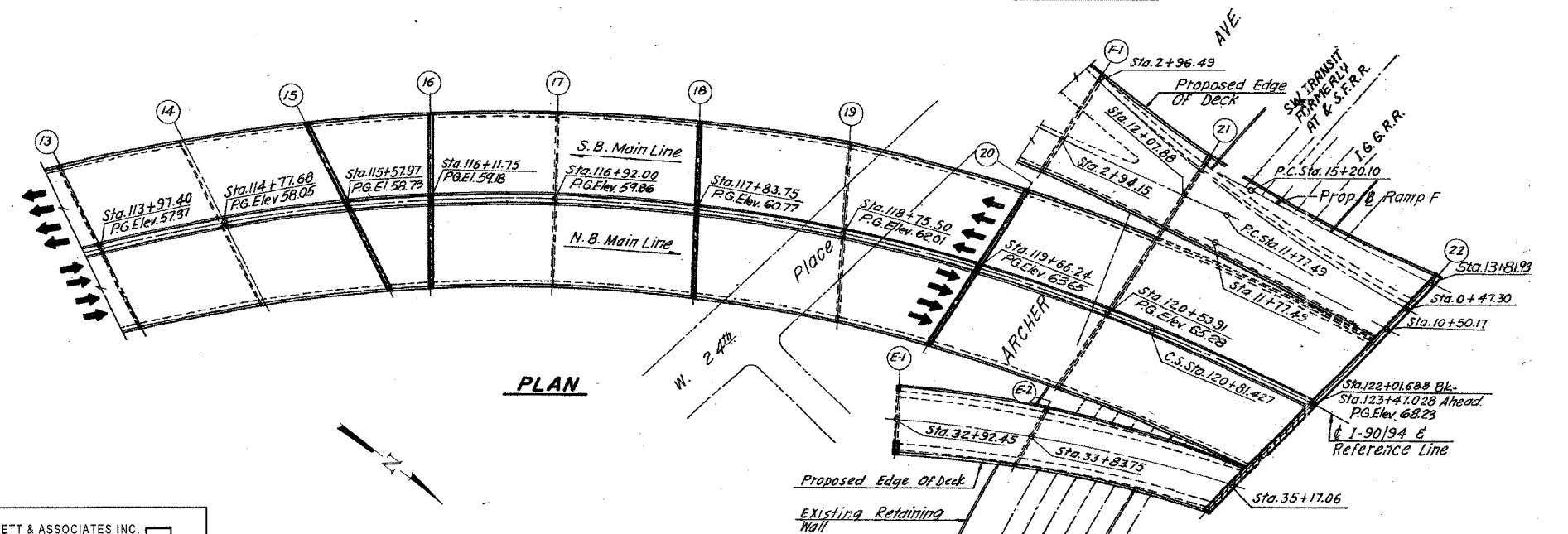
**ELEVATION**



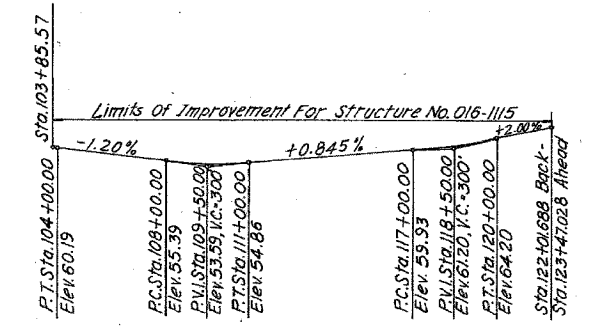
**PLAN**



**ELEVATION**



**PLAN**



**PROFILE GRADE**  
DAN RYAN EXPRESSWAY (I-90/94)

| REVISIONS | NAME | DATE |
|-----------|------|------|
|           |      |      |
|           |      |      |
|           |      |      |
|           |      |      |

ILLINOIS DEPARTMENT OF TRANSPORTATION  
 F.A.I. 94/90 (DAN RYAN EXPRESSWAY)  
 SB DAN RYAN ELEVATED BRIDGE  
 REPAIR FROM 15TH TO 28TH STREETS  
 GENERAL PLAN AND ELEVATION  
 SN 016-1115

SCALE: NTS  
 DATE: 4/14/2006

DRAWN BY: BDC  
 CHECKED BY: BLU

BOWMAN, BARRETT & ASSOCIATES INC.  
 CONSULTING ENGINEERS  
 Chicago, Illinois  
 312.228.0100  
 www.bbainc.com

For Notes and Legend see sheet 161.

4/14/2006 10:25:40 AM  
 N:\650\cadd\BRIDGES\20\151650\_21.dwg PLOT.dwg