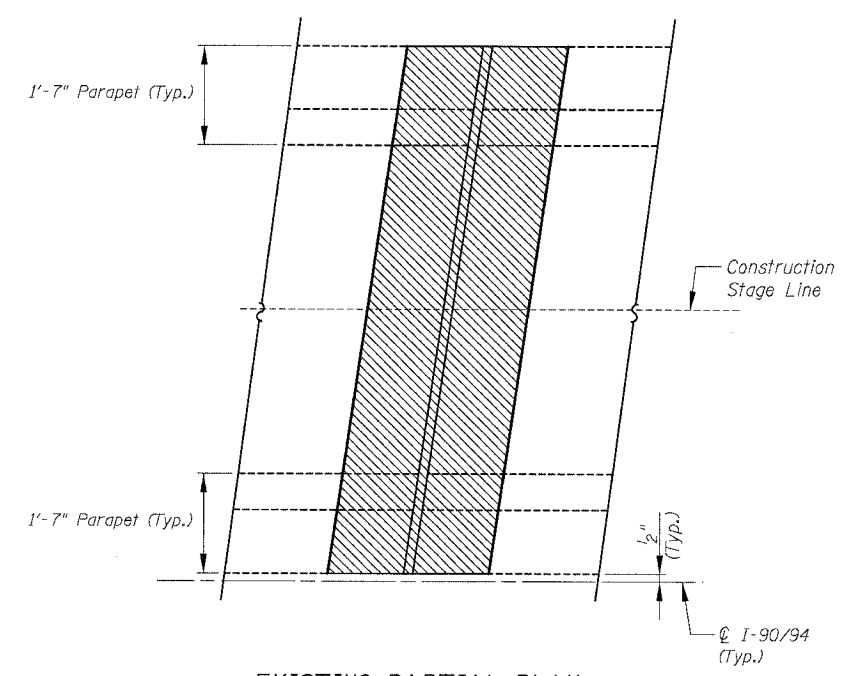
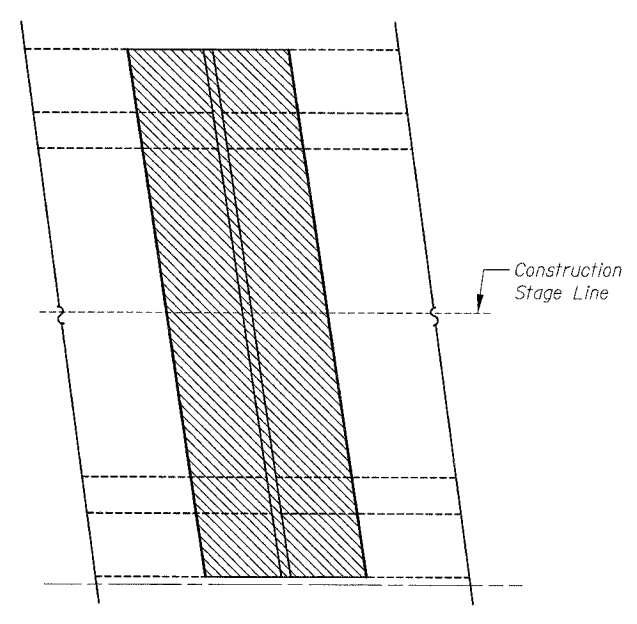


F.A.I.	SECTION	COUNTY	TOTAL SHEETS	SHEET NO.
94/90	2003-0291	COOK	344	197
STA.		TO STA.		
FED. ROAD DIST. NO.	ILLINOIS	FED. AID PROJECT		

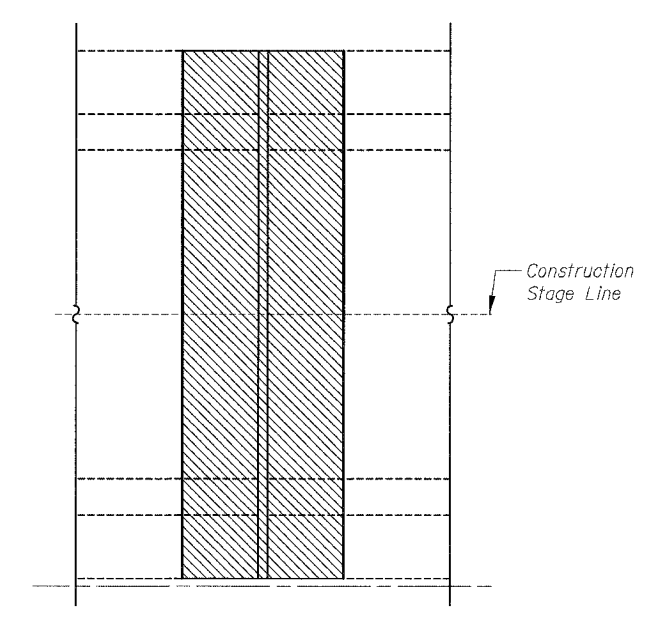
62581



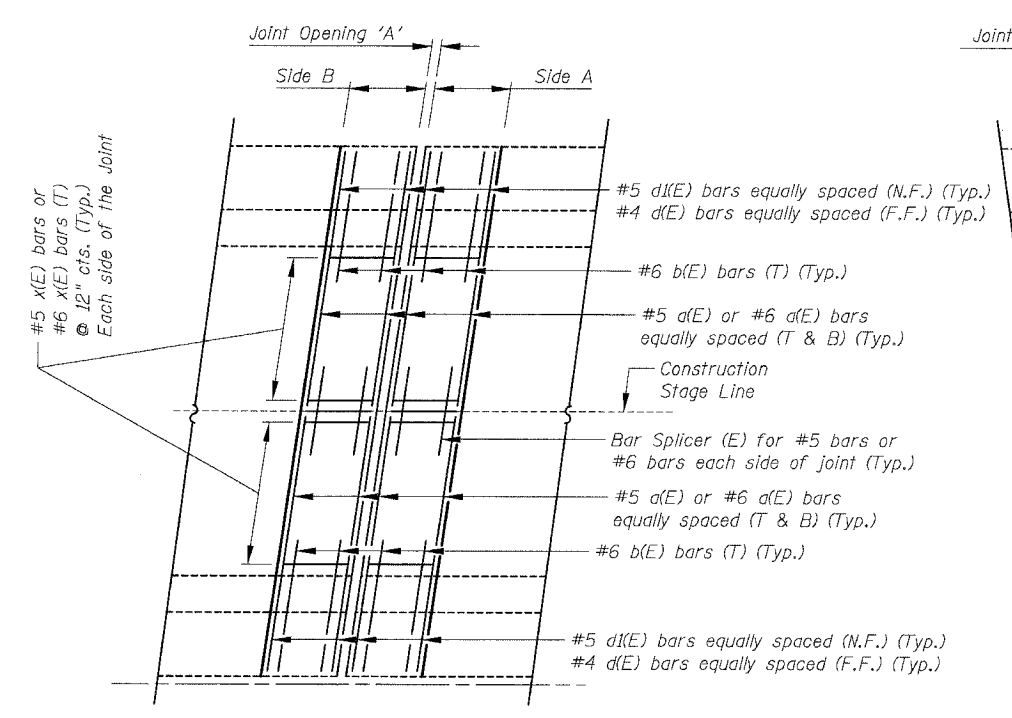
**EXISTING PARTIAL PLAN  
(SKEWED LEFT FORWARD)**



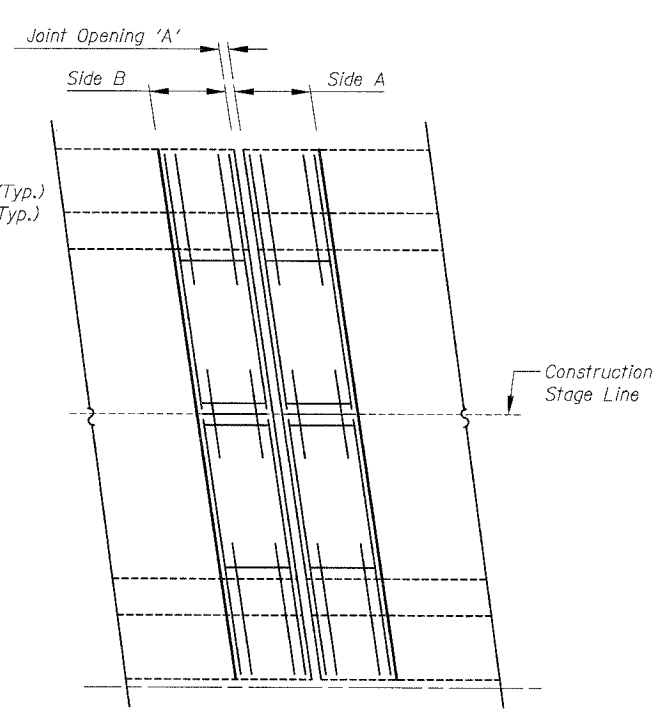
**EXISTING PARTIAL PLAN  
(SKEWED RIGHT FORWARD)**



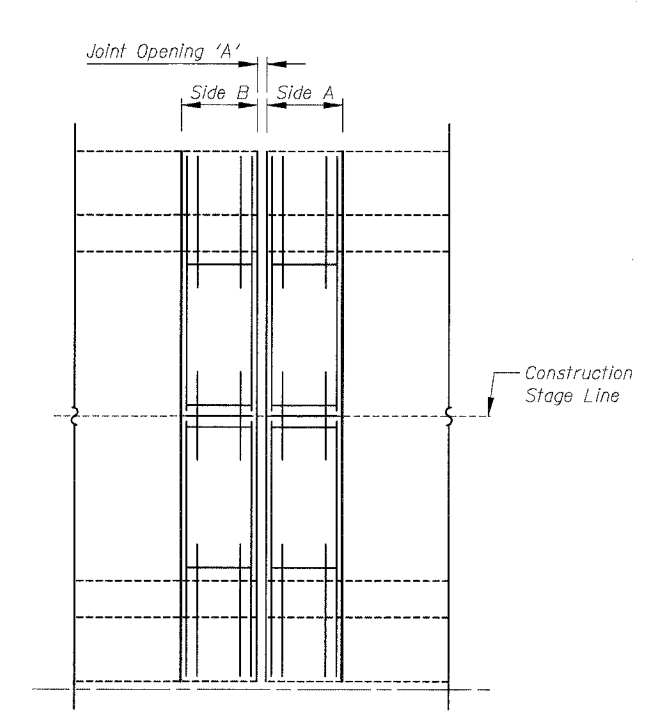
**EXISTING PARTIAL PLAN  
(NO SKEW)**



**(D) PROPOSED PARTIAL PLAN  
(STAGED CONSTRUCTION)  
(SKEWED LEFT FORWARD)**



**(E) PROPOSED PARTIAL PLAN  
(STAGED CONSTRUCTION)  
(SKEWED RIGHT FORWARD)**



**(F) PROPOSED PARTIAL PLAN  
(STAGED CONSTRUCTION)  
(NO SKEW)**

BOWMAN, BARRETT & ASSOCIATES INC.  
CONSULTING ENGINEERS  
Chicago, Illinois  
312.228.0100  
www.bbainc.com



For Notes, Legend, Abbreviations and Reinforcement Bar Locations see sheet 196

REVISIONS	
NAME	DATE

ILLINOIS DEPARTMENT OF TRANSPORTATION  
F.A.I. 94/90 (DAN RYAN EXPRESSWAY)  
SB DAN RYAN ELEVATED BRIDGE  
REPAIR FROM 15TH TO 28TH STREETS  
TYPICAL PARTIAL PLAN (DESIGNATION 2)  
AT STAGED ROADWAYS

SCALE: NTS  
DATE: 5/25/2006

DRAWN BY: BDC  
CHECKED BY: BLU

182165 PM 5/25/2006