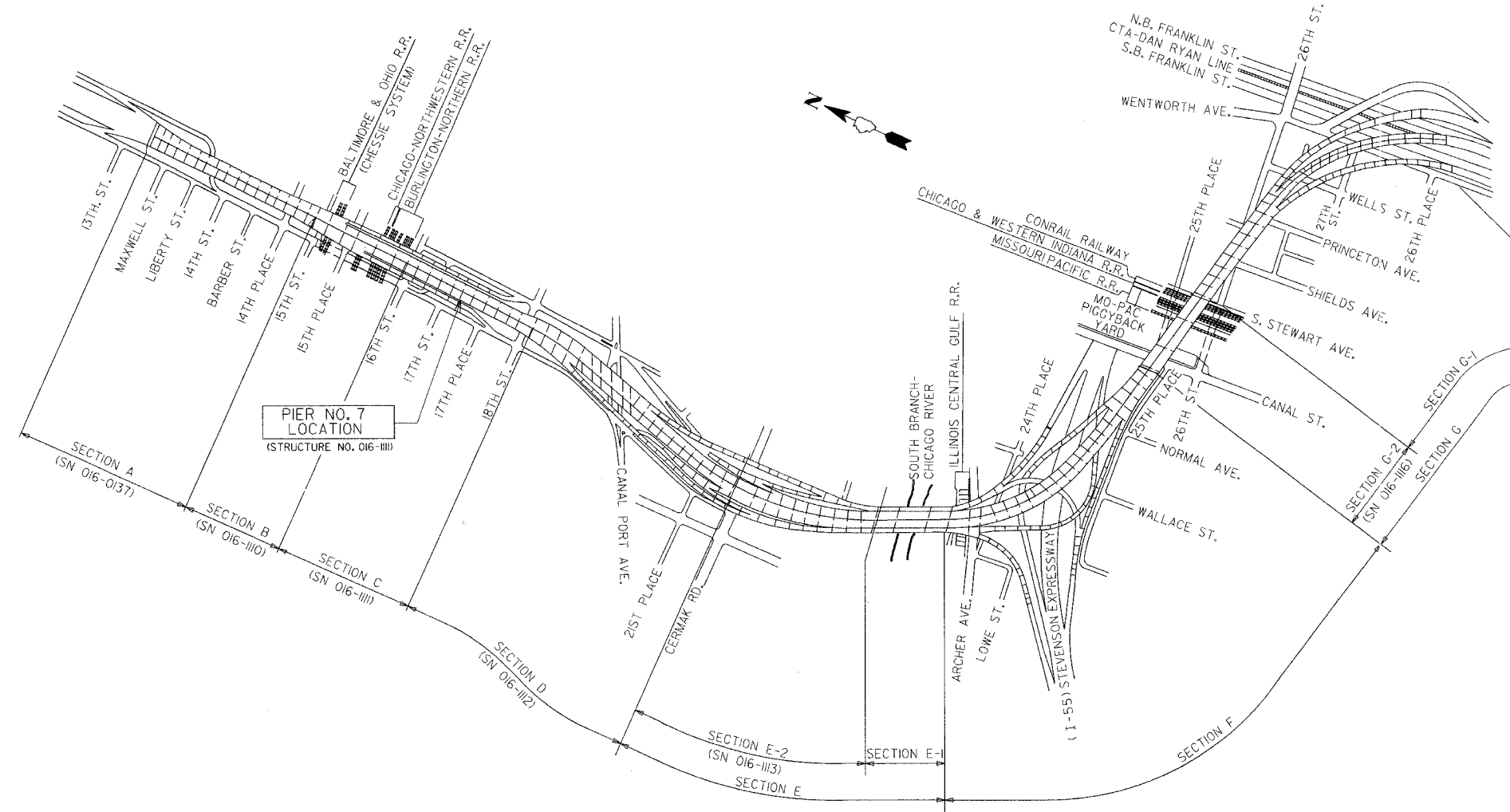


STATE OF ILLINOIS  
DEPARTMENT OF TRANSPORTATION

ROUTE NO.	SECTION	COUNTY	TOTAL SHEETS	SHEET NO.
FAI 90/94	*	COOK	344	228
FEDROAD DIST. NO.		ILLINOIS PROJECT		

Sheet No 1  
of 8 Sheets

• 2003-0291  
CONTRACT #62581



PIER NO. 7  
LOCATION  
(STRUCTURE NO. 016-1111)

**KEY PLAN**  
DAN RYAN EXPRESSWAY (I-90/I-94) VIADUCT  
COOK COUNTY, ILLINOIS

*Thomas E. Szkolnik*  
5-18-06  
11-30-06  
CHIEF ENGINEER  
STATE OF ILLINOIS  
THOMAS E. SZKOLNIK  
4841  
CHICAGO STRUCTURAL

**GENERAL NOTES**

Plan dimensions and details relative to existing structure have been taken from existing plans and are subject to nominal construction variations. It shall be the Contractor's responsibility to verify such dimensions and details in the field and make necessary approved adjustments prior to construction or ordering of materials. Such variations shall not be cause for additional compensation for a change in the scope of the work, however, the Contractor will be paid for the quantity actually furnished at the unit price for the work.

The slab is to be removed in stages. Before starting the concrete removal, the Contractor is required to submit to the Engineer for approval his staging plans and method of removal.

Prior to pouring the new concrete deck, all loose rust, loose mill scale, and other loose potentially detrimental foreign material shall be removed from the surfaces of the beams or girders in contact with concrete. The cost of this work will be included in the pay item covering removal of the existing concrete. All heavy rust and other tightly adhered potentially detrimental foreign matter shall also be removed from the surfaces of the beams or girders in contact with concrete. Tightly adhered paint may remain unless otherwise noted. This removal shall be accomplished by methods that will not damage the steel. The cost of this work will be paid for according to Article 109.04 of the Standard Specifications.

Field welding of construction accessories will not be permitted to beams or girders.

Tapered shims shall be added under the stools as required by the Engineer to make a smooth finger joint. Cost shall be included in the cost of "Furnishing and Erecting Structural Steel".

The finger plates shall be flame cut as provided in Article 505.04(k) of the Standard Specifications

Finger plate expansion joints shall be assembled in the proper position with the ends in place and shall be left assembled for shop inspection.

Joint openings shall be adjusted according to Article 503.10(c) of the Standard Specifications when the deck is poured at an ambient temperature other than 50°F

Fasteners shall be high strength bolts. Bolts 3/4"  $\phi$ , open holes 13/16"  $\phi$  unless otherwise noted.

Existing structural steel that will be in contact with new structural steel shall be cleaned and painted prior to erection as required by the Special Provision "Cleaning and Painting Contact Surface Areas of Existing Steel Structures".

All new structural steel shall be shop painted with an inorganic zinc rich primer per AASHTO M 300, Type 1. Cost included with "Furnishing and Erecting Structural Steel".

The existing structural steel coating contains lead. The Contractor should take appropriate precautions to deal with the presence of lead on this project.

All Construction joints shall be bonded.

Traffic to be maintained during construction, see Roadway Plans for Stage Construction Details.

Field measurements are required to verify the proper dimensions of the finger plates and stools. See special provision "Field Measurements".

Existing design and fabrication plans are available upon request.

All structural steel shall be AASHTO M270 Grade 50 unless noted otherwise. Calculated weight of structural steel = 25,350 lbs.

**DESIGN STRESSES**

$f'_c$  = 3500 psi  
 $f_y$  = 60,000 psi (Reinf)  
 $f_y$  = 50,000 psi (M270 Grade 50)

**BILL OF MATERIAL**

ITEM	UNIT	TOTAL
Concrete Removal	Cu Yd	17.1
Concrete Superstructure	Cu Yd	18.6
Furnishing and Erecting Structural Steel	LS	0.11
Reinforcement Bars, Epoxy Coated	Pound	2430
Fabric Reinforced Elastomeric Trough	Foot	64
Mechanical Splice	Each	130
Bar Splicer	Each	24
Field Measurements	L. Sum	0.11

**PIER NO. 7**

**KEY PLAN**

REVISIONS		STATE OF ILLINOIS DEPARTMENT OF TRANSPORTATION DIVISION OF HIGHWAYS		DRAWN BY DATE RLK 5/03
NO.	DATE	INITIALS	FAI RTE 90/94 SB DAN RYAN EXPRESSWAY SN 016-1111 (SOUTHBOUND)	CHECKED BY DATE SDS 5/03
1			SEC 2003-0291	BOOK NUMBER
2			COOK COUNTY	PROJECT NO.
3				4222-3
4				SHEET NO.
5				
6				
7				
8				
9				
10				

HOMER L. CHASTAIN & ASSOCIATES  
CONSULTING ENGINEERS  
8600 W. BERTH MAWLE AVENUE  
SUITE 204  
CHICAGO, ILLINOIS 60631  
812-734-0000  
FAX 812-734-0005