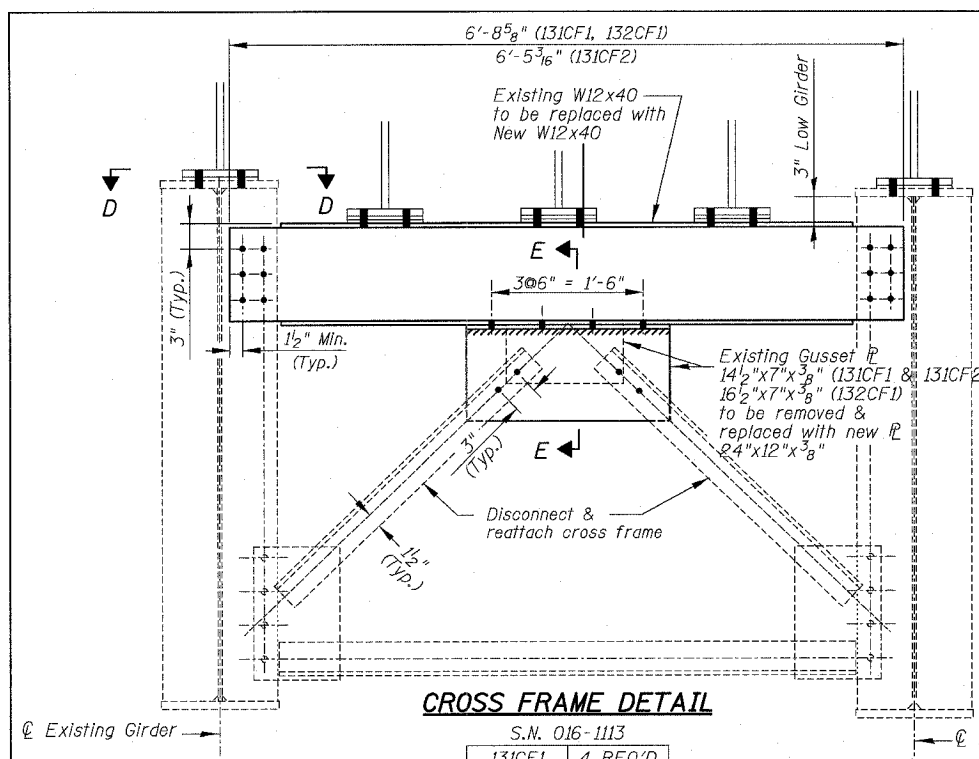


F.A.I.	SECTION	COUNTY	TOTAL SHEETS	SHEET NO.
94/90	2003-029I	COOK	344	270
STA.	TO STA.			
FED. ROAD DIST. NO.	ILLINOIS	FED. AID PROJECT		

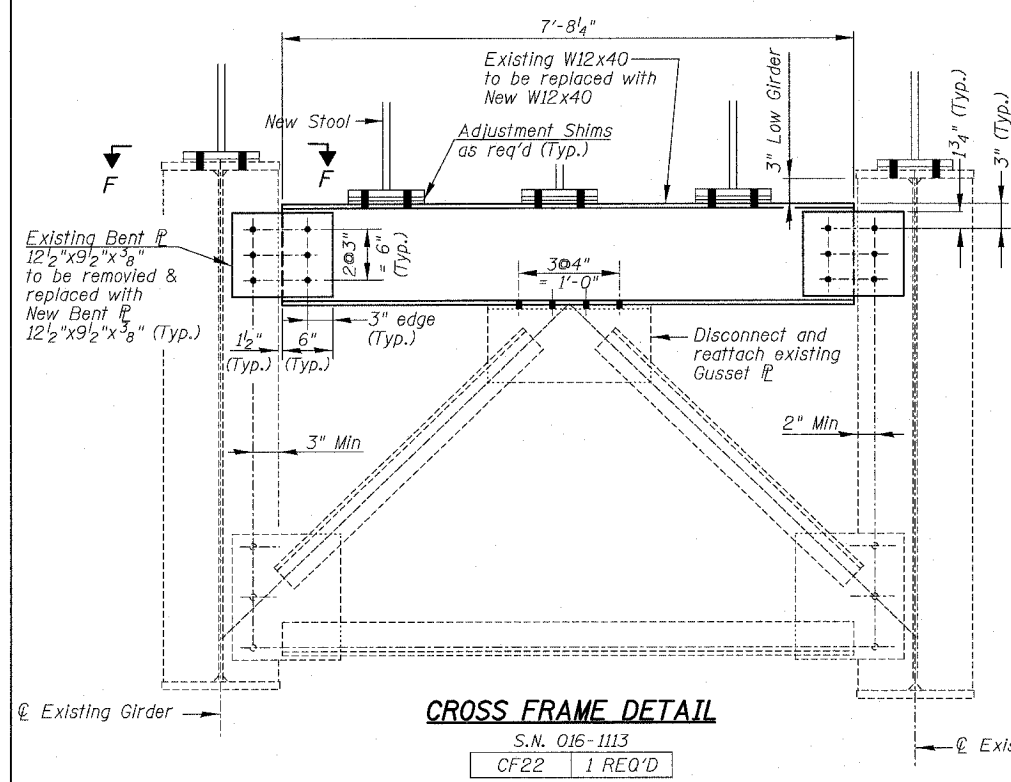
62581



CROSS FRAME DETAIL

S.N. 016-1113

131CF1	4 REQ'D
131CF2	4 REQ'D
132CF1	3 REQ'D



CROSS FRAME DETAIL

S.N. 016-1114

202CF9	2 REQ'D
202CF10	1 REQ'D
202CF12	3 REQ'D
105CF5	1 REQ'D

S.N. 016-1066

105CF2	1 REQ'D
107CF2	3 REQ'D
A3	1 REQ'D
E22	1 REQ'D
B53	1 REQ'D

BILL OF MATERIAL

Item	Unit	Quantity
Furnishing & Erecting Structural Steel	Lum Sum	0.03
Structural Steel Removal	Pound	6,520

S.N. 016-1113

CF16	2 REQ'D
------	---------

Diaphragm Designation	Existing Bent Plate Removal	New Bent Plate
E22	11 1/4"x24 1/2"x3/8" (W.S.) 14 1/4"x24 1/2"x3/8" (E.S.)	18"x35"x3/8" (Both Sides)
B53	15 3/4"x23 1/2"x3/8" (W.S.) 15 3/4"x25"x3/8" (E.S.)	17"x35"x3/8" (Both Sides)
105CF2	14 1/2"x26"x3/8" (W.S.)	18"x27"x3/8" (W.S.)
105CF5	17 1/4"x26"x3/8" (E.S.)	21"x27"x3/8" (E.S.)
107CF2	18"x24"x3/8" (W.S.) 15"x24"x3/8" (E.S.)	18"x27"x3/8" (W.S.) 21"x27"x3/8" (E.S.)
A3	15 3/4"x25 1/2"x3/8" (W.S.) 16"x39"x3/8" (E.S.)	18"x27"x3/8" (W.S.) 18"x30"x3/8" (E.S.)
202CF9, 202CF10, 202CF12	14"x24"x3/8" (W.S.) 17"x24"x3/8" (E.S.)	18"x27"x3/8" (W.S.) 21"x27"x3/8" (E.S.)

NOTES:

1. Calculated weight of Structural Steel used for the item "Furnishing & Erecting Structural Steel" = 7,200 Lbs, and itemized as follows:
 S.N. 016-1113 = 1,850 Lbs
 S.N. 016-1066 = 2,390 Lbs
 S.N. 016-1114 = 2,960 Lbs
2. Calculated weight of Structural Steel used for the item "Structural Steel Removal" = 6,520 Lbs, and itemized as follows:
 S.N. 016-1113 = 2,140 Lbs
 S.N. 016-1066 = 2,710 Lbs
 S.N. 016-1114 = 1,670 Lbs
3. E.S. denotes East Side. W.S. indicates West Side.

BOWMAN, BARRETT & ASSOCIATES INC.
 CONSULTING ENGINEERS
 Chicago, Illinois
 312.228.0100
 www.bbainc.com

REVISIONS	DATE

ILLINOIS DEPARTMENT OF TRANSPORTATION
 F.A.I. 94/90 (DAN RYAN EXPRESSWAY)
 SB DAN RYAN ELEVATED BRIDGE
 REPAIR FROM 15TH TO 28TH STREETS
 DIAPHRAGM REPLACEMENT DETAILS
 PIER 1, SN 016-1113

SCALE: NTS
 DATE: 5/25/2006

DRAWN BY: BDC
 CHECKED BY: IYL

I:\660\94\BRIDGE\20\SHETS\660_21_016-1113-F1.dwg 4/46/06 5/25/2006