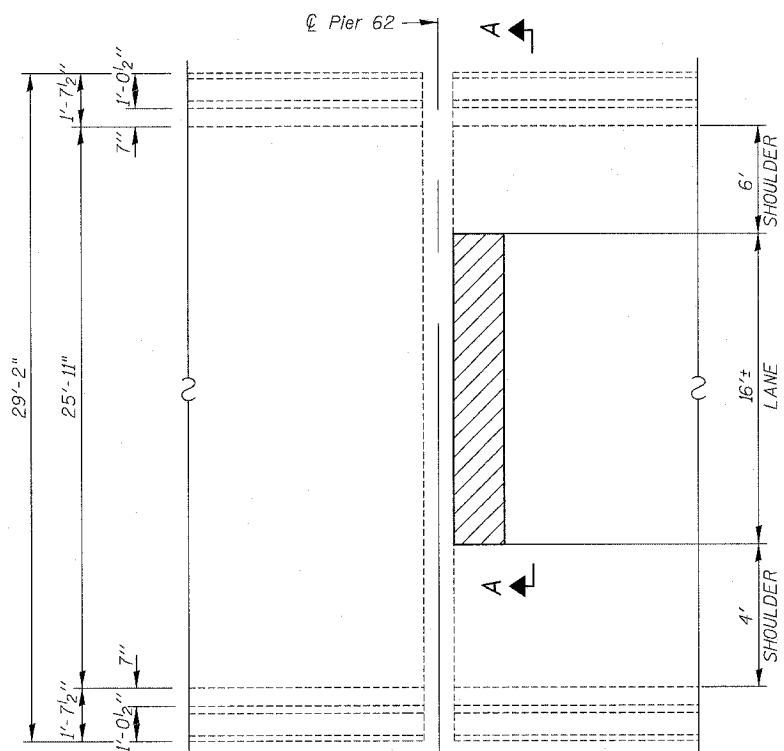
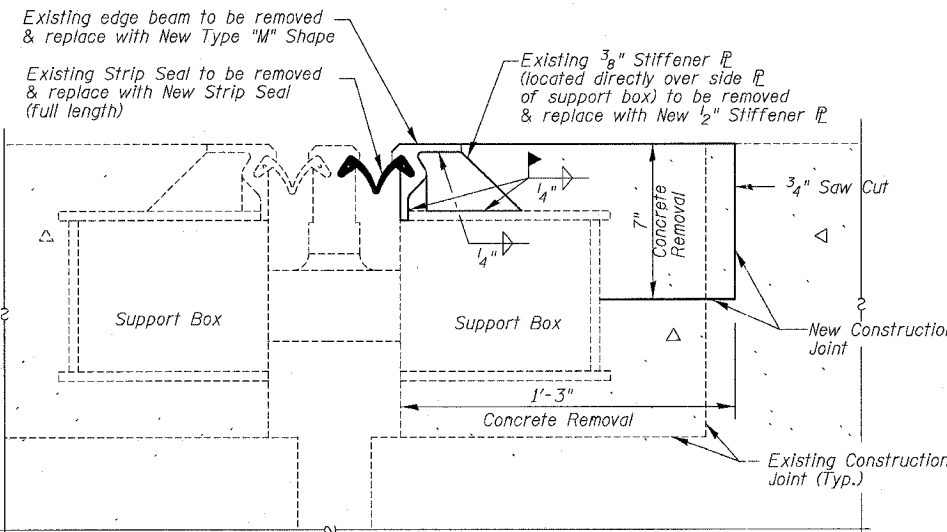


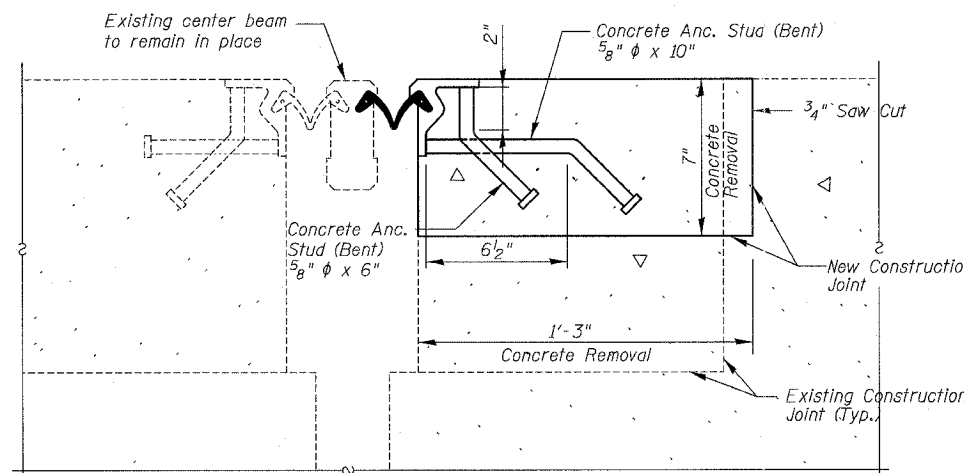
F.A.I.	SECTION	COUNTY	TOTAL SHEETS	SHEET NO.
94/90	2003-0291	COOK	344	277
STA.	TO STA.			
FED. ROAD DIST. NO.	ILLINOIS	FED. AID PROJECT		
62581				



PARTIAL DECK PLAN - PIER 62



SECTION B-B



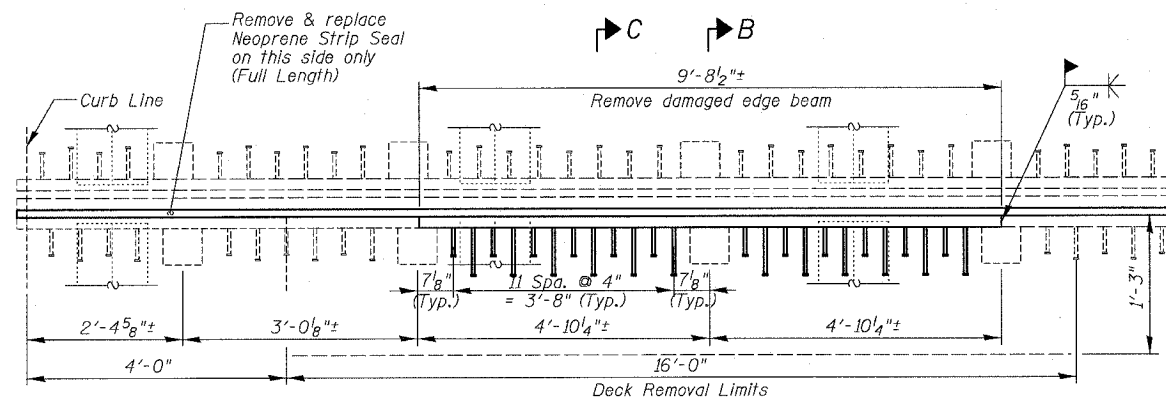
SECTION C-C

MODULAR EXPANSION JOINT REPAIR NOTES

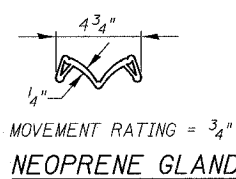
- Existing edge beam and stiffener plates shall be removed by removing welds and grinding smooth. Field cut shall use air arc method. Flame cutting will not be permitted within 2" of top and side plates of support boxes. Grind surface after cutting to a surface roughness of (Ra) 250µ inch or less. Grinding shall be done parallel to the longitudinal direction of support box beams. Cost of field cutting, grinding and drilling shall be included with "Modular Expansion Joint Repair".
- Cost of removal and disposal of existing steel and strip seal shall be included in the cost of "Modular Expansion Joint Repair".
- Existing junction plates at parapet shall be disconnected and reattached to install new strip seal. Cost included in "Modular Expansion Joint Repair".
- Spalled or hollow concrete beyond the specified removal dimensions, if any, shall be removed prior to the edge beam replacement. Concrete patching after joint repair shall be in accordance with the Special Provision for Deck Slab Repair. Cost included in "Concrete Removal". The cost of saw cut for concrete removal shall be included in "Concrete Removal".
- Existing deck rebars within the removal area and depth, if any, shall remain.. Bend conflicting rebars as directed by Field Engineer. Rebars damaged during concrete removal shall be replaced at no cost to the Department.
- Contractor shall place formwork so that no concrete flows into boxes and joint gap opening.
- Contractor shall field verify all relevant dimensions prior to ordering or fabricating materials. See Special Provision for Field Measurements.

BILL OF MATERIAL

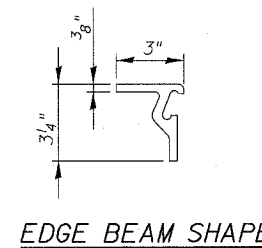
ITEM	UNIT	QTY.
CONCRETE REMOVAL	CU. YD.	1
CONCRETE SUPERSTRUCTURES	CU. YD.	0.4
MODULAR EXPANSION JOINT REPAIR	L. SUM	1



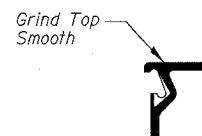
SECTION A-A



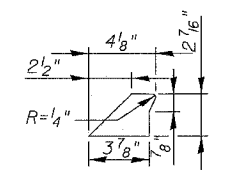
MOVEMENT RATING = 3/4"
NEOPRENE GLAND



EDGE BEAM SHAPE



FIELD WELD
NOTE: Shaded area to be groove welded



STIFFENER PLATE

BOWMAN, BARRETT & ASSOCIATES INC.
CONSULTING ENGINEERS
Chicago, Illinois
312.228.0100
www.bbainc.com

REVISIONS		ILLINOIS DEPARTMENT OF TRANSPORTATION	
NAME	DATE	F.A.I. 94/90 (DAN RYAN EXPRESSWAY)	
		SB DAN RYAN ELEVATED BRIDGE	
		REPAIR FROM 15TH TO 28TH STREETS	
		MODULAR EXPANSION JOINT REPAIR	
		SN 016-1046	
		SCALE: NTS	DRAWN BY: BDC
		DATE: 5/25/2006	CHECKED BY: IYL

W:\660\9409\BRIDGE\215\ASHEETS\660_215_SF049P

4:53:55 PM 5/25/2006