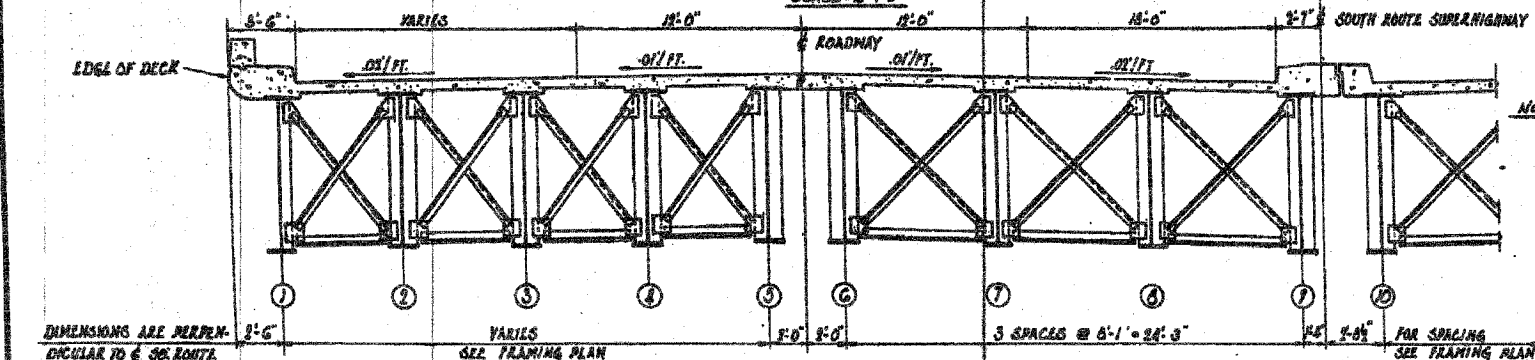
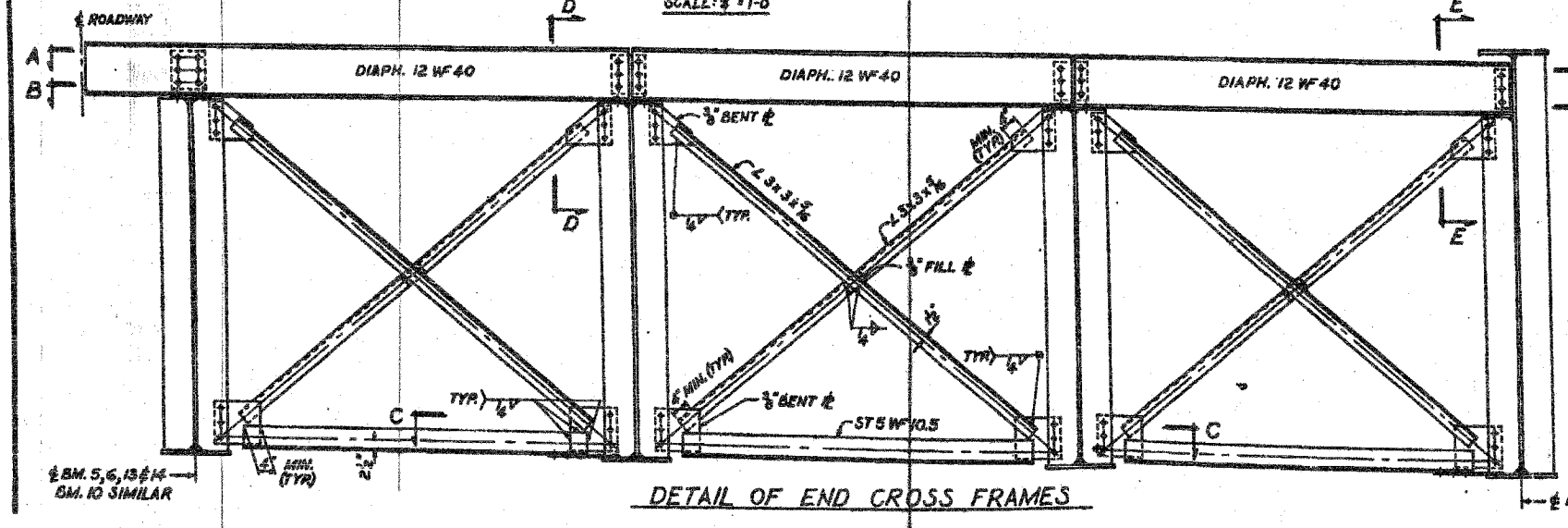


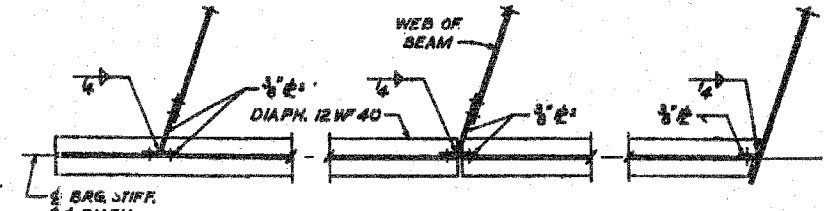
**END CROSS FRAMES
PIER 2G AND PIER 3**
SCALE: 1/2" = 1'-0"



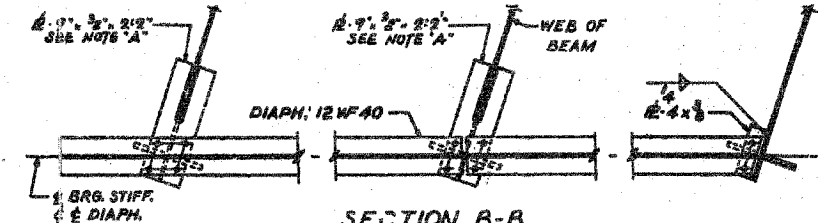
**INTERMEDIATE CROSS FRAMES
PIER CROSS FRAMES AT PIER 1 AND PIER 2 SIMILAR**
SCALE: 1/2" = 1'-0"



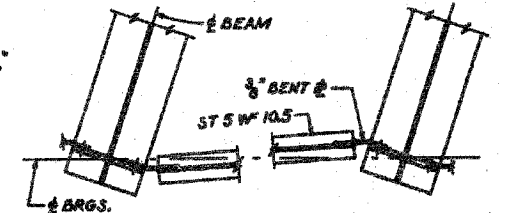
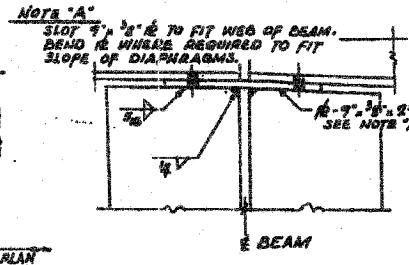
DETAIL OF END CROSS FRAMES



SECTION A-A
SCALE: 3/4" = 1'-0"

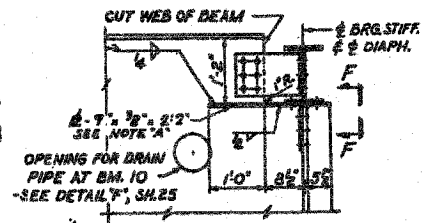


SECTION B-B
SCALE: 3/4" = 1'-0"

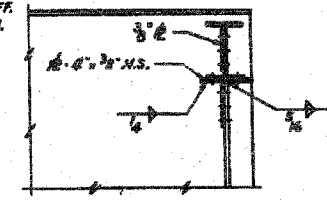


SECTION C-C
SCALE: 3/4" = 1'-0"

SECTION F-F
SCALE: 3/4" = 1'-0"



**SECTION D-D
TYPICAL BEAM**
SCALE: 3/4" = 1'-0"



**SECTION E-E
BEAMS 1, 9, & 17**
SCALE: 3/4" = 1'-0"

CITY OF CHICAGO
DEPARTMENT OF PUBLIC WORKS
BUREAU OF ENGINEERING
**SOUTH ROUTE SUPERHIGHWAY
ELEVATED HIGHWAY
STEWART AVE. TO CANAL ST.**
SECTION 8-8424.3-3H
CROSS FRAME DETAILS

FOR INFORMATION ONLY

REVISIONS	NAME	DATE

ILLINOIS DEPARTMENT OF TRANSPORTATION
F.A.I. 94/90 (DAN RYAN EXPRESSWAY)
SB DAN RYAN ELEVATED BRIDGE
REPAIR FROM 15TH TO 28TH STREETS
EXISTING PLAN INFORMATION
SN 016-1116
SCALE: NTS
DATE: 5/25/2006
DRAWN BY: MTR
CHECKED BY: BLU

BOWMAN, BARRETT & ASSOCIATES INC.
CONSULTING ENGINEERS
Chicago, Illinois
312.228.0100
www.bbainc.com

4/26/03 FH