

F.A.U. RTE.	SECTION	COUNTY	TOTAL SHEETS	SHEET NO.
357B	1327B	COOK	108	8
STA. 1503+19.73		TO STA. 1528+17.76		
FED. ROAD DIST. NO. 1		ILLINOIS FED. AID PROJECT		

STRUCTURAL DESIGN TRAFFIC: Year 2016
 PV = 12,587 SU = 864 MU = 261
 ROAD/STREET CLASSIFICATION: Class 2
 PERCENT OF STRUCTURAL DESIGN TRAFFIC IN DESIGN LANE:
 P = 50% S = 50% M = 50%
 TRAFFIC FACTOR: Actual TF = 1.99 AC Type = 10
 Minimum TF = 3.81
 AC GRADE: Binder = PG 64-22 Surface = PG 64-22
 SUBGRADE SUPPORT RATING:
 SSR = 2.00 (Sta. 1503+19.73 to 1528+17.76)
 SSR = 2.00 (Sta. 1503+19.73 to 1528+17.76)

STRUCTURAL PAVEMENT DESIGN INFORMATION BLOCK

LEGEND:

- ① EXISTING 9"-7"-9" PAVEMENT TO BE REMOVED
- ② EXISTING AGGREGATE SHOULDER, TYPE B TO BE REMOVED (PAID FOR AS EARTH EXCAVATION)
- ③ EXISTING GUARDRAIL TO BE REMOVED
- ④ PROPOSED BITUMINOUS CONCRETE SURFACE COURSE, SUPERPAVE, MIX "D", N70, 2"
- ⑤ PROPOSED BITUMINOUS CONCRETE BINDER COURSE, SUPERPAVE, IL-19, N70, 1 1/4"
- ⑥ PROPOSED AGGREGATE SUBGRADE 12"
- ⑦ PROPOSED COMBINATION CONCRETE CURB & GUTTER, TYPE B-6.24
- ⑧ PROPOSED STEEL PLATE BEAM GUARD RAIL, TYPE A
- ⑨ PROPOSED TOPSOIL FURNISH AND PLACE, 4" AND SODDING, SALT TOLERANT OR SEEDING, CLASS 2A
- ⑩ PROPOSED STRIP REFLECTIVE CRACK CONTROL TREATMENT
- ⑪ PROPOSED BITUMINOUS MATERIALS (PRIME COAT)
- ⑫ PROPOSED AGGREGATE (PRIME COAT)

MIXTURE REQUIREMENTS

	ROADWAYS			DRIVEWAYS	
	BITUMINOUS CONCRETE SURFACE COURSE, SUPERPAVE, MIX "D", N70	BITUMINOUS CONCRETE BINDER COURSE, SUPERPAVE, IL-19, N70	BITUMINOUS SHOULDERS SUPERPAVE 6"	BITUMINOUS CONCRETE SURFACE COURSE, SUPERPAVE, MIX "C", N50	BITUMINOUS BASE COURSE, SUPERPAVE, 8"
AC TYPE :	PG 64-22	PG 64-22	PG 58-22	PG 64-22	PG 58-22
VOIDS :	4% @70 GYR	4% @70 GYR	2% @ 30 GYR	4% @50 GYR	2% @50 GYR
MAX RAP % :	10%	15%	50%	15%	50%

MIXTURE REQUIREMENTS FOR TEMPORARY PAVEMENT

MIXTURE USE(S)	BITUMINOUS CONCRETE SURFACE COURSE, SUPERPAVE, MIX D N50	BITUMINOUS BASE COURSE, SUPERPAVE
THICKNESS:	2"	8"
AC TYPE :	PG 64-22	PG 58-22
VOIDS:	4% @ 50 GYR.	2% @ 50 GYR.
MAX RAP %:	15%	50%

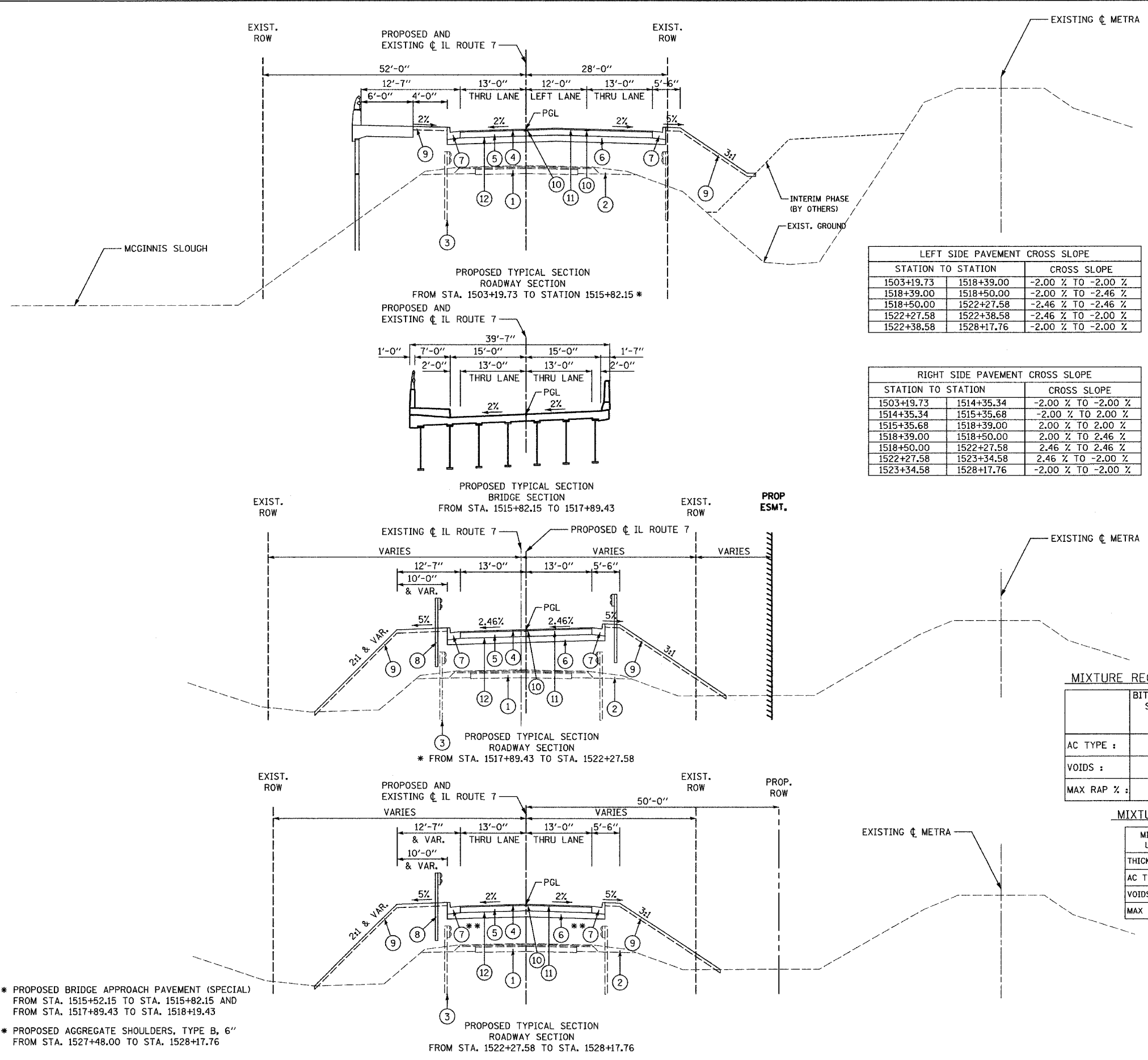
THE CONTRACTOR SHALL HAVE THE OPTION OF USING PCC PAVEMENT 8" OR BITUMINOUS PAVEMENT 10" FOR TEMPORARY PAVEMENT AS SPECIFIED IN THE SPECIAL PROVISION AND THE MIXTURE REQUIREMENT TABLE ABOVE.
 THE TEMPORARY PAVEMENT IS SHOWN ON THE MOT TYPICAL SECTION SHEET.
 THE UNIT WEIGHT USED TO CALCULATE ALL BITUMINOUS MIXTURE IS 112 LB/SQ YD/IN.

REVISIONS	
NAME	DATE

ILLINOIS DEPARTMENT OF TRANSPORTATION
 F.A.U. ROUTE 3576 (IL. ROUTE 7)

IL. ROUTE 7
 PROPOSED TYPICAL SECTION

SCALE: VERT. HORIZ. DATE: MAR. 10, 2006 DRAWN BY BCD CHECKED BY SLR



LEFT SIDE PAVEMENT CROSS SLOPE

STATION TO STATION	CROSS SLOPE
1503+19.73 1518+39.00	-2.00 % TO -2.00 %
1518+39.00 1518+50.00	-2.00 % TO -2.46 %
1518+50.00 1522+27.58	-2.46 % TO -2.46 %
1522+27.58 1522+38.58	-2.46 % TO -2.00 %
1522+38.58 1528+17.76	-2.00 % TO -2.00 %

RIGHT SIDE PAVEMENT CROSS SLOPE

STATION TO STATION	CROSS SLOPE
1503+19.73 1514+35.34	-2.00 % TO -2.00 %
1514+35.34 1515+35.68	-2.00 % TO 2.00 %
1515+35.68 1518+39.00	2.00 % TO 2.00 %
1518+39.00 1518+50.00	2.00 % TO 2.46 %
1518+50.00 1522+27.58	2.46 % TO 2.46 %
1522+27.58 1523+34.58	2.46 % TO -2.00 %
1523+34.58 1528+17.76	-2.00 % TO -2.00 %

PLOT DATE = 3/6/2006
 FILE NAME = N:\IL_7\Proposed_Plan\Typical_Sections\PTS.dgn
 PLOT BY = BCD
 CHECKED BY = SLR
 REFERENCE =

* PROPOSED BRIDGE APPROACH PAVEMENT (SPECIAL)
 FROM STA. 1515+52.15 TO STA. 1515+82.15 AND
 FROM STA. 1517+89.43 TO STA. 1518+19.43
 ** PROPOSED AGGREGATE SHOULDERS, TYPE B, 6"
 FROM STA. 1527+48.00 TO STA. 1528+17.76