

STATE OF ILLINOIS
DEPARTMENT OF TRANSPORTATION

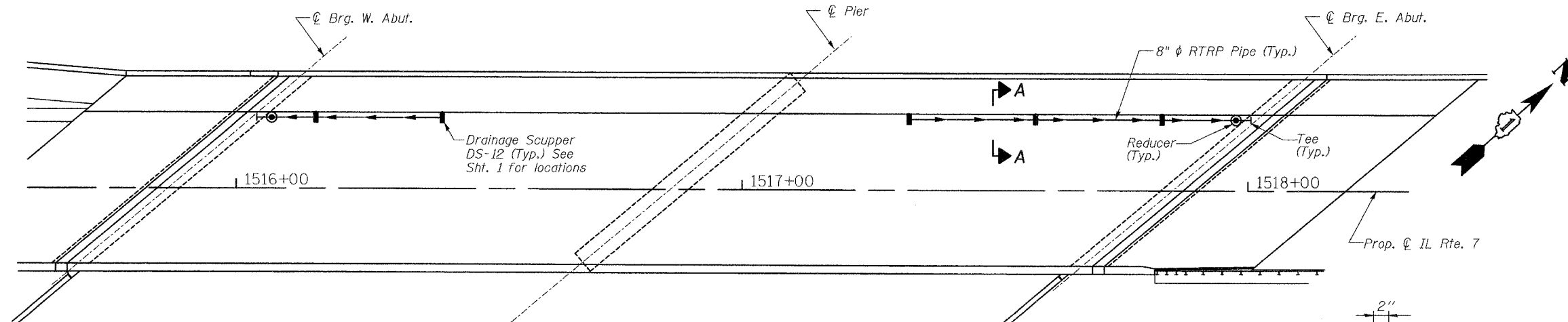
| | | | | |
|-----------------------|---------|-------------------|--------------|-----------|
| ROUTE NO. | SECTION | COUNTY | TOTAL SHEETS | SHEET NO. |
| FAU 3578 | 1327 B | COOK | 108 | 38 |
| FED. ROAD DIST. NO. 7 | S.LINER | FED. AID PROJECT- | | |

SHEET NO. 10
35 SHEETS

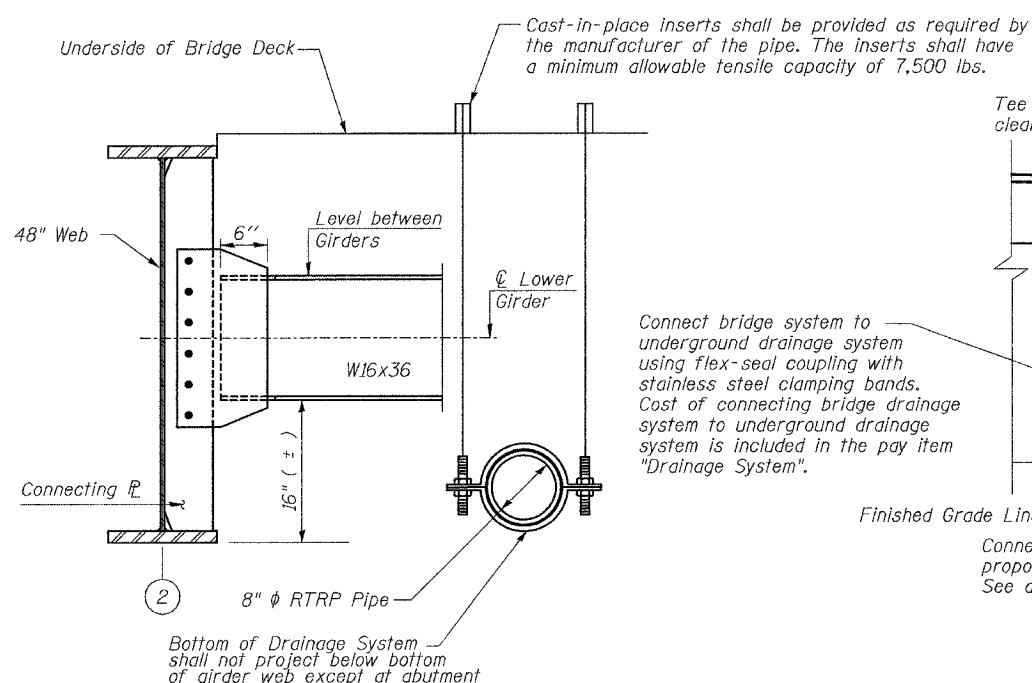
**SUPERSTRUCTURE
BILL OF MATERIAL**

| Bar | No. | Size | Length | Shape |
|----------------------------------|-----|---------|--------|-------|
| a(E) | 565 | #5 | 39'-2" | — |
| a ₂ (E) | 322 | #6 | 4'-6" | — |
| a ₃ (E) | 40 | #5 | 2'-0" | — |
| b(E) | 372 | #5 | 30'-4" | — |
| b ₁ (E) | 40 | #6 | 56'-0" | — |
| b ₂ (E) | 264 | #5 | 26'-9" | — |
| b ₃ (E) | 18 | #8 | 36'-9" | — |
| c(E) | 204 | #5 | 2'-5" | ┌ |
| c ₁ (E) | 202 | #5 | 7'-8" | — |
| c ₂ (E) | 2 | #5 | 10'-9" | — |
| d(E) | 221 | #5 | 3'-0" | ┌ |
| d ₁ (E) | 221 | #5 | 2'-5" | ┌ |
| d ₂ (E) | 221 | #4 | 3'-0" | ┌ |
| d ₃ (E) | 221 | #4 | 3'-7" | ┌ |
| d ₄ (E) | 203 | #4 | 4'-8" | ┌ |
| d ₅ (E) | 203 | #6 | 4'-3" | ┌ |
| d ₆ (E) | 40 | #4 | 2'-0" | ┌ |
| e(E) | 24 | #4 | 13'-8" | — |
| e ₁ (E) | 120 | #4 | 17'-1" | — |
| e ₂ (E) | 12 | #5 | 30'-1" | — |
| e ₃ (E) | 4 | #5 | 13'-8" | — |
| e ₄ (E) | 12 | #8 | 31'-5" | — |
| e ₅ (E) | 4 | #8 | 13'-8" | — |
| x(E) | 84 | #5 | 4'-1" | ┌ |
| Reinforcement Bars, Epoxy Coated | | Pound | 59,800 | |
| Concrete Superstructure | | Cu. Yd. | 301.6 | |
| Aluminum Railing, Type L | | Foot | 202 | |

Reinforcement bars designated (E) shall be epoxy coated.

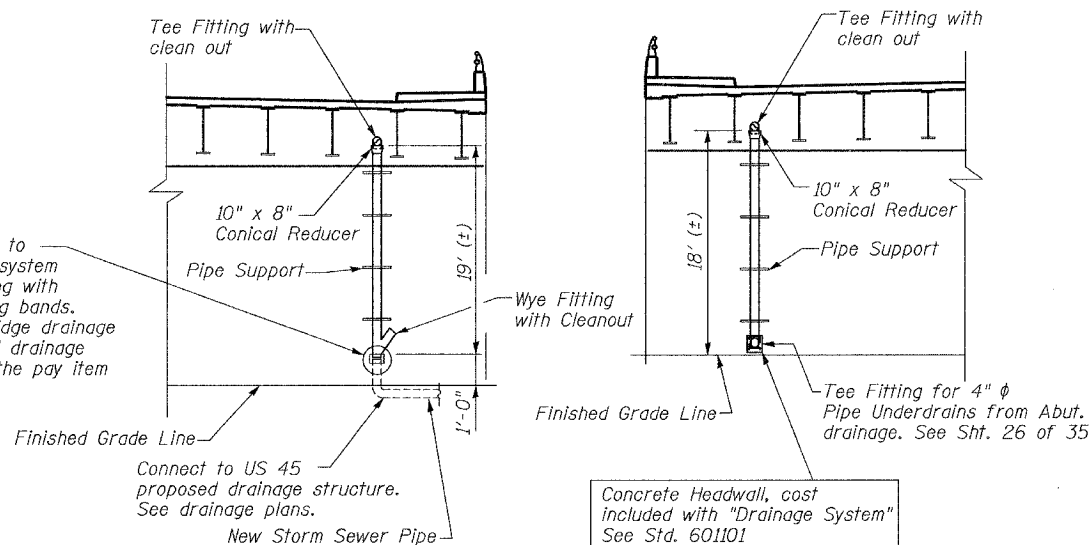


PLAN



SECTION A-A

Connect bridge system to underground drainage system using flex-seal coupling with stainless steel clamping bands. Cost of connecting bridge drainage system to underground drainage system is included in the pay item "Drainage System".

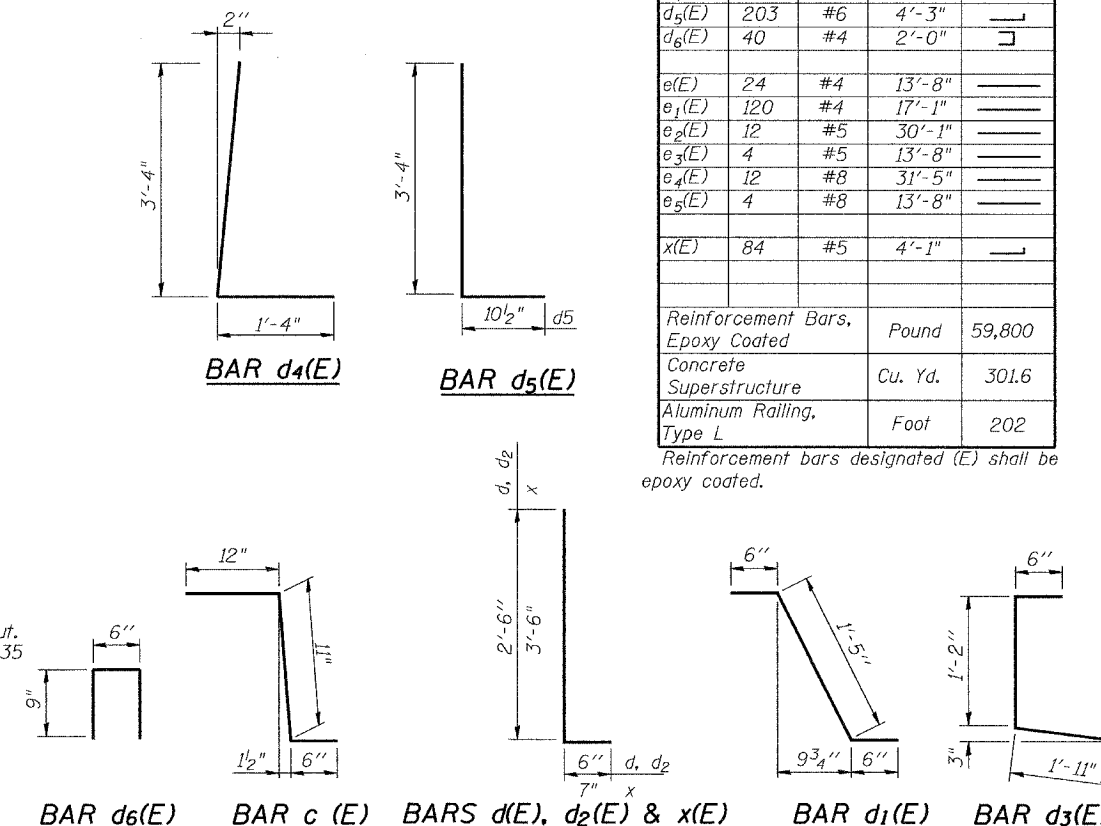


**WEST ABUTMENT
(Looking Southwest)**

**EAST ABUTMENT
(Looking Upstation, Northeast)**

DRAINAGE SYSTEM

Notes:
The color of the pipe and fittings shall be gray, as approved by the Engineer. See Special Provision "Drainage System".



| | |
|----------|-----|
| DESIGNED | JJI |
| CHECKED | SRT |
| DRAWN | MD |
| CHECKED | SRT |

B Bollinger, Lach & Associates, Inc.

DRAINAGE SYSTEM & BAR LIST

IL 7 (SOUTHWEST HIGHWAY) OVER
US 45 (LA GRANGE ROAD)
F.A.U. ROUTE 3578 SECTION 1327B
COOK COUNTY
STA. 1516+85.79
STRUCTURE NUMBER 016-2847