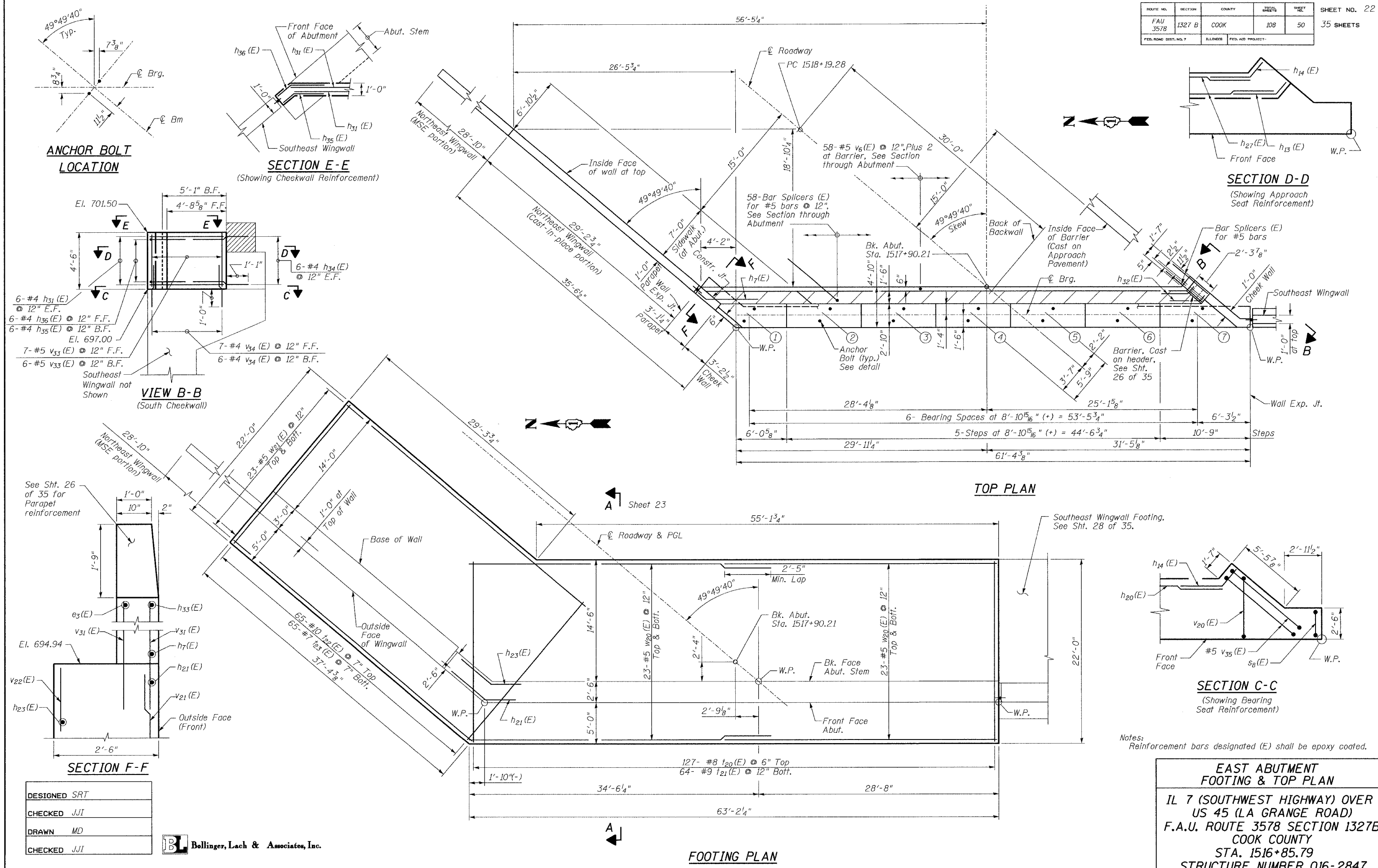


ROUTE NO.	SECTION	COUNTY	TOTAL SHEETS	SHEET NO.
FAU 3578	1327 B	COOK	108	50
FED. ROAD DIST. NO. 7	ILLINOIS	FED. AID PROJECT		

SHEET NO. 22
35 SHEETS



DESIGNED	SRT
CHECKED	JJI
DRAWN	MD
CHECKED	JJI

B Bollinger, Lach & Associates, Inc.

EAST ABUTMENT FOOTING & TOP PLAN
 IL 7 (SOUTHWEST HIGHWAY) OVER US 45 (LA GRANGE ROAD)
 F.A.U. ROUTE 3578 SECTION 1327B
 COOK COUNTY
 STA. 1516+85.79
 STRUCTURE NUMBER 016-2847

Notes:
 Reinforcement bars designated (E) shall be epoxy coated.