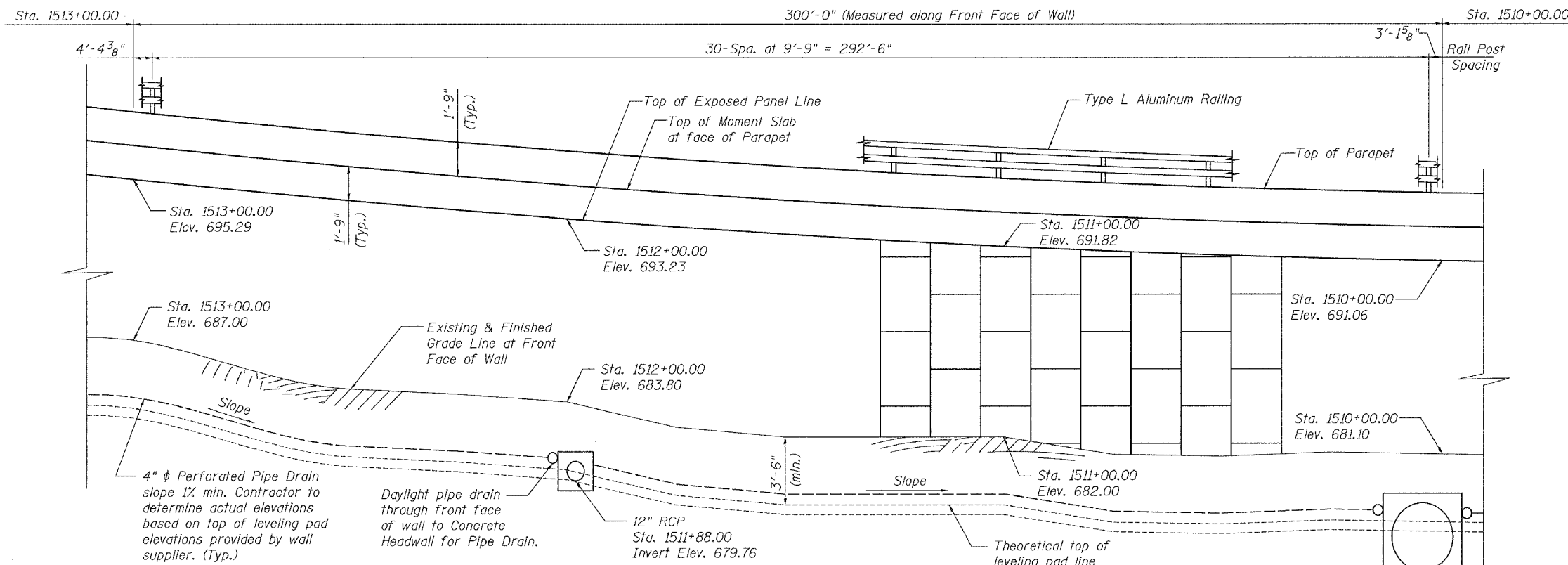
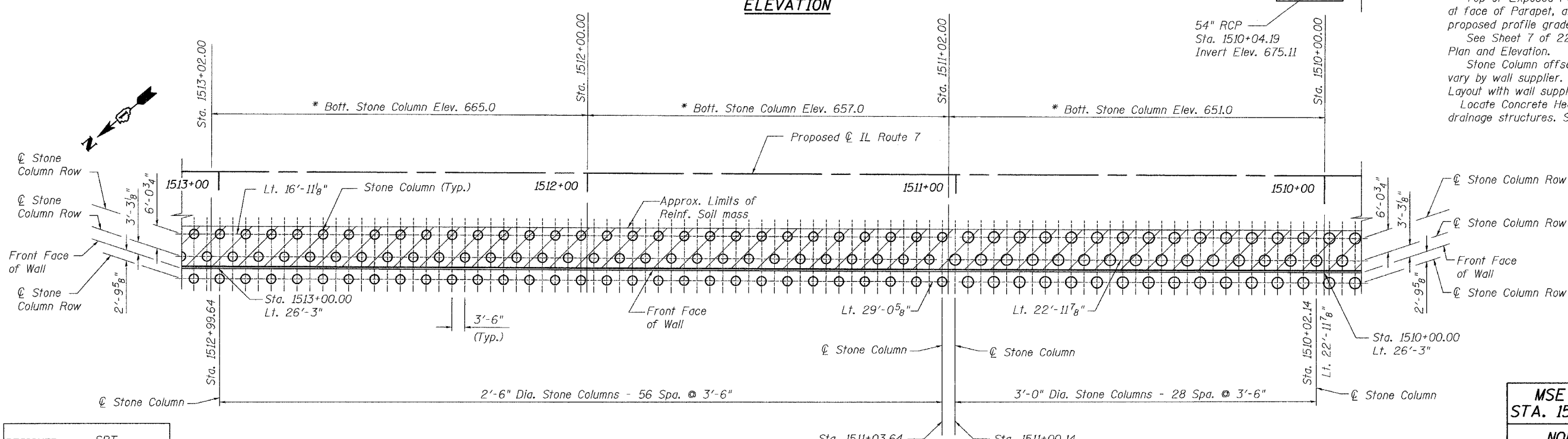


ROUTE NO.	SECTION	COUNTY	TOTAL SHEETS	SHEET NO.
FAU 3578	1327B	COOK	108	67
FED. ROAD DIST. NO. 7	ILLINOIS	FED. AID PROJECT-		



**ELEVATION**

Notes:  
 Sta. & offsets are given to the front face of wall, Lengths are measured along the front face.  
 Sta. & offsets given for Stone Columns are to the center of the Stone Column.  
 Top of Exposed Panel Line, Top of Moment Slab at face of Parapet, and Top of Parapet follow the proposed profile grade of IL Route 7.  
 See Sheet 7 of 22 for Parapet and Sidewalk Plan and Elevation.  
 Stone Column offset from front face of wall may vary by wall supplier. Coordinate Stone Column Layout with wall supplier.  
 Locate Concrete Headwall free of proposed drainage structures. See Drainage Plans.



**PLAN**

\* Bott. Stone Column Elevations are for bidding purposes. Final Elevations to be verified at the time of construction. Stone Columns shall be predrilled to elevation 675.0.

DESIGNED	SRT
CHECKED	JJI
DRAWN	GM
CHECKED	JJI

**Bollinger, Lach & Associates, Inc.**

**MSE WALL PLAN & ELEVATION  
 STA. 1513+00.00 TO STA. 1510+00.00  
 NORTHWEST RETAINING WALL  
 IL. 7 (Southwest Highway)  
 F.A.U. ROUTE 3578 SECTION 1327B  
 COOK COUNTY  
 STA. 1505+40.00 TO STA. 1515+78.21  
 STRUCTURE NUMBER 016-W970**