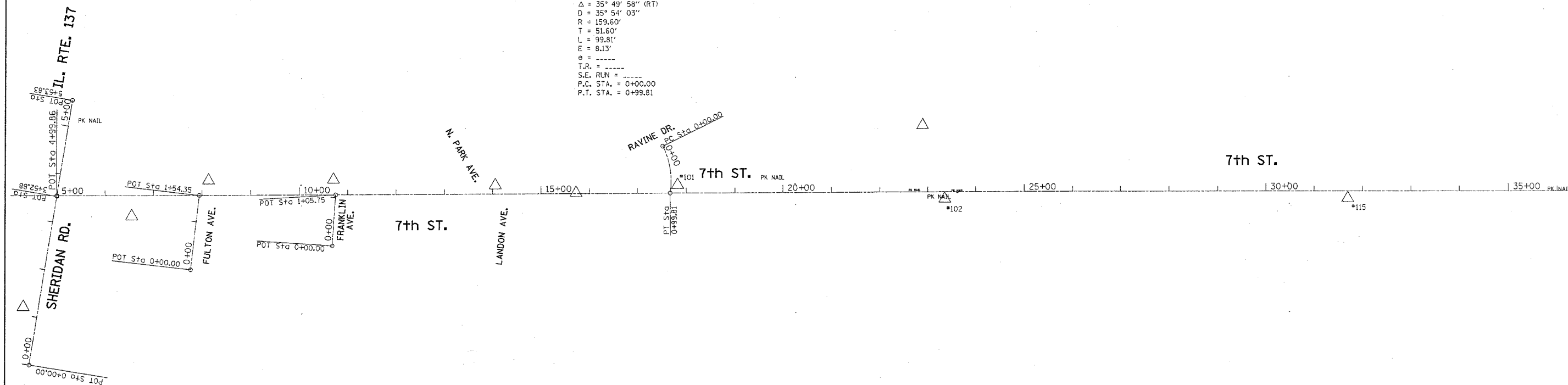


F.A. RTE.	SECTION	COUNTY	TOTAL SHEETS	SHEET NO.
* 2004-025 RS	LAKE	LAKE	116	17
STA.		TO STA.		
FED. ROAD DIST. NO.	ILLINOIS	FED. AID PROJECT		
* PARK ROADS CONTRACT NO. 62745				
IDNR FILE NO. 2-03-025				

EXIST. CURVE E\_SHER-1  
 PI STA. = 0+51.60  
 $\Delta = 35^\circ 49' 58''$  (RT)  
 $D = 35^\circ 54' 03''$   
 $R = 159.60'$   
 $T = 51.60'$   
 $L = 99.81'$   
 $E = 8.13'$   
 $\theta = \text{-----}$   
 $T.R. = \text{-----}$   
 $S.E. RUN = \text{-----}$   
 $P.C. STA. = 0+00.00$   
 $P.T. STA. = 0+99.81$



TIE POINTS

#101	N=2118815.46 E=1123215.71 ELEV.=599.615
#102	N=2118785.34 E=1123769.21 ELEV.=598.845
#115	N=2118784.954 E=1124602.699 ELEV.=589.989

REVISIONS	
NAME	DATE

ILLINOIS DEPARTMENT OF TRANSPORTATION

NORTH POINT MARINA  
ALIGNMENT AND TIES

SCALE: VERT. \_\_\_\_\_  
HORIZ. \_\_\_\_\_

DATE \_\_\_\_\_

DRAWN BY \_\_\_\_\_  
CHECKED BY \_\_\_\_\_

PLT DATE = 1/17/2006  
 PLOT SCALE = 1/8"=20' (HORIZ) / 1"=40' (VERT)  
 USER NAME = drivakogon

MATCHLINE STA. 37+00 (7TH ST.)