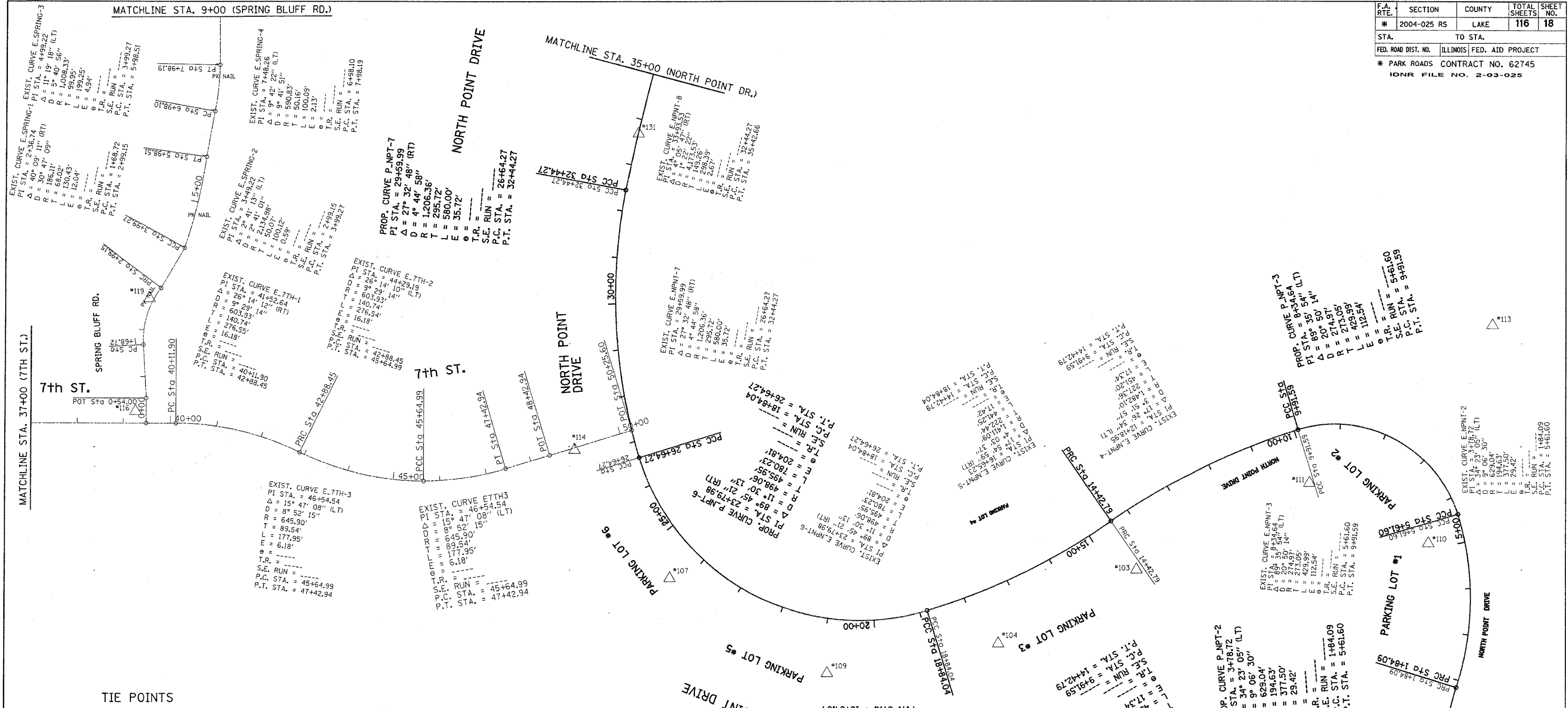


F.A. RTE.	SECTION	COUNTY	TOTAL SHEETS	SHEET NO.
* 2004-025 RS	LAKE	ILLINOIS	116	18
STA.		TO STA.		
FED. ROAD DIST. NO.		ILLINOIS FED. AID PROJECT		
* PARK ROADS CONTRACT NO. 62745				
IDNR FILE NO. 2-03-025				



TIE POINTS

03	PK NAIL N=2118483.942 E=1127511.812 ELEV.=592.331	113	CHISELED "X" N=2119009.762 E=1128275.649 ELEV.=592.409
04	PK NAIL N=2118324.990 E=1127214.900 ELEV.=592.315	114	N=2118742.60 E=1126303.37 ELEV.=591.53
05	IRON ROD WITH CAP N=2118081.280 E=1128197.826 ELEV.=597.769	116	N=2118825.645 E=1125359.174 ELEV.=588.285
07	PK NAIL N=2118465.761 E=1126507.025 ELEV.=592.050	119	PK NAIL N=2119068.492 E=1125388.042 ELEV.=589.111
09	PK NAIL N=2118261.428 E=1126846.395 ELEV.=591.627	131	N=2119420.118 E=1126438.665 ELEV.=591.222
10	PK NAIL N=2118540.909 E=1128140.476 ELEV.=594.700		
11	PK NAIL N=2118670.621 E=1127855.646 ELEV.=593.917		

REVISIONS	
NAME	DATE

ILLINOIS DEPARTMENT OF TRANSPORTATION

**NORTH POINT MARINA
ALIGNMENT AND TIES**

SCALE: VERT.
HORIZ.

DATE

DRAWN BY
CHECKED BY

PLOT DATE = 1/1/2006
FILE NAME = c:\projects\2004\20040205\20040205.dwg
PLOT SCALE = 1/8"=1'-0"
USER NAME = dr\vkoshg