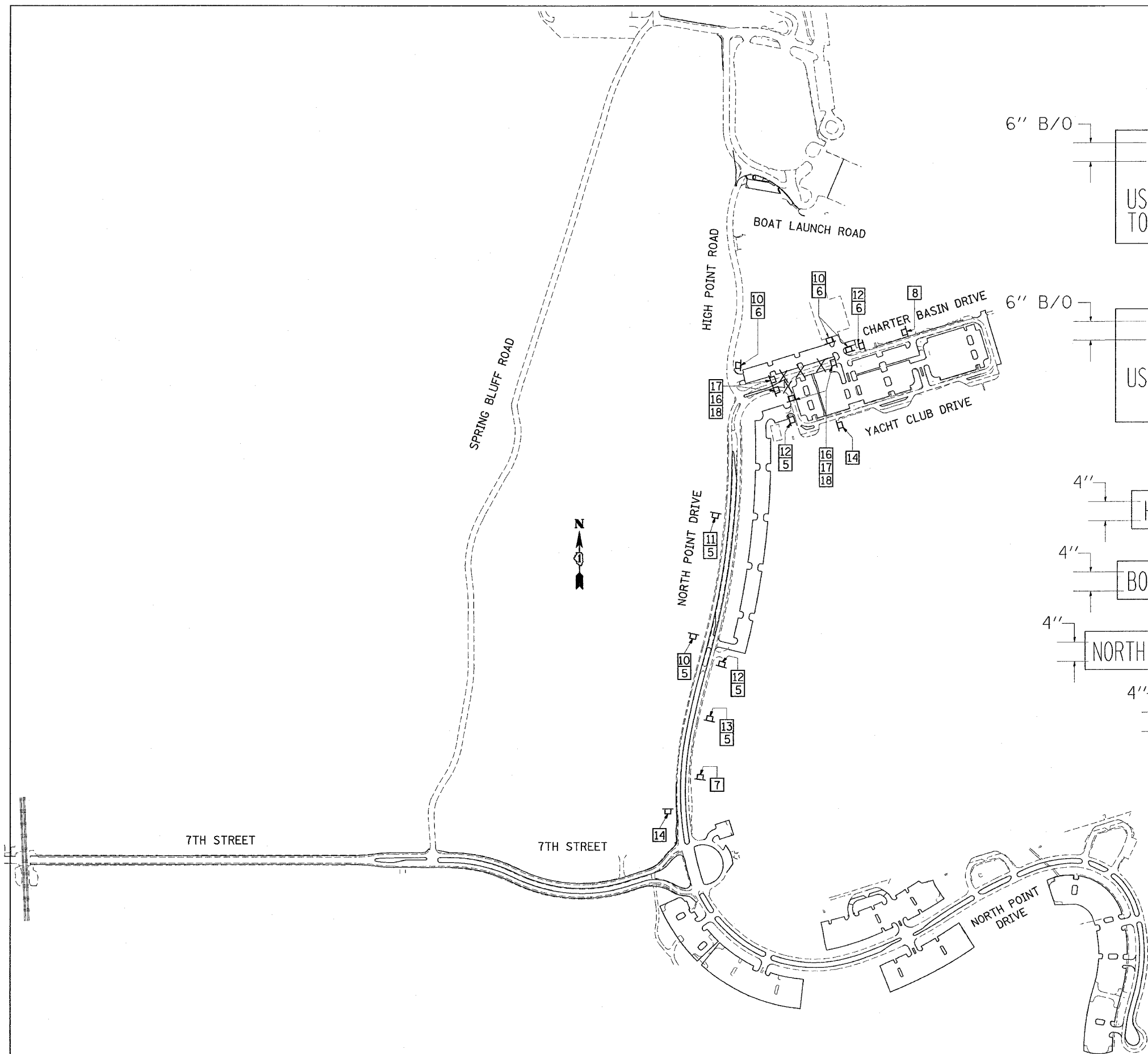


F.A.I. RTE.	SECTION	COUNTY	TOTAL SHEETS	SHEET NO.
*	2004-025 RS	LAKE	116	23
FED. ROAD DIST. NO. 1		ILLINOIS	FED. AID PROJECT	

* PARK ROADS IDNR File No. 2-03-025
D91-191-04



LEGEND

- ① HIGH POINT ROAD CLOSED
USE SPRING BLUFF RD.
TO BOAT LAUNCH AREA
(72"X48")
- ② HIGH POINT ROAD CLOSED
USE SPRING BLUFF RD.
TO 7TH STREET
(72"X48")
- ③ HIGH POINT ROAD (4")
- ④ BOAT LAUNCH AREA (4")
- ⑤ NORTH MARINA PARKING (4")
- ⑥ 7TH STREET (4")
- ⑦ W 20-2 (48"X48")
- ⑧ W 20-3 (48"X48")
- ⑨
- ⑩ M4-9L (30"X24")
- ⑪ M4-9L (30"X24")
- ⑫ M4-9R (30"X24")
- ⑬ M4-9R (30"X24")
- ⑭ M4-8a (24"X18")
- ⑮ M4-10 (48"X18")
- ⑯ M4-10 (48"X18")
- ⑰ R11-2 (48"X30")
- ⑱ 2-TYPE III BARRICADE WITH FLASHING LIGHTS

X = ROAD CLOSED TO TRAFFIC

REVISIONS	
NAME	DATE

ILLINOIS DEPARTMENT OF TRANSPORTATION
PARK ROADS
ILLINOIS BEACH STATE PARK
NORTH POINT MARINA
DETOUR PLAN #2

SCALE: DATE
DRAWN BY: CDT
CHECKED BY:

PLOT DATE = 1/11/2006
FILE NAME = c:\projects\p134482\design\p134482.dwg
PLOT SCALE = 1/8"=1'-0"
REFERENCE = REF#