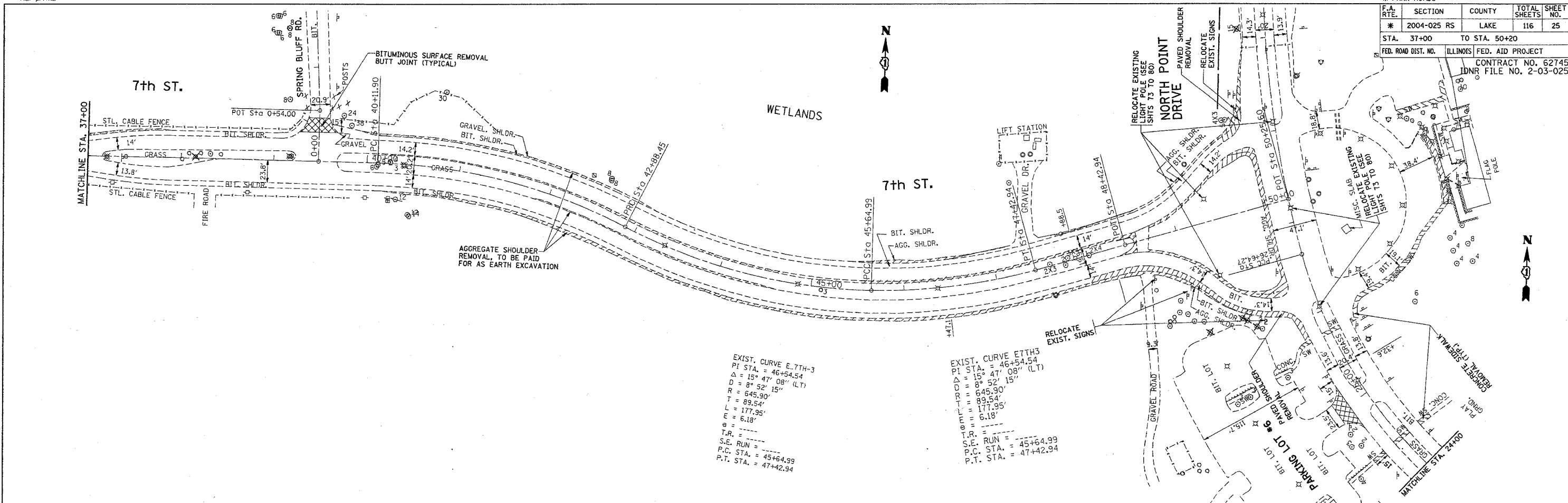


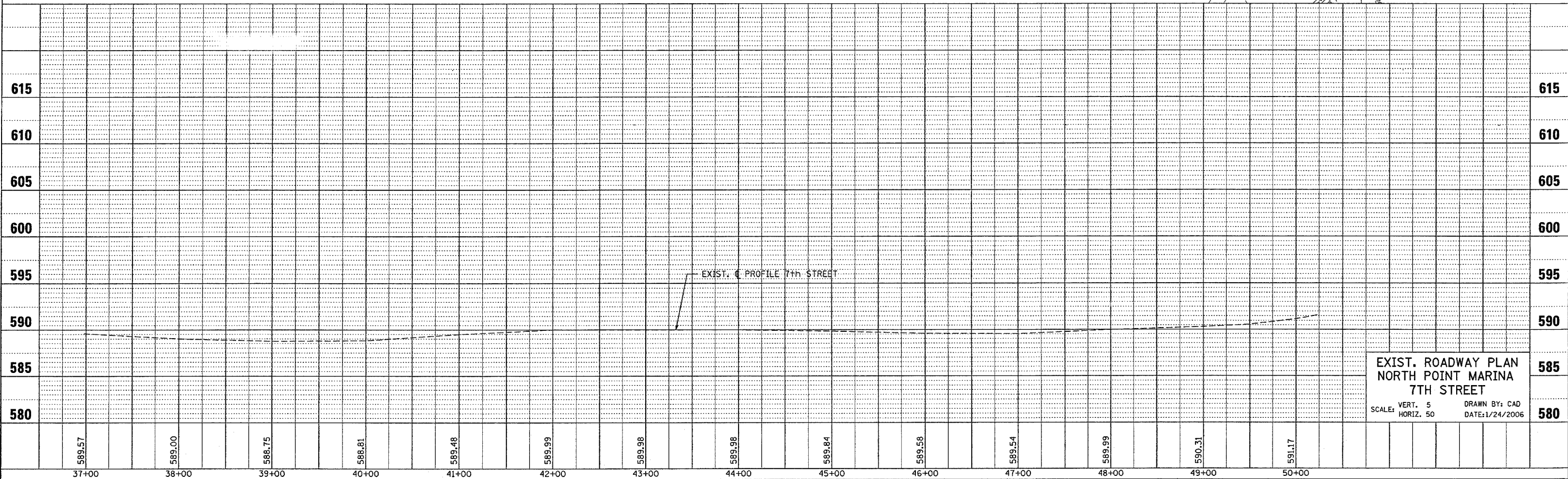
*REF-107112
 *REF-p7112

F.A. RTE.	SECTION	COUNTY	TOTAL SHEETS	SHEET NO.
* 2004-025 RS	LAKE	116	25	
STA. 37+00	TO STA. 50+20			
FED. ROAD DIST. NO.	ILLINOIS	FED. AID PROJECT		
		CONTRACT NO. 62745 DNR FILE NO. 2-03-025		



PLAN	SURVEYED	DATE
NOTE BOOK NO.	BY	
	CHECKED	
	DATE	

PROFILE	SURVEYED	DATE
NOTE BOOK NO.	BY	
	CHECKED	
	DATE	



EXIST. ROADWAY PLAN
 NORTH POINT MARINA
 7TH STREET
 SCALE: VERT. 5' HORIZ. 50'
 DRAWN BY: CAD
 DATE: 1/24/2006