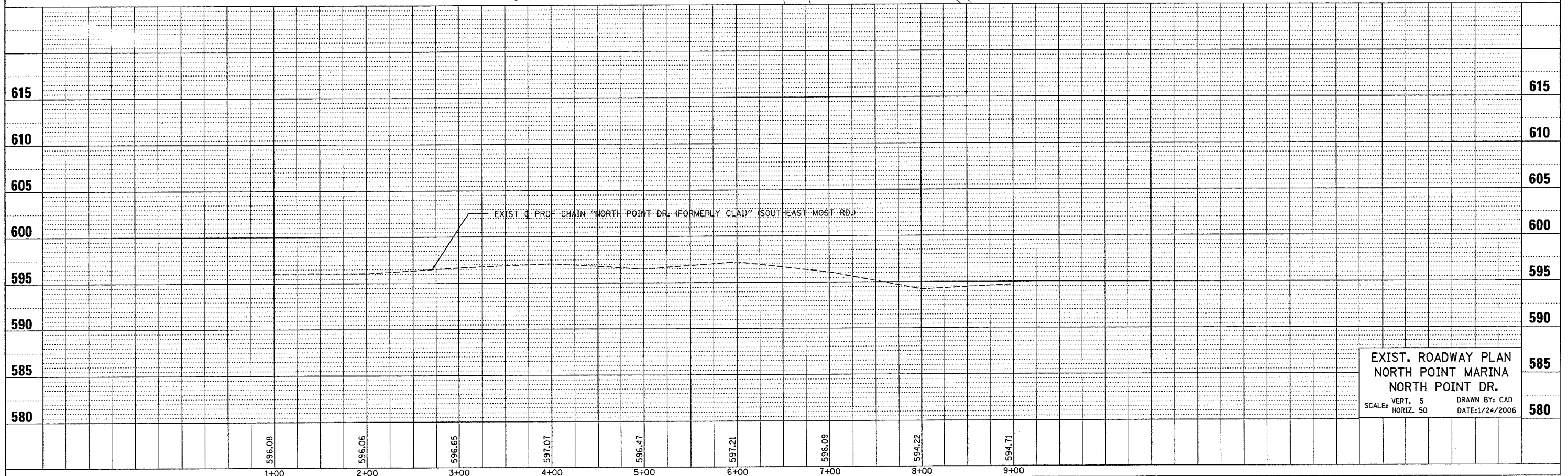
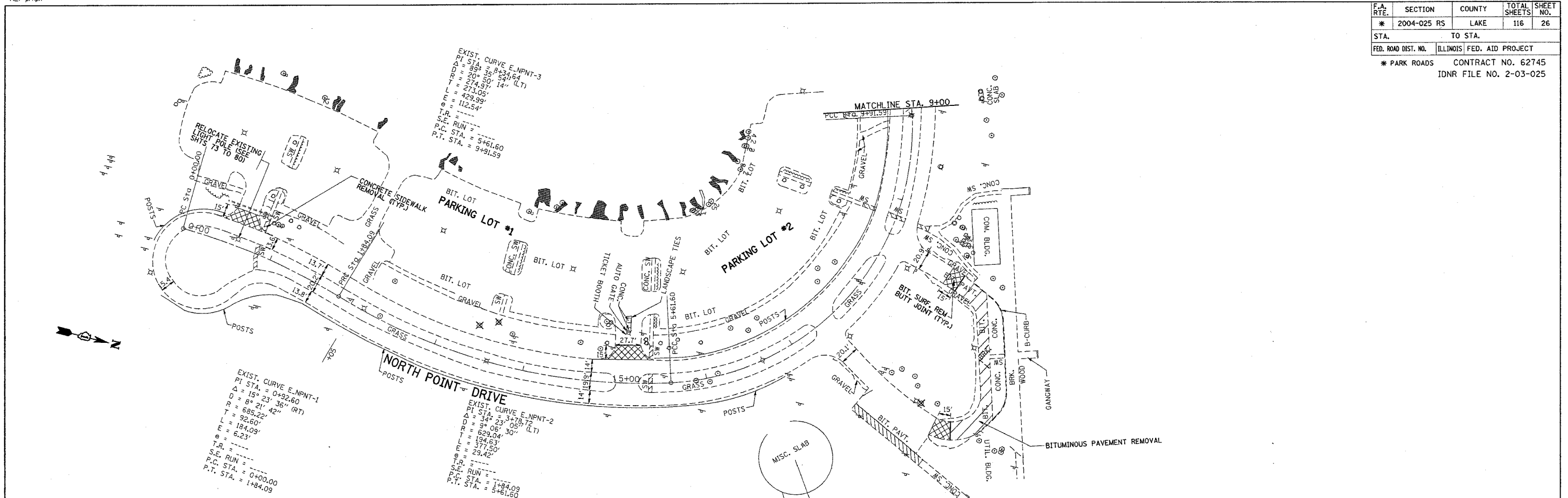


*REF-topnpt
*REF-pl npt

F.A. RTE.	SECTION	COUNTY	TOTAL SHEETS	SHEET NO.
* 2004-025 RS	LAKE	ILLINOIS	116	26
STA.	TO STA.			
FED. ROAD DIST. NO.	ILLINOIS FED. AID PROJECT			
* PARK ROADS		CONTRACT NO. 62745		
IDNR FILE NO. 2-03-025				

DATE	BY

DATE	BY



EXIST. ROADWAY PLAN
 NORTH POINT MARINA
 NORTH POINT DR.
 SCALE: VERT. 5
 HORIZ. 50
 DRAWN BY: CAD
 DATE: 1/24/2006