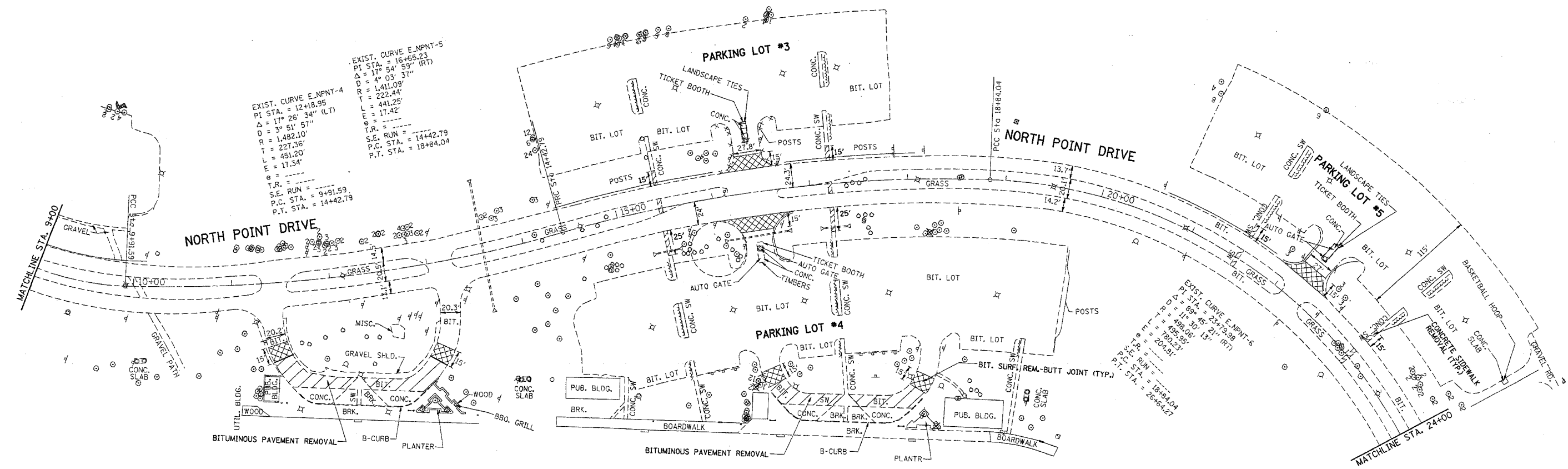


*REF-10012
*REF-10012

F.A. RTE.	SECTION	COUNTY	TOTAL SHEETS	SHEET NO.
* 2004-025 RS	LAKE	LAKE	116	27
STA. 9+00	TO STA. 24+00			
FED. ROAD DIST. NO.	ILLINOIS	FED. AID PROJECT		
* PARK ROADS	CONTRACT NO. 62745			
	IDNR FILE NO. 2-03-025			

DATE	BY

DATE	BY



EXIST. CURVE E.NPNT-4
PI STA. = 12+18.95
Δ = 17° 28' 34" (LT)
D = 3° 51' 57"
R = 1,482.10'
T = 227.36'
L = 451.20'
E = 17.34'

EXIST. CURVE E.NPNT-5
PI STA. = 16+65.23
Δ = 17° 54' 59" (RT)
D = 4° 03' 37"
R = 1,411.09'
T = 222.44'
L = 441.25'
E = 17.42'

T.R. = ---
S.E. RUN = ---
P.C. STA. = 9+91.59
P.T. STA. = 14+42.79

EXIST. CURVE E.NPNT-6
PI STA. = 23+29.98
Δ = 89° 55' 21" (RT)
D = 1° 30' 13"
R = 495.95'
T = 180.23'
L = 201.81'

T.R. = ---
S.E. RUN = ---
P.C. STA. = 18+44.04
P.T. STA. = 25+64.27

STATION	595	590	585	580
9+00	594.71			
10+00	593.84			
11+00	592.94			
12+00	592.03			
13+00	591.12			
14+00	589.87			
15+00	591.09			
16+00	591.09			
17+00	591.45			
18+00	592.20			
19+00	592.83			
20+00	592.59			
21+00	591.97			
22+00	591.51			
23+00	591.59			
24+00	592.08			

EXIST. ROADWAY PLAN
NORTH POINT MARINA
NORTH POINT DR.
SCALE: VERT. 5
HORIZ. 50
DRAWN BY: CAD
DATE: 1/24/2006