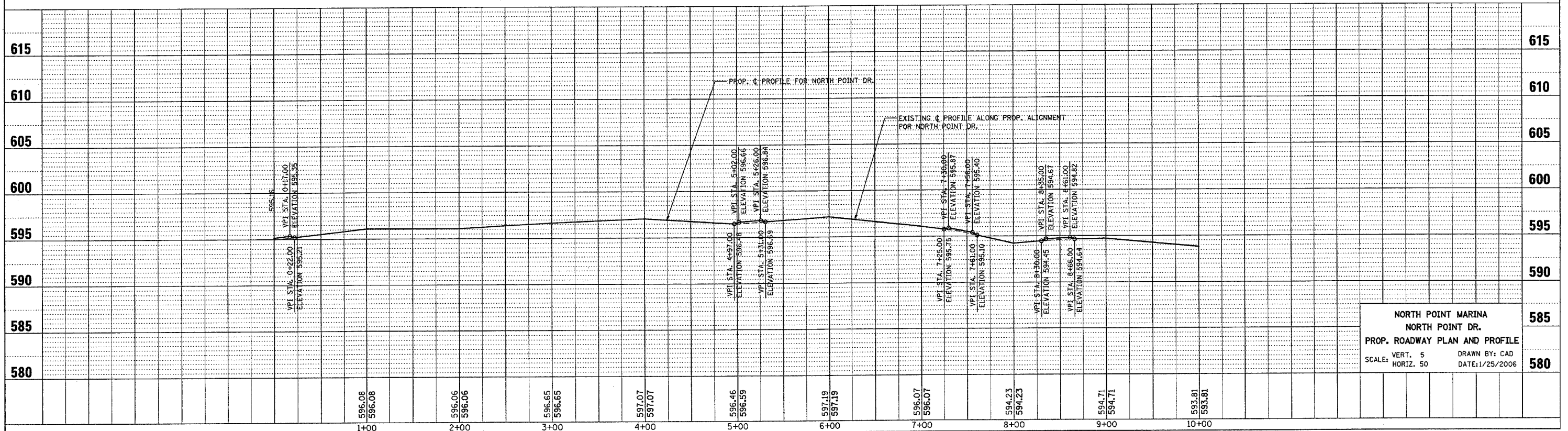
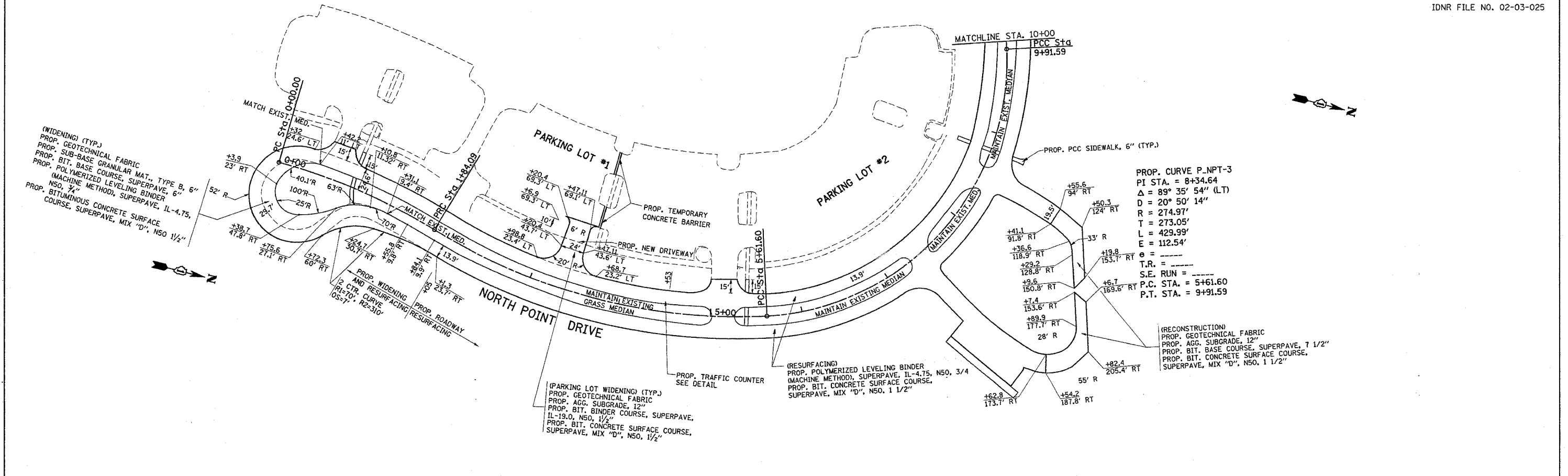


*REF-topnpt
*REF-pl ntpl

F.A. RTE.	SECTION	COUNTY	TOTAL SHEETS	SHEET NO.
*	2004-025 RS	LAKE	116	36
STA. 0+00		TO STA. 9+00		
FED. ROAD DIST. NO.		ILLINOIS FED. AID PROJECT		
* PARK ROADS		CONTRACT NO. 62745		
		IDNR FILE NO. 02-03-025		



**NORTH POINT MARINA
 NORTH POINT DR.
 PROP. ROADWAY PLAN AND PROFILE**
 SCALE: VERT. 5 DRAWN BY: CAD
 HORIZ. 50 DATE: 1/25/2006