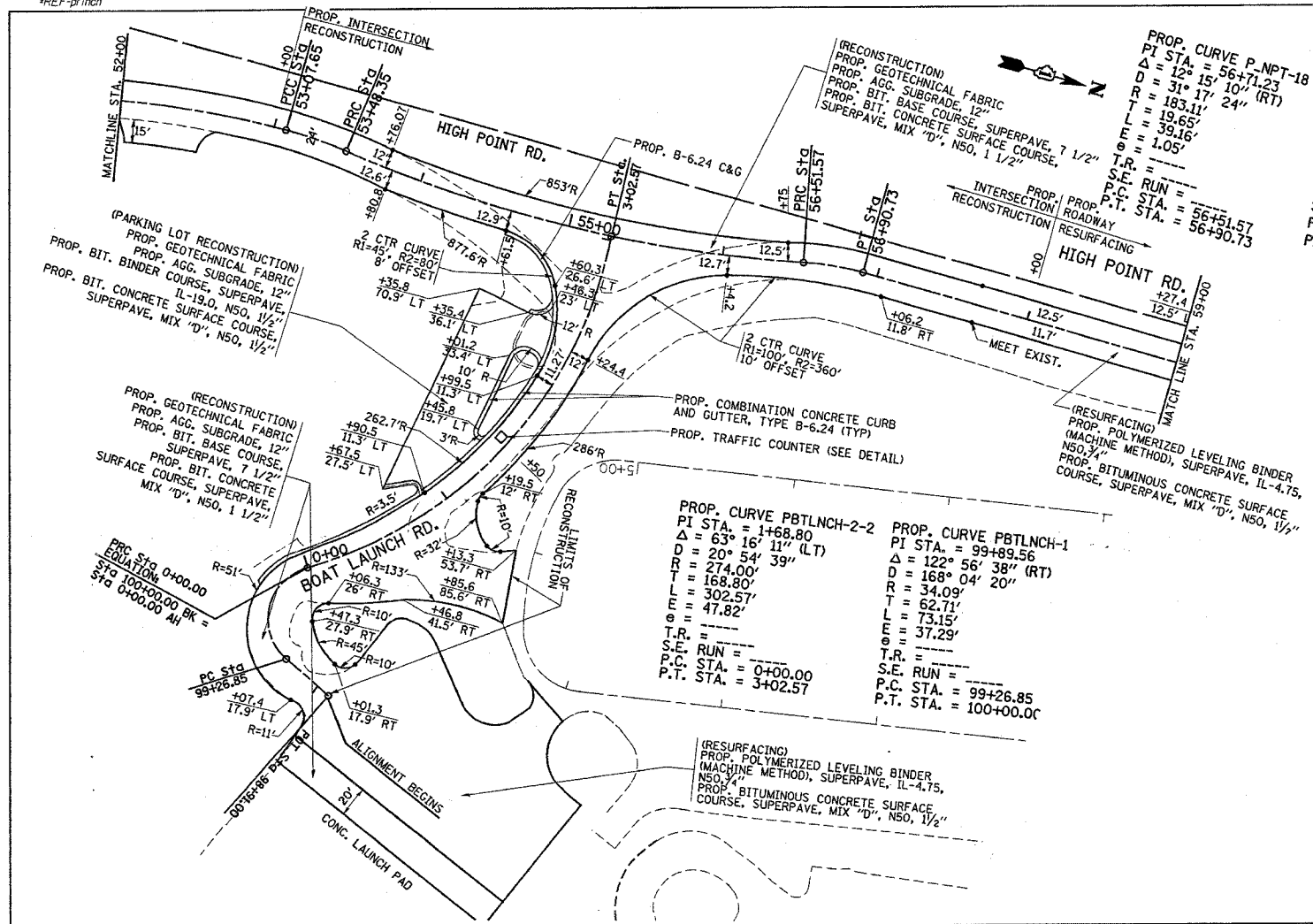
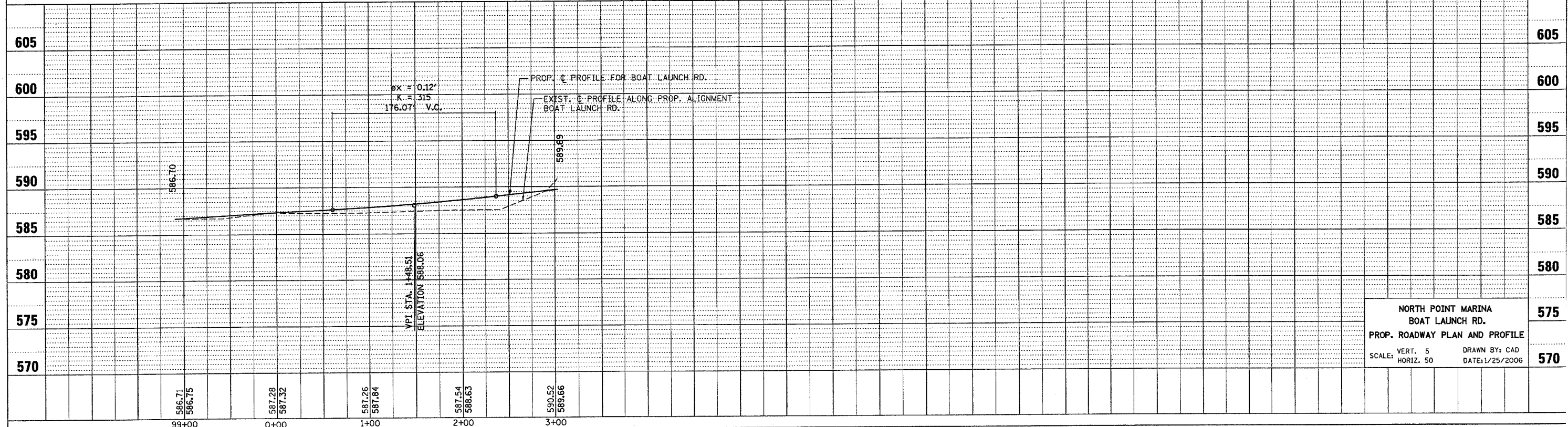


*REF-top/inch
*REF-pf/inch



F.A. RTE.	SECTION	COUNTY	TOTAL SHEETS	SHEET NO.
*	2004-025 RS	LAKE	116	42
STA.		TO STA.		
FED. ROAD DIST. NO.		ILLINOIS FED. AID PROJECT		
* PARK ROADS		CONTRACT NO. 62745		
		IDNR FILE NO. 02-03-025		



NORTH POINT MARINA
BOAT LAUNCH RD.
PROP. ROADWAY PLAN AND PROFILE
SCALE: VERT. 5
HORIZ. 50
DRAWN BY: CAD
DATE: 1/25/2006