

F.A. RTE.	SECTION	COUNTY	TOTAL SHEETS	SHEET NO.
*	2004-025-RS	LAKE	116	61
STA. TO STA.		TO STA.		
FED. ROAD DIST. NO.		ILLINOIS	FED. AID PROJECT	

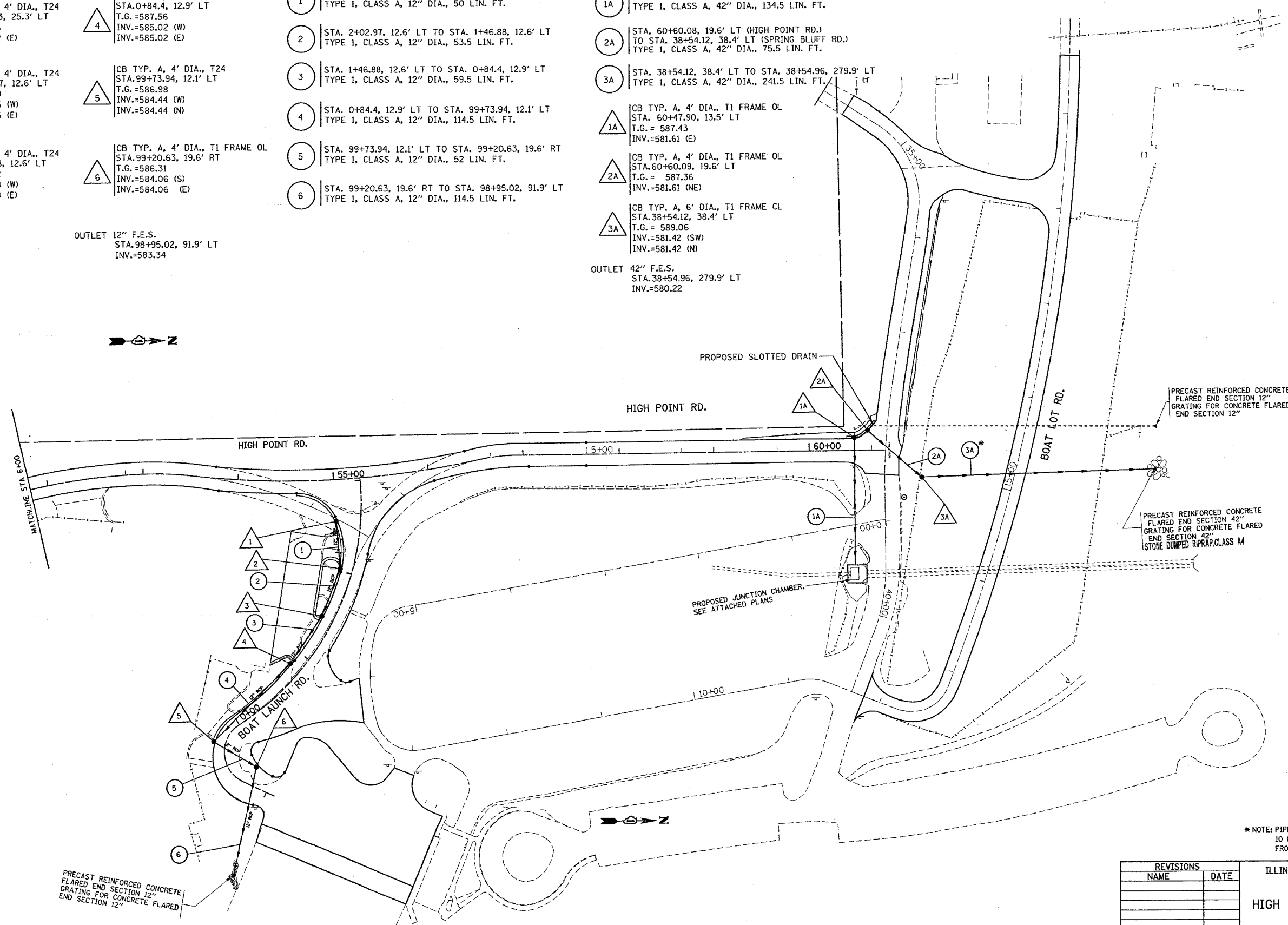
* PARK ROADS
IDNR FILE NO. 2-03-025

- 1 CB TYP. A, 4' DIA., T24
STA. 2+54.83, 25.3' LT
T.G. = 589.36
INV. = 586.82 (E)
- 2 CB TYP. A, 4' DIA., T24
STA. 2+02.97, 12.6' LT
T.G. = 588.90
INV. = 586.36 (W)
- 3 CB TYP. A, 4' DIA., T24
STA. 1+46.88, 12.6' LT
T.G. = 588.22
INV. = 585.68 (W)
- 4 CB TYP. A, 4' DIA., T24
STA. 0+84.4, 12.9' LT
T.G. = 587.56
INV. = 585.02 (W)
- 5 CB TYP. A, 4' DIA., T24
STA. 99+73.94, 12.1' LT
T.G. = 586.98
INV. = 584.44 (W)
- 6 CB TYP. A, 4' DIA., T1 FRAME OL
STA. 99+20.63, 19.6' RT
T.G. = 586.31
INV. = 584.06 (S)

- 1A STA. 60+47.90, 13.5' LT TO STA. 60+47.48, 120.5' LT
TYPE 1, CLASS A, 42" DIA., 134.5 LIN. FT.
- 2A STA. 60+60.08, 19.6' LT (HIGH POINT RD.)
TO STA. 38+54.12, 38.4' LT (SPRING BLUFF RD.)
TYPE 1, CLASS A, 42" DIA., 75.5 LIN. FT.
- 3A STA. 38+54.12, 38.4' LT TO STA. 38+54.96, 279.9' LT
TYPE 1, CLASS A, 42" DIA., 241.5 LIN. FT.
- 1A CB TYP. A, 4' DIA., T1 FRAME OL
STA. 60+47.90, 13.5' LT
T.G. = 587.43
INV. = 581.61 (E)
- 2A CB TYP. A, 4' DIA., T1 FRAME OL
STA. 60+60.09, 19.6' LT
T.G. = 587.36
INV. = 581.61 (NE)
- 3A CB TYP. A, 6' DIA., T1 FRAME CL
STA. 38+54.12, 38.4' LT
T.G. = 589.06
INV. = 581.42 (SW)
INV. = 581.42 (N)

OUTLET 12" F.E.S.
STA. 98+95.02, 91.9' LT
INV. = 583.34

OUTLET 42" F.E.S.
STA. 38+54.96, 279.9' LT
INV. = 580.22



PRECAST REINFORCED CONCRETE
FLARED END SECTION 12"
GRATING FOR CONCRETE FLARED
END SECTION 12"

PRECAST REINFORCED CONCRETE
FLARED END SECTION 42"
GRATING FOR CONCRETE FLARED
END SECTION 42"
STONE DUMPED RIPRAP CLASS A4

*NOTE: PIPE 3A IS TO BE PLACED WITH A
10 FOOT HORIZONTAL SEPARATION
FROM THE EXISTING WATER MAIN.

REVISIONS	
NAME	DATE

ILLINOIS DEPARTMENT OF TRANSPORTATION
NORTH POINT MARINA
HIGH POINT RD., BOAT LAUNCH RD.
& BOAT LOT ROAD
PROPOSED DRAINAGE PLAN

SCALE: VERT. 1"=50'
HORIZ. 1"=50'
DATE: 1/6/2006

DRAWN BY
CHECKED BY

PLOT DATE = 1/6/2006
FILE NAME = c:\projects\62745\134482\ah_drain.dgn
USER NAME = 58080866 / JLN
USER NAME = crvtrng