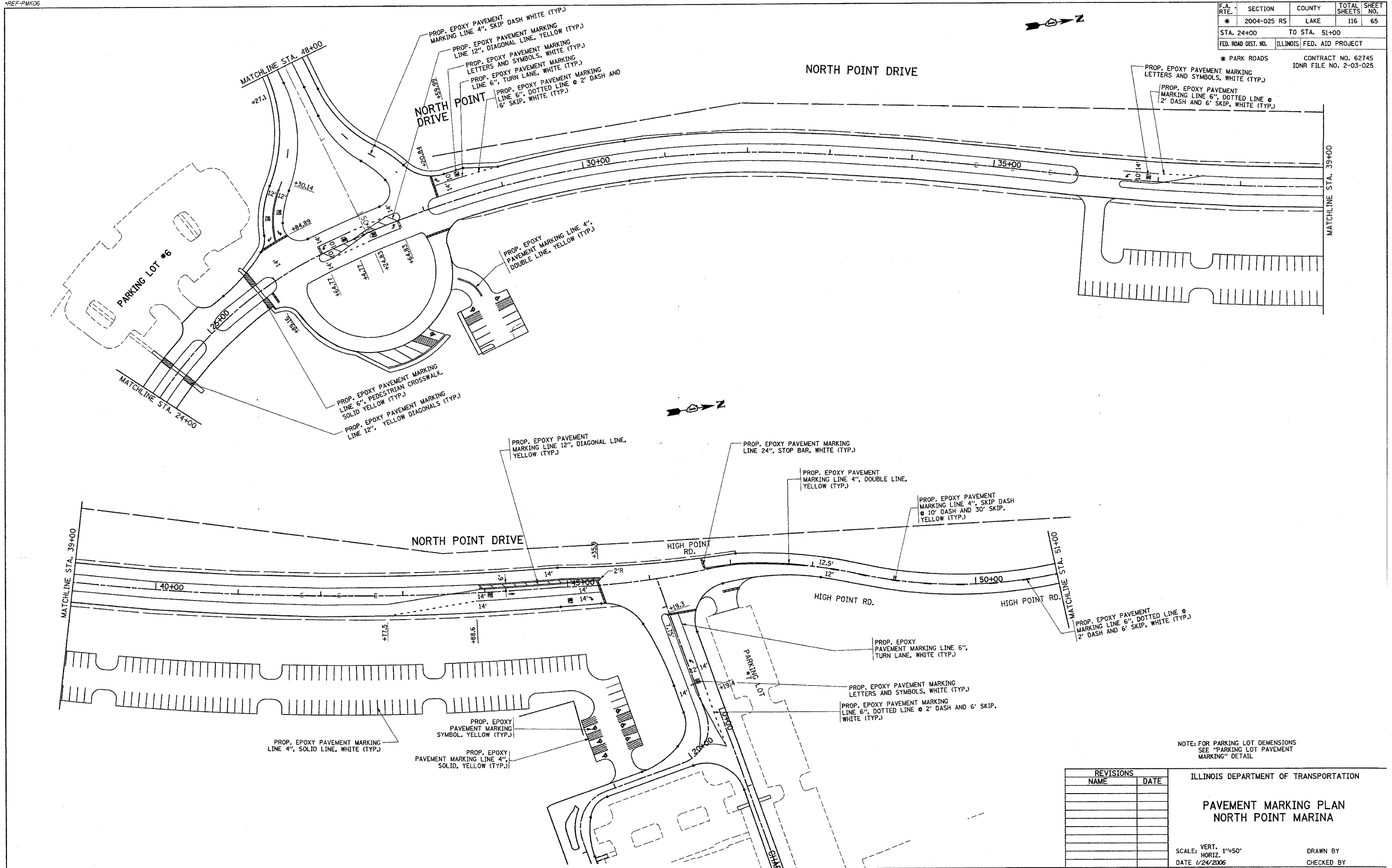


*REF-PMK05
*REF-PMK06

F.A. RTE.	SECTION	COUNTY	TOTAL SHEETS	SHEET NO.
#	2004-025 RS	LAKE	116	65
STA. 24+00		TO STA. 51+00		
FED. ROAD DIST. NO.	ILLINOIS	FED. AID PROJECT		

* PARK ROADS CONTRACT NO. 62745
IDNR FILE NO. 2-03-025



NOTE: FOR PARKING LOT DEMENSIONS SEE "PARKING LOT PAVEMENT MARKING" DETAIL

REVISIONS	
NAME	DATE

ILLINOIS DEPARTMENT OF TRANSPORTATION
**PAVEMENT MARKING PLAN
NORTH POINT MARINA**

SCALE: VERT. 1"=50'
HORIZ. 1"=50'
DATE 1/24/2006

DRAWN BY
CHECKED BY