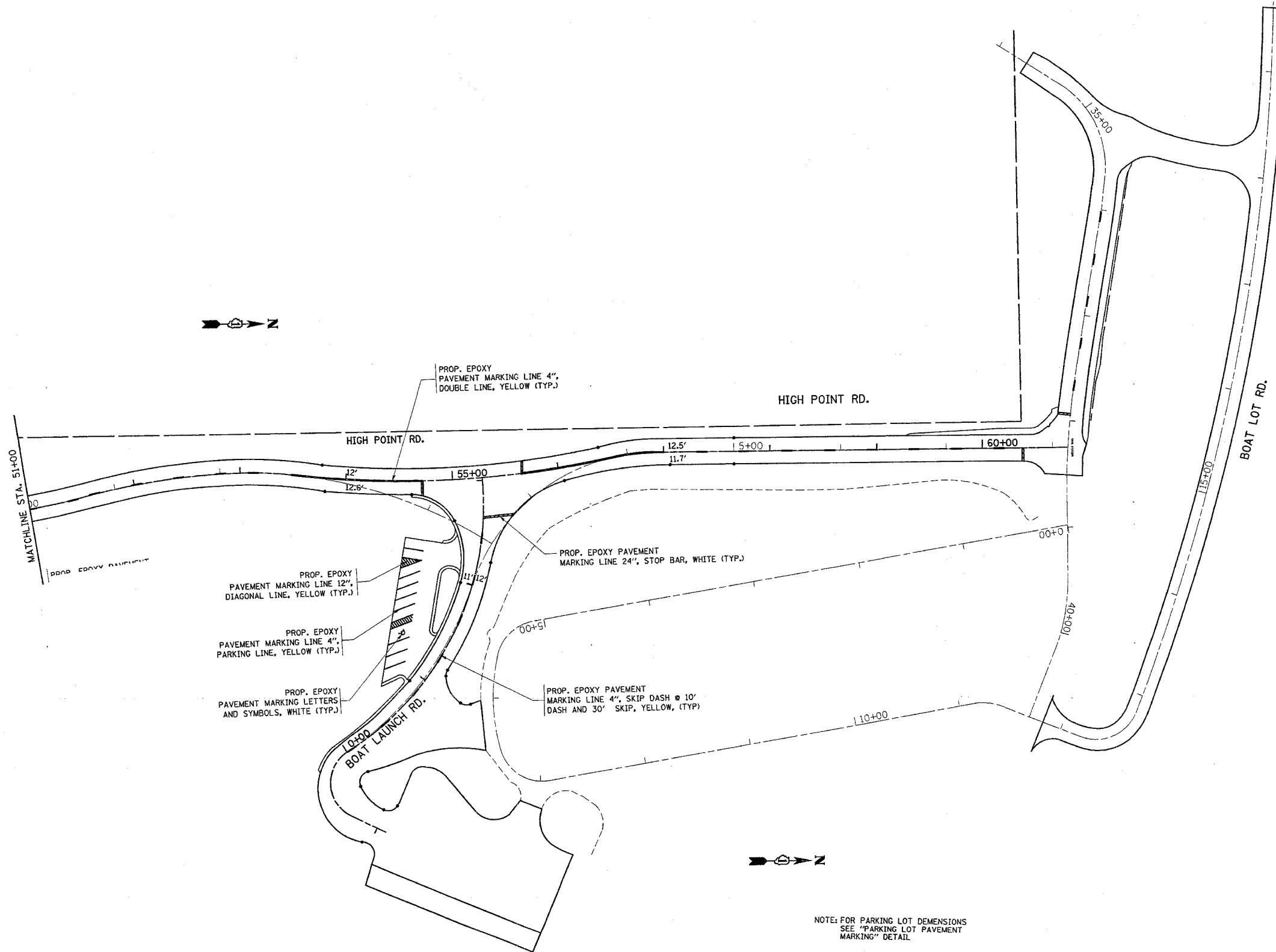


REF-PMK07

F.A. RTE.	SECTION	COUNTY	TOTAL SHEETS	SHEET NO.
*	2004-025 RS	LAKE	116	67
STA. 51+00		TO STA. 60+80		
FED. ROAD DIST. NO.	ILLINOIS FED. AID PROJECT			
* PARK ROADS		CONTRACT NO. 62745		
IDNR FILE NO. 2-03-025				



NOTE: FOR PARKING LOT DEMENSIONS SEE "PARKING LOT PAVEMENT MARKING" DETAIL

REVISIONS	
NAME	DATE

ILLINOIS DEPARTMENT OF TRANSPORTATION
PAVEMENT MARKING PLAN
 NORTH POINT MARINA
 HIGH POINT RD., BOAT LAUNCH RD.
 & BOAT LOT ROAD

SCALE: VERT. 1"=50'
 HORIZ. 1"=50'
 DATE 1/5/2006
 DRAWN BY
 CHECKED BY