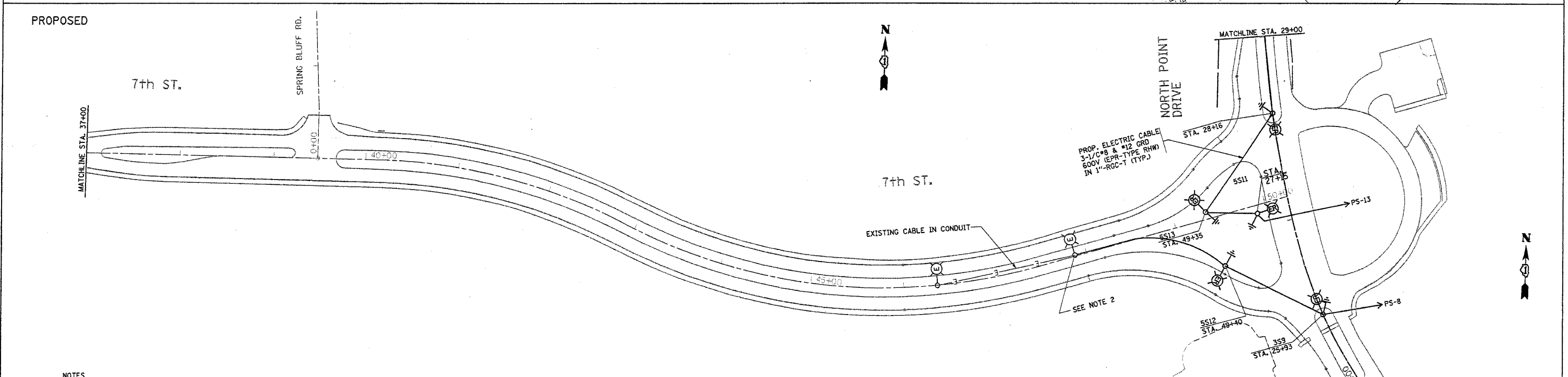
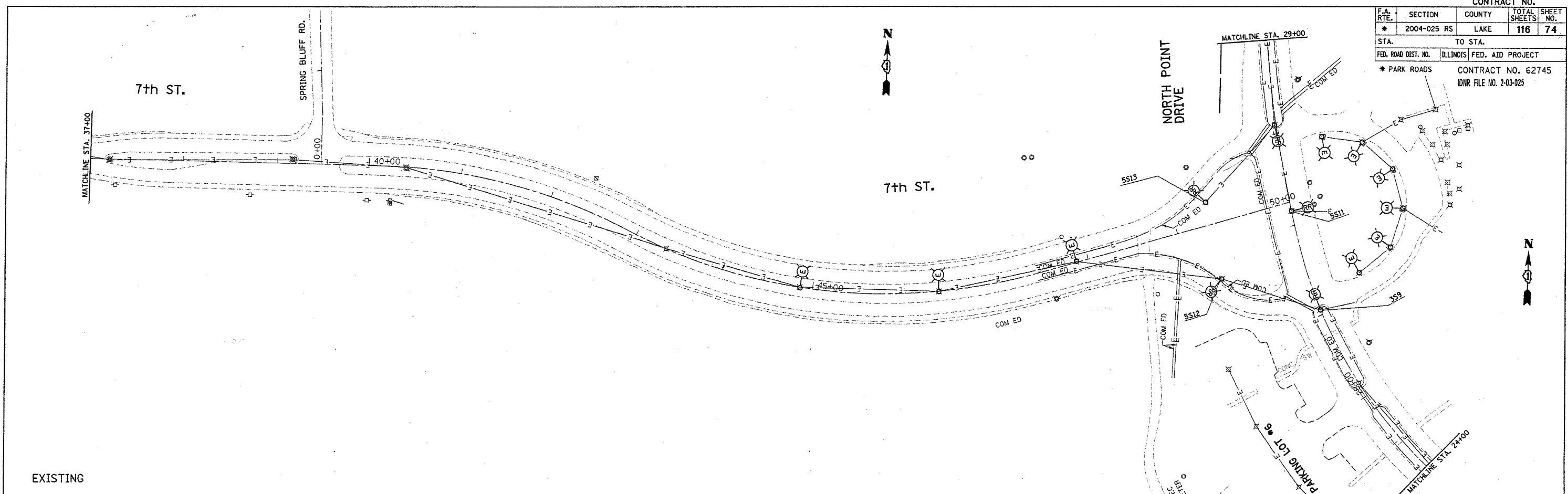


CONTRACT NO.			
F.A. RTE.	SECTION	COUNTY	TOTAL SHEET NO.
* 2004-025 RS	LAKE	116	74
STA.	TO STA.		
FED. ROAD DIST. NO.	ILLINOIS FED. AID PROJECT		
* PARK ROADS	CONTRACT NO. 62745		
	IDNR FILE NO. 2-03-025		



PROP. ELECTRIC CABLE
3-1/2"Ø & #12 GRD
600V (EPR-TYPE RHW)
IN 1"-RGC-T (TYP.)

EXISTING CABLE IN CONDUIT

SEE NOTE 2

NOTES

1. ALL RELOCATED LIGHT POLES SHALL HAVE A MINIMUM SETBACK OF 6 FEET FROM PROPOSED EDGE OF TRAVELED PAVEMENT, OR BACK OF CURB.
2. CONTRACTOR TO SPLICE THE NEW CABLES IN THE LIGHT POLE HANDHOLE.
3. THE EXISTING CABLE/CONDUCTORS AND CONDUIT SHALL BE DISCONNECTED AND REMOVED. THE COST FOR THIS WORK SHALL BE INCLUDED IN THE 1"-RGC IN TRENCH PAY ITEM.

REVISIONS	
NAME	DATE
REVISED	01/09/06

ILLINOIS DEPARTMENT OF TRANSPORTATION

**NORTH POINT MARINA
7TH STREET
EXISTING AND PROPOSED
LIGHTING PLANS**

SCALE: VERT. DRAWN BY
DATE HORIZ. CHECKED BY

PLOT DATE = 1/9/2006
FILE NAME = s:\projects\p134482\ah_lighting.dgn
PLOT SCALE = 1/8"=1'-0"
USER NAME = ahvaldogn