

DISTRICT ONE - DESIGN
PLAN PREPARATION ENGINEER JOHN FORTMANN / RUSS SINHA (847) 705-4209 / ATTENTION MARK V. TINIAKOS (847) 705-4266

REF.
REF.
REF.

SHEET 51 OF 56

F.A.P. RTE.	SECTION	COUNTY	TOTAL SHEETS	SHEET NO.
2004-025 RS	LAKE	ILLINOIS	116	81
FED. ROAD DIST. NO. 1			FED. AID PROJECT	
PARK ROADS			CONTRACT NO. 62745	
I.D.N.R. FILE NO. 2-03-025			D91-191-04	

TOTAL - BILL OF MATERIALS

ITEM	UNIT	QUANTITY
REMOVAL OF EXISTING RIPRAP	SQ. YD.	232
GUARDRAIL REMOVAL	FOOT	26
FENCE TO BE REMOVED AND RE-ERECTED	FOOT	66
STRUCTURE EXCAVATION	CU. YD.	31
CONCRETE HEADWALL REMOVAL	EACH	1
TEMPORARY SOIL RETENTION SYSTEM	SQ. FT.	500
STORM SEWER REMOVAL 42"	FOOT	3'-0"
STORM SEWER REMOVAL 36"	FOOT	4'-0"
COARSE AGGREGATE	TONS	24
CONCRETE STRUCTURES	CU. YD.	28
REINFORCEMENT BARS, EPOXY COATED	POUND	2620
STORM SEWER, CLASS A, TYPE 1, 36"	FOOT	16
STORM SEWER, CLASS A, TYPE 1, 42"	FOOT	16
JOINT FILLING	FOOT	52
TRENCH BACK FILL	CU. YD.	58
TOP SOIL FURNISH AND PLACE, 4" (SPECIAL)	SQ. YD.	85
SEEDING, CLASS 4A (MODIFIED)	ACRES	0.02
GRANULAR BACK FILL	TONS	137
REMOVE EXISTING FLARED END SECTION	EACH	1
CAST IRON STEPS	EACH	4
EPOXY PAVEMENT MARKING - LINE 4	FOOT	40
SKIRTED STEEL GRATING COVER	EACH	1
SAW CUTS	FOOT	60
PAVEMENT REMOVAL	SQ. YD.	21
BITUMINOUS CONCRETE SURFACE COURSE, SUPERPAVE, MIX D, N50, 1 1/2"	TONS	1.5
GEOTECHNICAL FABRIC	SQ. YD.	21
AGGREGATE SUBGRADE, 12"	SQ. YD.	21
BITUMINOUS BASE COURSE, SUPERPAVE 7 1/2"	SQ. YD.	5
BITUMINOUS CONCRETE BINDER COURSE, SUPERPAVE IL 19.0, N50, 1 1/2"	TONS	1.5

SCOPE OF WORK

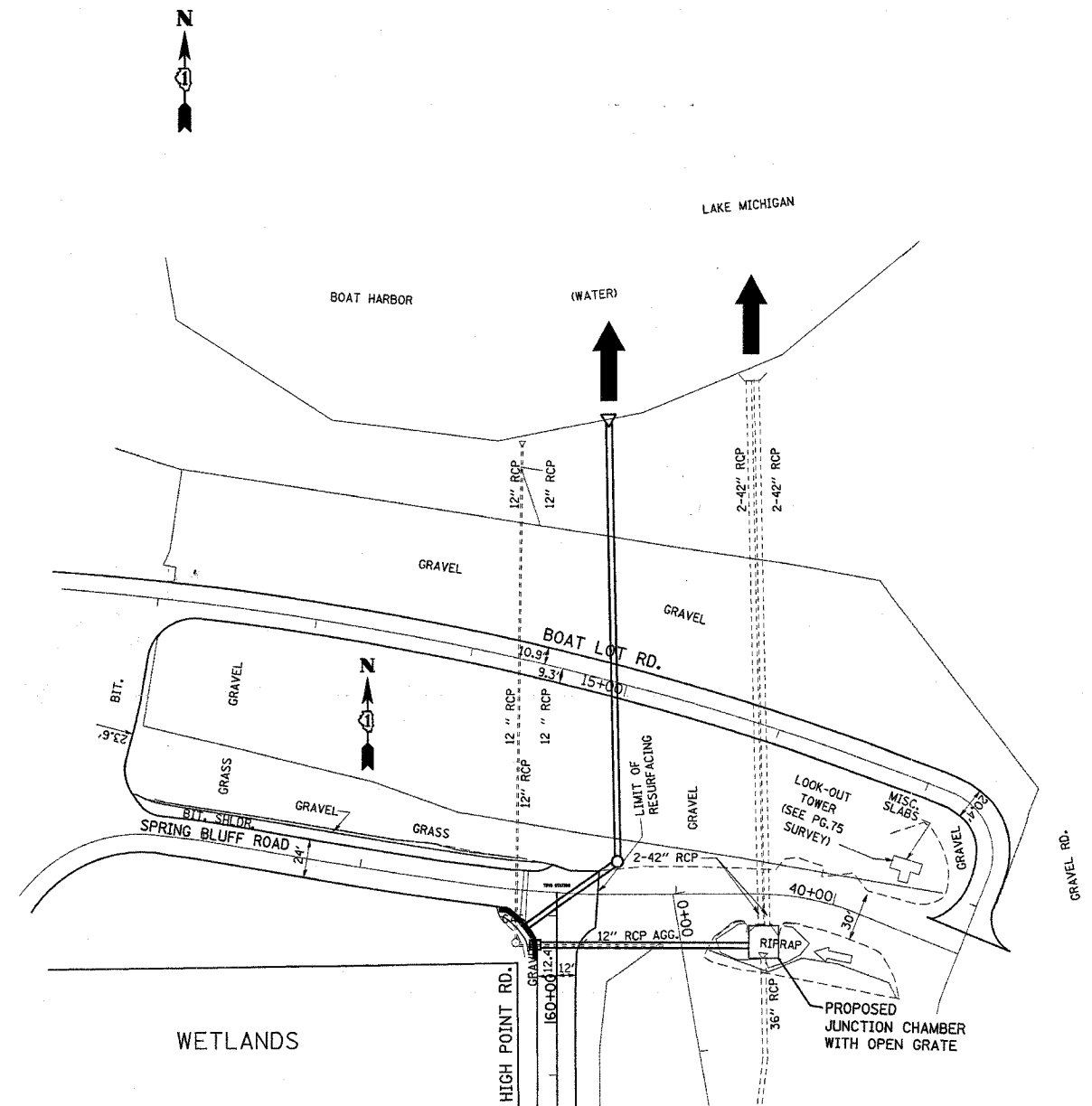
REMOVE EXISTING RIPRAP.
 REMOVE EXISTING GUARDRAIL, ITS POSTS AND END SECTIONS.
 REMOVE EXISTING FENCE AND RE-ERECT IT AFTER THE CONSTRUCTION OF JUNCTION CHAMBER.
 REMOVE EXISTING HEADWALL.
 PERFORM STRUCTURAL EXCAVATION FOR THE JUNCTION CHAMBER.
 CONSTRUCT JUNCTION CHAMBER AS SHOWN.
 SAW CUT PAVEMENTS AS SHOWN ON THE SPRING BLUFF ROAD AND ON THE SOUTH PARKING LOT.
 EXCAVATE TRENCHES TO REMOVE 1'-1 1/2" SECTION OF TWIN 42" PIPE ON THE NORTH SIDE OF EXISTING DRAINAGE DITCH AND TO REMOVE ONE 36" FLARED SECTION AND A 3'-1 1/2" SECTION OF 36" PIPE ON THE SOUTH SIDE OF THE PARKING LOT.
 INSTALL 8'-0" SECTION OF TWIN 42" PIPE AND 16'-0" SECTION OF 36" PIPE AS SHOWN ON PLANS AND PERFORM JOINT FILLING BETWEEN THE PIPES AND THE WALLS OF JUNCTION CHAMBER.
 PERFORM TRENCH FILLING AROUND AND OVER THE PIPES AND AROUND AND OVER THE JUNCTION CHAMBER.
 INSTALL TOP SOIL AS SHOWN.
 INSTALL SEEDING, CLASS 4A (MODIFIED)
 RESTORE THE SITE TO ITS ORIGINAL CONDITION AS FAR AS PRACTICABLE.

STRUCTURAL NOTES:

ALL GRATINGS SHALL BE MANUFACTURED FROM ASTM A36 STEEL AND BE HOT DIPPED GALVANIZED IN ACCORDANCE WITH ASTM A123.
 GRATING FOR COVER AT TOP OF JUNCTION CHAMBER SHALL HAVE BEARING BARS 3/2" DEEP BY 3/8" THICK, SPACED AT 1 3/8" CENTERS. CROSS BARS SHALL BE 1" DEEP BY 3/8" THICK, SPACED AT 4" CENTERS AND WELDED. CROSS BARS SHALL BE FLUSH WITH TOP OF GRATING.
 THE GRATING SHALL BE SUPPLIED WITH FULL DEPTH SKIRT BANDING BAR 6 1/2" DEEP BY 1/2" THICK, WELDED TO BEARING BARS AS SHOWN ON THE DRAWINGS.
 GRATING CLEARANCE BETWEEN JUNCTION CHAMBER WALL AND SKIRT BANDING BAR SHALL BE 1/2" UNLESS NOTED OTHERWISE.
 THE ACCESS COVER ON GRATING SHALL BE NEENAH R-1912-D OR ITS EQUIVALENT.
 FIELD WELDING SHALL BE PERMITTED ONLY WHEN APPROVED BY THE ENGINEER.

GENERAL NOTES:

PLAN DIMENSIONS AND DETAILS RELATIVE TO EXISTING STRUCTURE HAVE BEEN TAKEN FROM EXISTING PLANS AND ARE SUBJECT TO NOMINAL CONSTRUCTION VARIATIONS. IT SHALL BE THE CONTRACTOR'S RESPONSIBILITY TO VERIFY SUCH DIMENSIONS AND DETAILS IN THE FIELD AND MAKE NECESSARY APPROVED ADJUSTMENTS PRIOR TO CONSTRUCTION OR ORDERING OF MATERIALS. SUCH VARIATIONS SHALL NOT BE CAUSE FOR ADDITIONAL COMPENSATION FOR A CHANGE IN THE SCOPE OF THE WORK. HOWEVER, THE CONTRACTOR WILL BE PAID FOR THE QUANTITY ACTUALLY FURNISHED AT THE UNIT PRICE FOR THE WORK.
 REINFORCEMENT BARS SHALL CONFORM TO THE REQUIREMENTS OF AASHTO M31, OR M322 GRADE 400.
 ALL CONSTRUCTION JOINTS SHALL BE BONDED.
 CLEAR COVER SHALL BE 1 1/2" EXCEPT AS NOTED.
 DURING THE JUNCTION CHAMBER CONSTRUCTION THE CONTRACTOR MAY ENCOUNTER HIGH WATER TABLE AND WATER-BEARING STRATA.
 CONTRACTOR SHALL NOT ENCROACH INTO THE WETLAND AREA AND SHALL CONFINE ALL WORK TO EXISTING ROADWAY, SHOULDERS NEAR THE WETLAND.
 DO NOT SCALE DIMENSIONS.



GENERAL PLAN

REVISIONS		ILLINOIS DEPARTMENT OF TRANSPORTATION
NAME	DATE	
		ILLINOIS BEACH STATE PARK (NORTH POINT MARINA) GENERAL NOTES AND GENERAL PLAN

SCALE: VERT. NONE
 DATE: JANUARY, 2006
 DRAWN BY: MVT
 CHECKED BY: RSS