

DISTRICT ONE - DESIGN  
 PLAN PREPARATION ENGINEER JOHN FORTMANN / RUSS SINHA (847) 705-4209 / ATTENTION MARK V. TINIAKOS (847) 705-4266

SHEET S3 OF S6

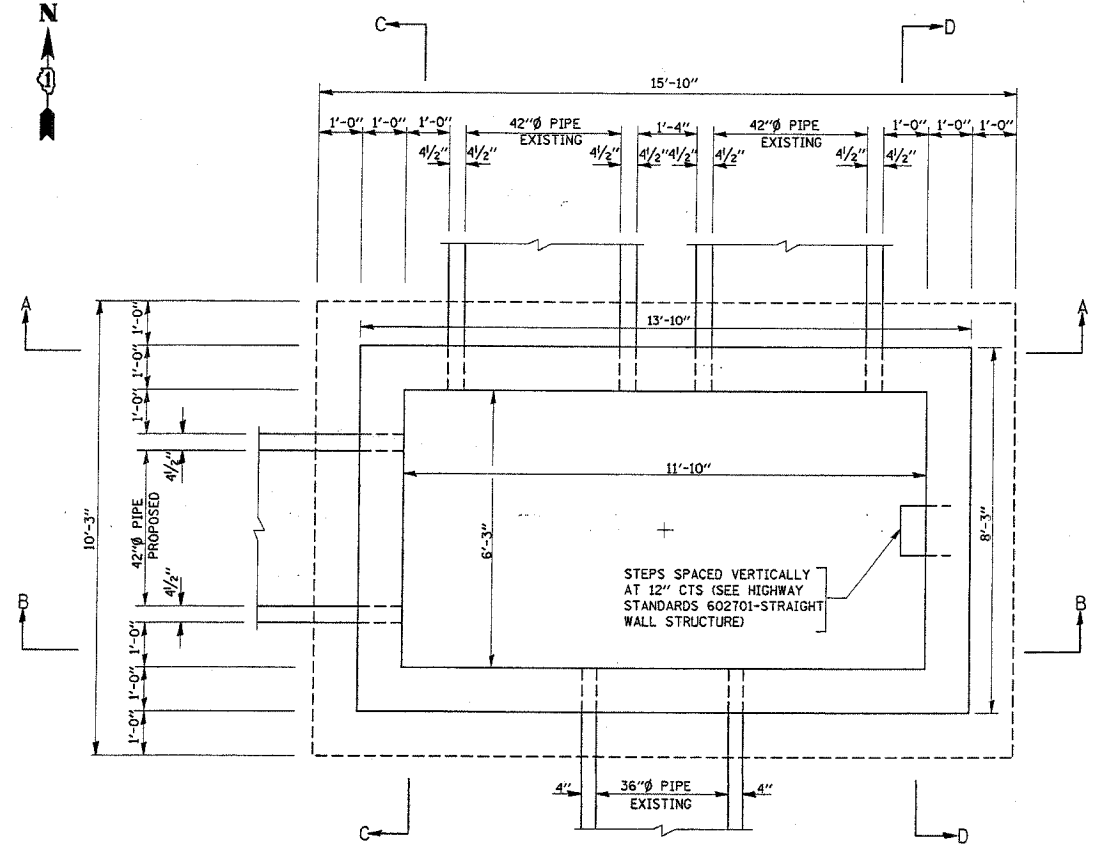
F.A.P. RTE.	SECTION	COUNTY	TOTAL SHEETS	SHEET NO.
*	2004-025 RS	LAKE	116	83
FED. ROAD DIST. NO. 1 ILLINOIS			FED. AID PROJECT	

\* PARK ROADS  
 I.D.N.R. FILE NO.2-03-025  
 091-191-04

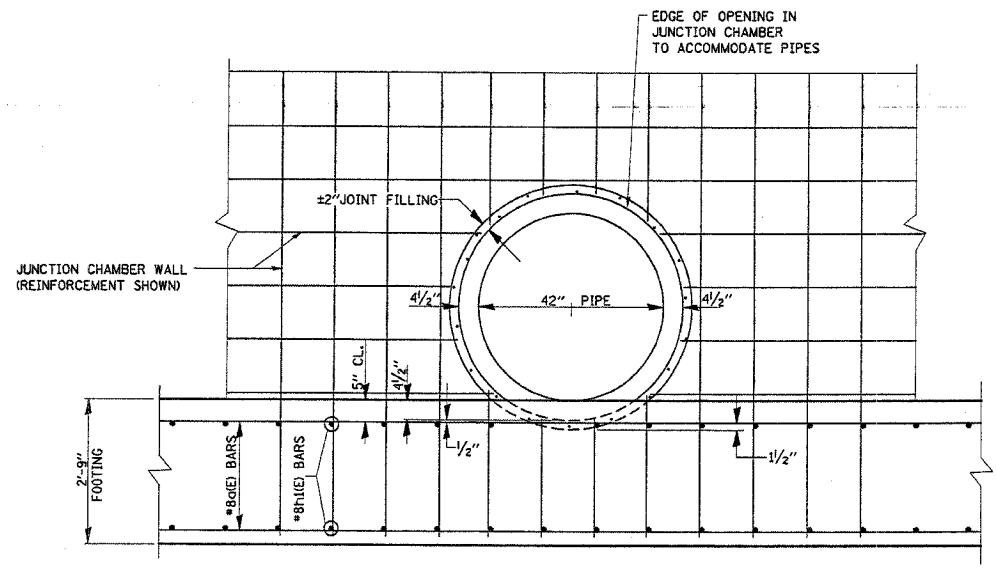
CONTRACT NO. 02745

**BILL OF MATERIALS**

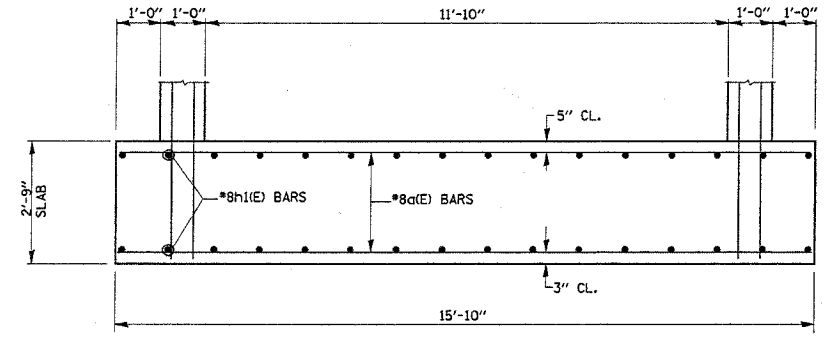
BAR	NO.	SIZE	LENGTH	SHAPE
a(E)	22	#8	15'-7"	—
h(E)	12	#4	8'-0"	—
h1(E)	34	#8	10'-0"	—
h2(E)	16	#4	13'-7"	—
s(E)	16	#3	4'-11"	□
s2(E)	4	#3	3'-3"	□
u1(E)	8	#4	5'-0 3/4"	⌒
u2(E)	24	#4	5'-4 3/4"	⌒
v(E)	86	#4	7'-6"	—
REINFORCEMENT BARS, EPOXY COATED			POUND	2620
CONCRETE STRUCTURES			CU.YD.	28
CAST IRON STEPS			EACH	4



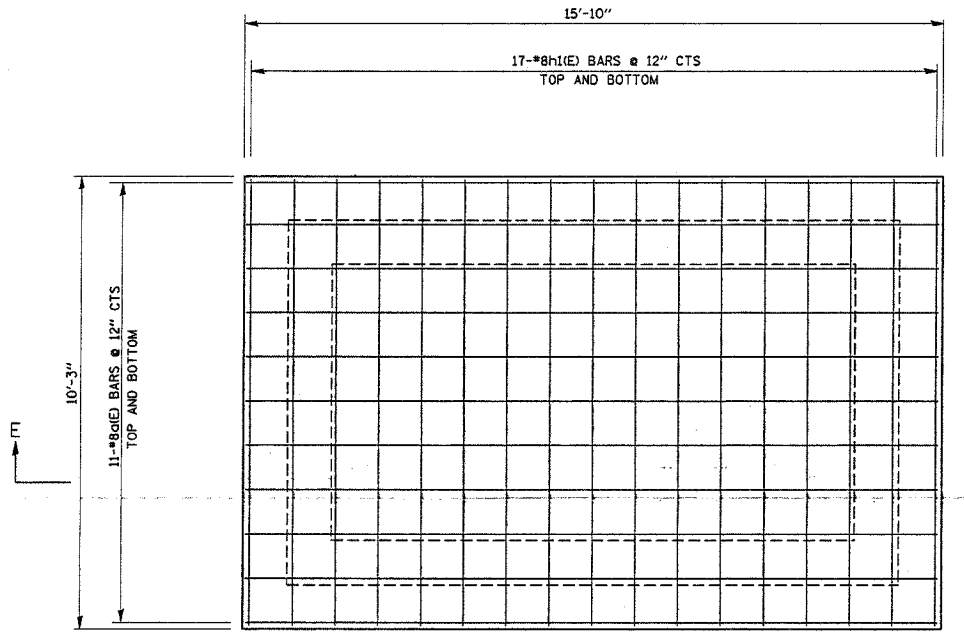
**GENERAL PLAN  
 JUNCTION CHAMBER**



**TYPICAL DETAIL JOINT FILLING**



**SECTION E-E  
 (SHOWING DETAILS OF BOTTOM SLAB REINFORCEMENT)**



**PLAN BOTTOM SLAB**

REVISIONS	
NAME	DATE

ILLINOIS DEPARTMENT OF TRANSPORTATION

ILLINOIS BEACH STATE PARK  
 (NORTH POINT MARINA)  
 JUNCTION CHAMBER  
 PLAN ELEVATIONS AND DETAIL

SCALE: VERT. NONE  
 HORIZ. NONE  
 DATE: NOVEMBER, 2005

DRAWN BY: MVT  
 CHECKED BY: RSS