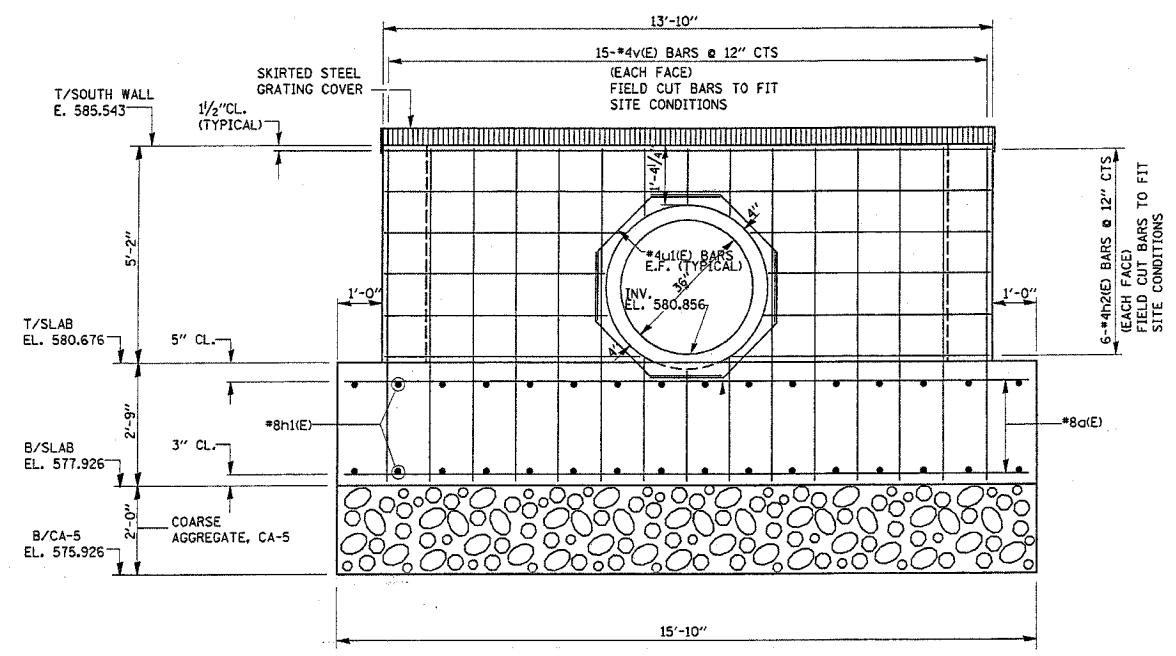


REF-
REF-
REF-

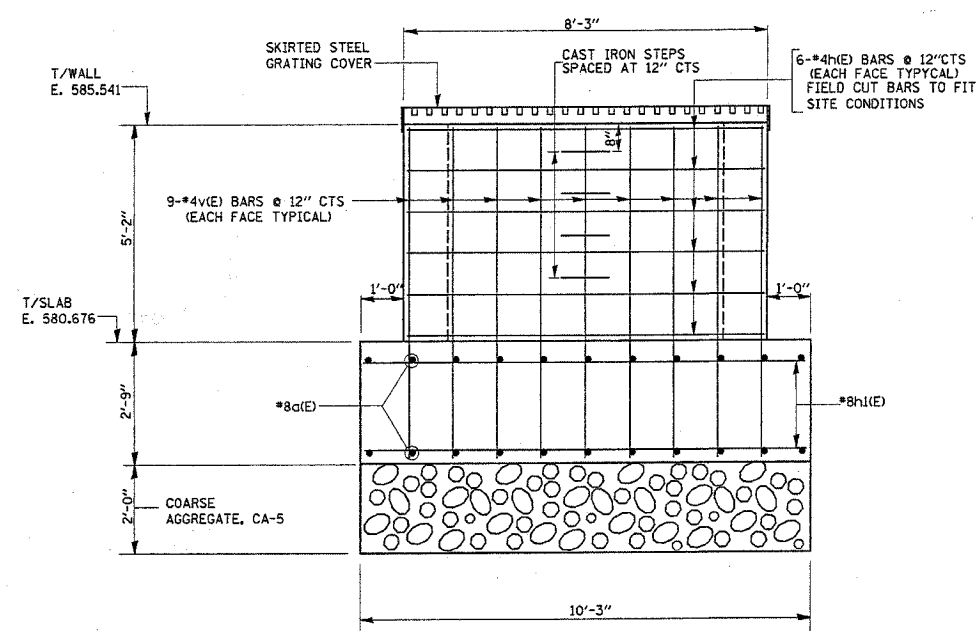
SHEET S4 OF S6

F.A.P. RTE.	SECTION	COUNTY	TOTAL SHEETS	SHEET NO.
2004-025 RS	LAKE	ILLINOIS	116	84
FED. ROAD DIST. NO. 1 ILLINOIS FED. AID PROJECT				
PARK ROADS CONTRACT NO. 62745				
IDNR FILE NO. 2-03-025				

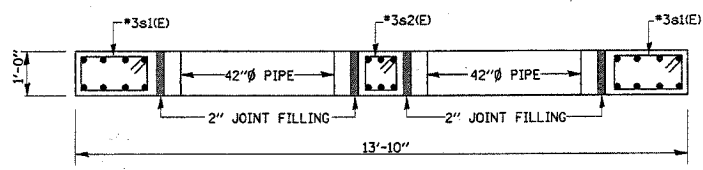
DISTRICT ONE - DESIGN
PLAN PREPARATION ENGINEER JOHN FORTMANN / RUSS SINHA (847) 705-4209 / ATTENTION MARK V. TINIAKOS (847) 705-4266



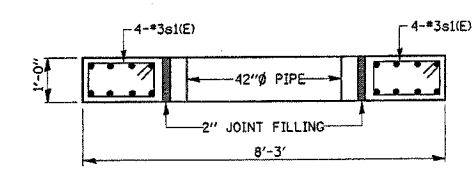
SECTION B-B
(ELEVATION SOUTH WALL)



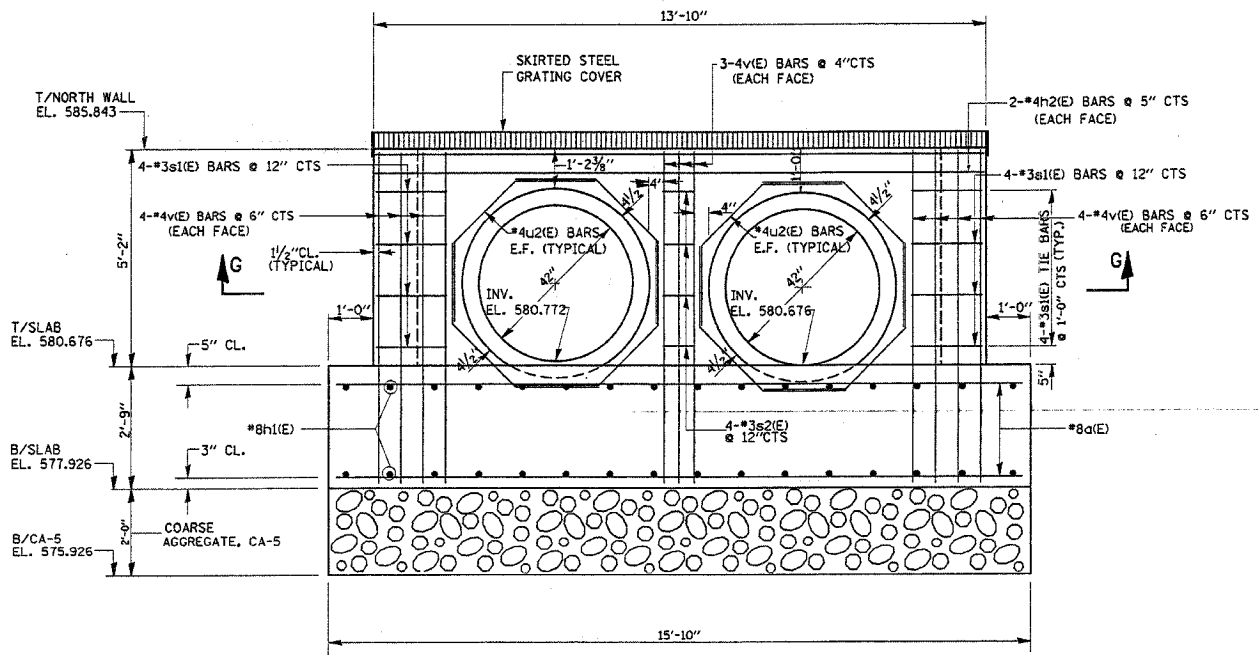
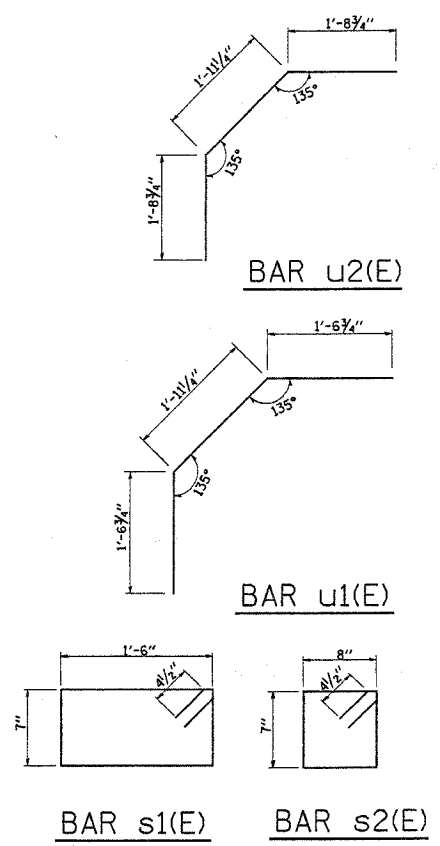
SECTION D-D
(ELEVATION EAST WALL)



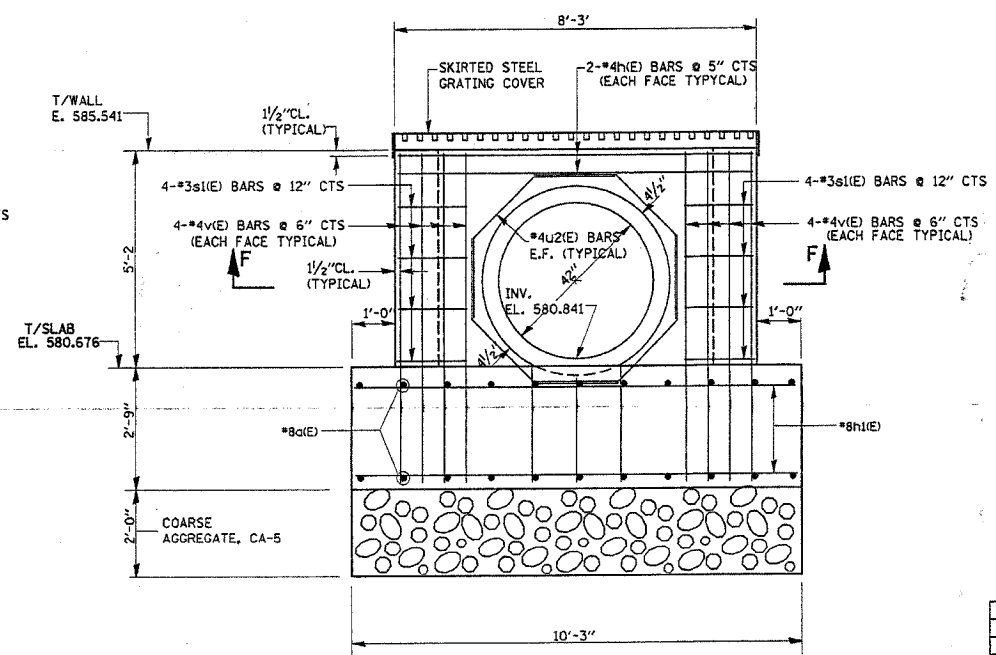
SECTION G-G



SECTION F-F



SECTION A-A
(ELEVATION NORTH WALL)



SECTION C-C
(ELEVATION WEST WALL)

REVISIONS	
NAME	DATE

ILLINOIS DEPARTMENT OF TRANSPORTATION
ILLINOIS BEACH STATE PARK
(NORTH POINT MARINA)
JUNCTION CHAMBER
PLAN AND ELEVATIONS
SCALE: VERT. NONE
HORIZ. DATE: NOVEMBER, 2005
DRAWN BY: MVT
CHECKED BY: RSS