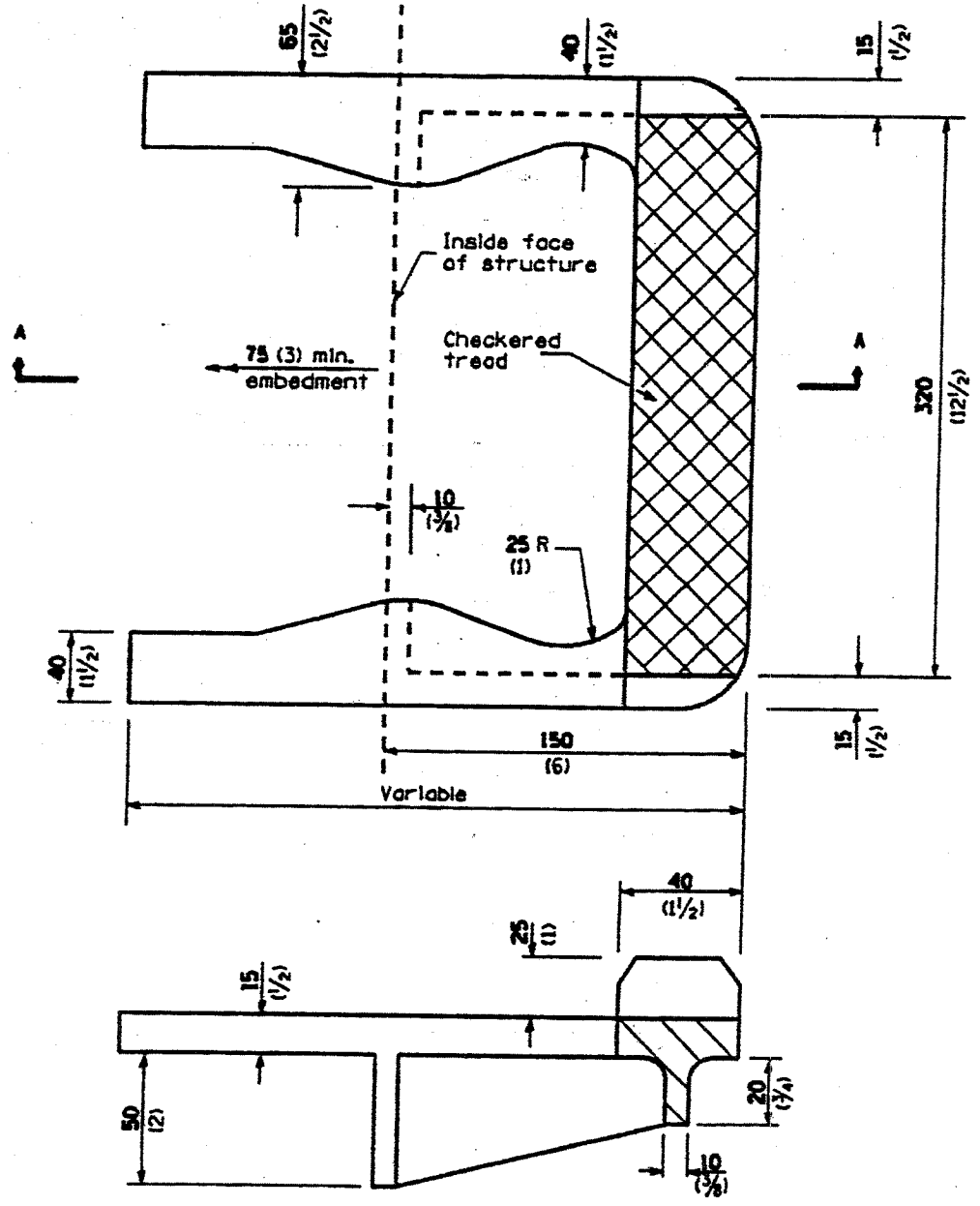


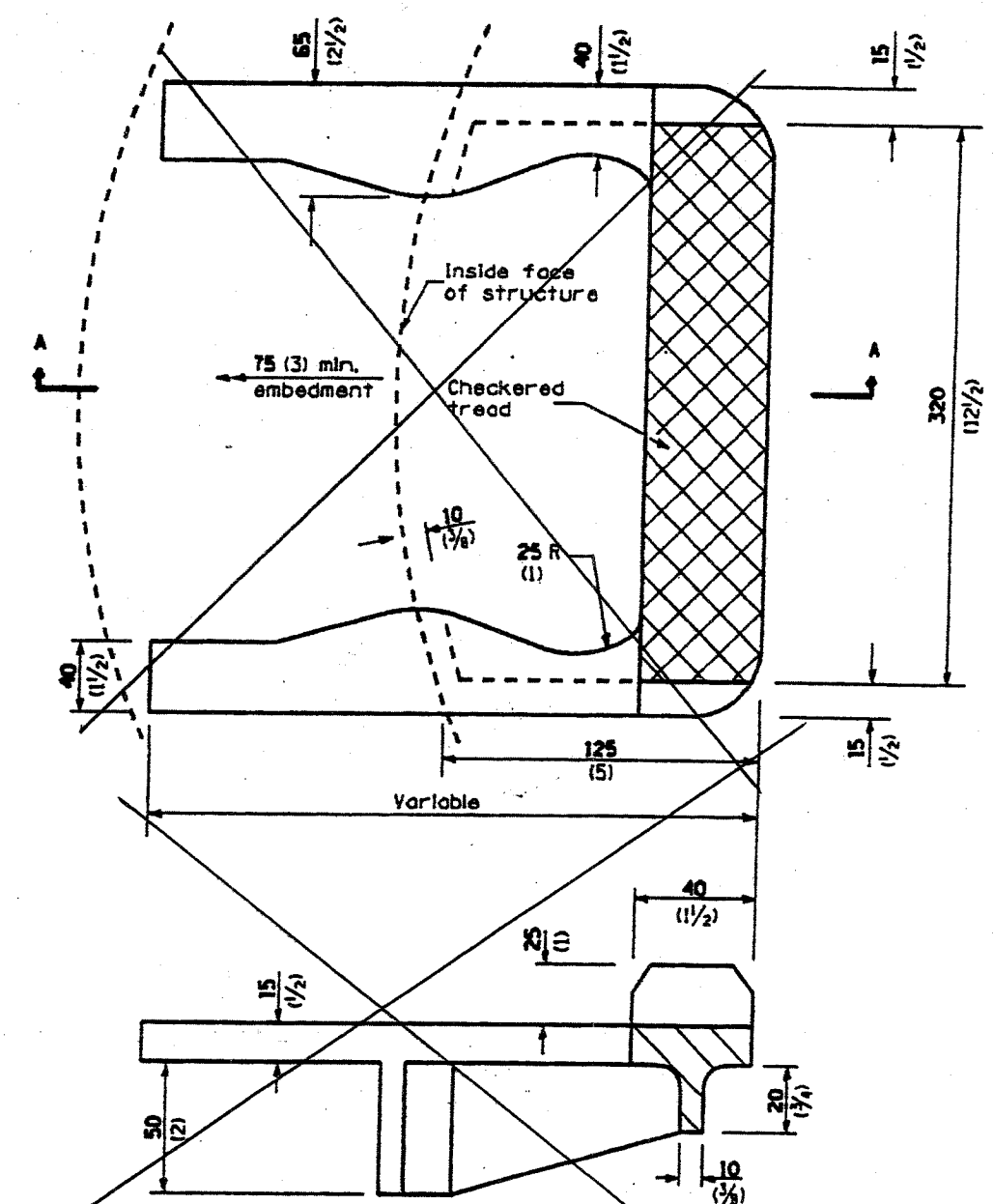
DISTRICT ONE - DESIGN
PLAN PREPARATION ENGINEER JOHN FORTMANN / RUSS SINHA (847) 705-4209 / ATTENTION MARK V. TINIAKOS (847) 705-4266

SHEET 56 OF 56

F.A.P. RTE.	SECTION	COUNTY	TOTAL SHEETS	SHEET NO.
•	2004-025 RS	LAKE	116	86
FED. ROAD DIST. NO. 1 ILLINOIS FED. AID PROJECT				
• PARK ROADS I.D.N.R. FILE NO.2-03-025			CONTRACT NO. 62745	
091-191-04				



SECTION A-A
STRAIGHT WALL STRUCTURE



SECTION A-A
CIRCULAR WALL STRUCTURE

ALL DIMENSIONS ARE IN MILLIMETERS AND (INCHES) UNLESS OTHERWISE SHOWN.

REVISIONS	
NAME	DATE

ILLINOIS DEPARTMENT OF TRANSPORTATION
ILLINOIS BEACH STATE PARK
(NORTH POINT MARINA)
CAST IRON STEPS
STANDARD 602701
SCALE: VERT. NONE
 HORIZ. NONE
DATE: NOVEMBER, 2005
DRAWN BY: MVT
CHECKED BY: RSS

10/21/2005
c:\projects\struct18\park_roadserf060.m32
tiniakosmv